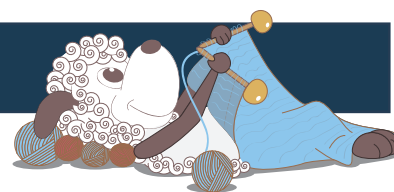


Bella - a cute little dress with dog heads



Design: Charlotte Kaae

This cute little dress with little dog heads on the yoke is part of a baby series with the traditional Faroese Kettunøsin pattern.

2nd English edition - September 2019 © Filcolana A/S
English translation: Signe Strømgaard

Materials

Color A: 100 (150) 150 (200) g Arwetta Classic by Filcolana in color 807 (Boysenberry (melange))
Color B: 30 (50) 80 (100) g Arwetta Classic by Filcolana in color 813 (Strawberry Pink (melange))
Color C: 20 (25) 30 (35) g Arwetta Classic by Filcolana in color 193 (Deep Periwinkle)
1 button
2,5 circular needle, 60 cm
3 mm circular needle, 40 and 60 cm

Sizes

1 year/80 cl (2 years/92 cl) 4 years/104 cl (6 years/116 cl)

Measurements

Body, chest: 50-53 (53-56) 56-59 (59-62) cm
Sweater, chest: 63 (67) 71 (74) cm
Total length: 36 (42) 48 (54) cm

Gauge

28 sts and 32 rows in stockinette stitch on a 3 mm needle = 10 x 10 cm.

Special techniques

Right leaning increase: Work a reverse yarn, then purl the yarn over on the next row.

Left leaning increase: Work a yarn over, then purl the yarn over through the back loop on the next row.

Directions for knitting

The dress is worked from the top down in stockinette stitch. The yoke is worked back and forth in the stranded pattern. Note that the increases lean in different ways, so as not to interfere with the Kettunøsin pattern.

Yoke

Cast on 112 (120) 124 (128) sts on a 2,5 mm needle with color C. Knit 6 rows back and forth. Change to a 3 mm circular needle and work back and forth in the charted pattern for your size.

When all rows of the chart have been worked, there are 280 (300) 310 (320) sts on a needle.

Join in the round and place a marker for the beginning of the round. Knit 2 (6) 8 (10) rounds in color A. Divide the work for sleeves and body:

Knit 40 (43) 45 (47) sts, place the next 60 (64) 65 (66) sts on a stitch holder for the sleeve, cast on 8 (8) 10 (10) new sts in extension of the sts on the needle, knit 80 (86) 90 (94) sts, place the next 60 (64)



65 (66) sts on a stitch holder for the sleeve, cast on 8 (8) 10 (10) new sts in extension of the sts on the needle, work 40 (43) 45 (47) sts.

Skirt

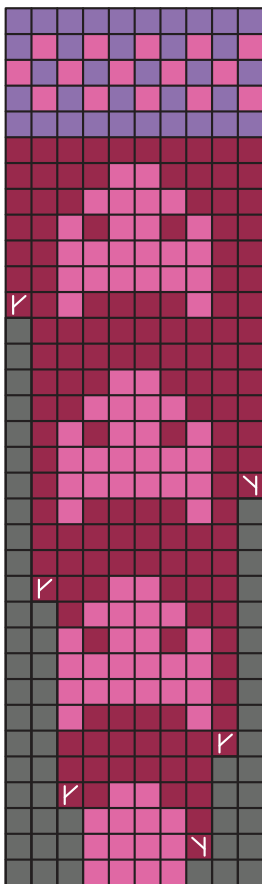
Place a marker between the 2 center stitches of the newly cast on sts under each sleeve. There are now 176 (188) 200 (208) sts.

Continue in color A.

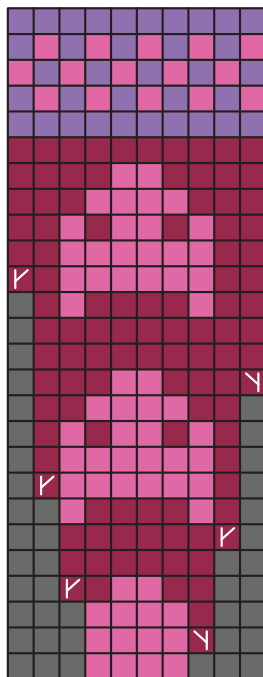
Increase row: *knit to 1 stitch before marker, M1, k1, slip marker, k1, M1*. Repeat from * to * once more, knit to end of round.

Chart

Sizes 4 and 6 years



Sizes 1 and 2 years



- Color C
- Color B
- Color A
- K on the RS, p on the WS
- Right leaning increase
- Left leaning increase
- No stitch

How to read chart

The chart is read from the bottom up and from left to right on RS rows, right to left on WS rows. The pattern is repeated across the row.

Work an increase row every 4. (5.) 6. (7.) rounds a total of 12 times. There are now 224 (236) 248 (256) sts on the needle.

Work straight until the dress measures 35 (41) 47 (53) cm or desired length from the shoulder.

Knit 6 rows back and forth in color C.

Sleeves

Place the 60 (64) 65 (66) sts for one sleeve to a 3 mm circular needle. Work back and forth in color A. Cast on 5 (5) 6 (6) sts at the end of the next 2 rows. There are now 68 (72) 75 (76) sts.

Work 3 (3) 4 (5) cm of stockinette stitch. end on a WS row. Change to a 2,5 mm circular needle and color C. Knit 4 rows, while decreasing sts on the first row as follows:

Knit 2 (2) 2 (4) sts, k sts tog 2 and until the last 2 (2) 3 (4) ts, knit 2 (4) 3 (4) sts. There are now 36 (38) 40 (42) sts.

Bind off loosely.

Finishing

Sew the sleeve seams and the sts under each sleeve. Sew the garter edge at the hem.

Crochet 1-3 button loops at one side of the yoke opening and buttons at the other side, corresponding to the loops.