

filcolana

OBSESSED WITH QUALITY YARN SINCE 1952



Design: Hanne Rimmen
English translation: June Thomsen

Santa Baby

3rd edition - December 2022 © filcolana
#FilcolanaSantaBaby

Santa Baby is the beautiful and feminine Christmas sweater for women who dream of a little extra. “Santa Baby” is a jazzy Christmas song from 1953, sung by Eartha Kitt. The song is a humorous rendition of a wish list for Santa from a woman who desires extravagant gifts such as sable fur coats, yachts, and jewellery from Tiffany’s.

SIZES

S (M) L (XL) 2XL

MEASUREMENTS

Fits chest sizes: 80-88 (88-94) 96-104(104-112)
112-122 cm

Chest: 90 (98) 106 (114) 124 cm

Length (measured on the middle of the back):
approx. 56 (57) 59 (63) 63 cm

Length measured under the sleeve: 29 (31) 33 (35)
35 cm

Sleeve length: 44 (45) 46 (46) 46 cm

GAUGE

20 sts and 28 rounds on 4 mm needles = 10 x 10 cm
Gauge is measured after washing.

Needle sizes are for guidance only. If you have more stitches on 10 cm, change to a larger needle. If you have fewer stitches on 10 cm, change to smaller needles.

Note, that the gauge should be the same for both the plain knit and the pattern knit to achieve the desired result.

MATERIALS

Yarn from Filcolana

Colour A: 250 (250) 300 (350) 400 g **Pernilla** in col. 977 (Marzipan) and 100 (125) 125 (150) 175 g **Tilia** in col. 101 (Natural White)

Colour B: 50 (50) 50 (50) 100 **Pernilla** in col. 346 (Thuja) and 25 (25) 25 (25) 50 g **Alva** in col. 147 (Hunter Green)

Colour C (inside of neckband):

50 g **Pernilla** in col. 810 (Chrysantemum) and 25 g **Alva** in col. 225 (Christmas Red)

Work each colour with 1 strand of each yarn base held together.

3.5 mm circular needles, 80 cm

4 mm circular needles, 40 and 80-100 cm

3.5 mm and 4 mm double pointed needles (dpns) for the sleeves and neckband (dpns can be skipped if you are using the magic loop technique on long needles)

Stitch markers or contrast coloured thread





Techniques

SPECIAL ABBREVIATIONS

M1R - Right slanted increase

From the back, lift the horizontal strand between the two stitches with the left needle and knit through the front loop (1 st increase).

M1L - Left slanted increase

From the front, lift the horizontal strand between stitches with the left needle and knit through the back loop (1 st increase).

Sl1 k1 pss0

Slip 1 st knit-wise, knit 1 stitch, pass the slipped stitch over.

SPECIAL TECHNIQUES

Short rows

Slip 1st st purl-wise with yarn in front onto right needle. Tug the yarn up and over the needle. This creates a double stitch. Continue working the row as instructed in pattern. On next row work the double sts together. This technique is called German short rows.

Italian bind off

Measure a tail approx. 3 times the length of the rib circumference. Thread tail onto a tapestry needle. First st should be a knit st.

1. Insert tapestry needle into the first st on left needle as if to purl, pull the yarn through.
2. From behind work insert needle between 1st and 2nd st. Pull needle and yarn to front of work.
3. Insert tapestry needle through the 2nd st, from front and out on the back.
4. Insert tapestry needle from front into the 1st st as if to knit it, slip st off needle.
5. From the front insert tapestry needle - from right to left - into the front leg of the 2nd st (knit st), pull yarn through.
6. Insert tapestry needle into 1st st as if to purl, slip st off needle.

Repeat steps 2-6 until you bound off all sts. Weave in end, carefully.

CHART

See page 4.

Workflow

Work the blouse from top down, each colour is worked using one strand of each yarn base held together.

Begin with short rows in the neck and then work the yoke according to chart.

For the 3 largest sizes work raglan increases, before work is divided into body and sleeves.

The various parts are finished separately, the body is knitted in the desired length and bound off with Italian bind off.

Then work the sleeves to desired length and finish with a ribbing edge and Italian bind off.

Finally, pick up sts along the neckline using the contrast colour so the inside of the neckband is decorated with this contrast colour. Sew the neckband.





Pattern

YOKE

With 4 mm needles and colour A and one string of each base held together, cast on 88 (92) 96 (100) 104 sts. Join round and place a start marker (middle of the back).

Knit 2 rounds.

Work short rows back and forth to heighten the neck (see Special techniques), like this:

1st short row (RS): K6, turn work.

2nd short row (WS): Work a short row, p11, turn work.

3rd short row: Work a short row, knit to, and include the short row from previous row, k8, turn work.

4th short row: Work a short row, purl to, and include the short row from previous row, p8, turn work.

Repeat rows 3 and 4 another 4 times.

Last short row (RS): Work a short row, knit to start marker.

The short rows are now done, now continue work in the round.

Knit 55 rounds in pattern and with increases as indicated in the chart = 264 (276) 288 (300) 312 sts.

Only size M

Knit 3 rounds of stockinette.

Only sizes S and M

Remove beginning of round marker

Next round: Knit 41 (43) sts (right side of the back), place marker, knit 50 (52) sts (right sleeve), place marker, knit 82 (86) sts (front), place marker, knit 50 (52) sts (left sleeve), place start marker, knit 41 (43) sts (left side of back).

Only sizes L, XL, and 2XL

Knit 1 round of stockinette.

Remove beginning of round marker

Next round: Knit 45 (48) 51 sts (right side of the back), place marker, knit 54 (54) 54 sts (right sleeve), place marker, knit 90 (96) 102 sts (front), place

marker, knit 54 (54) 54 sts (left sleeve), place start marker, knit 45 (48) 51 sts (left side of the back).

Now work raglan increases like this:

Next round (increase round): Knit to start marker, slip marker to right needle, *k1, M1L, knit to 1 st before next marker, M1R, k1, slip marker to right needle*, repeat from * to * over entire round.

Next round: Knit entire round.

Work these 2 rounds a total of 2 (3) 4 times, finish with a round without increases.

All sizes

BODY

Knit to next marker, remove marker and place sleeve sts to next marker on a stitch holder, cast on 5 (6) 6 (6) 7 sts (split the 2 strands and cast on sts with long-tail cast-on), place a side marker, cast on another 5 (6) 6 (6) 7 sts, remove marker, repeat from * to * once more = 184 (196) 212 (228) 248 sts.

The round now starts at the side marker under the left sleeve.

Knit stockinette until the body measures 24 (26) 28 (28) 29 cm from the armhole.





Change to 3.5 mm circular needles.

Rib

Knit 3.5 (3.5) 3.5 (4.5) 4.5 cm twisted rib (k1 tbl, p1).

Break yarn and change to colour B.

Knit all sts tbl.

Next round: Work (k1 tbl, p1) over all sts.

Bind off with Italian bind off (see Special techniques).

SLEEVES

Slip the 50 (52) 58 (60) 62 sleeve sts on the 4 mm needles. Join colour A to the right side of the armhole and pick up 5 (6) 6 (6) 7 sts from the middle of the armhole to the resting sts, knit the resting sts and then pick up 5 (6) 6 (6) 7 sts from the middle of the armhole, place a start marker = 60 (64) 70 (72) 76 sts.

Knit 12 rounds of stockinette.

Next round (decrease round): K1, k2tog, knit to last 3 sts, sl1 k1 pss0, k1.

Repeat this decrease round on every 12th (9th) 9th (9th) 9th round, a total of 6 (6) 8 (8) 9 times = 48 (52) 54 (56) 58 sts.

Continue in stockinette until sleeve measures 39 (40) 40 (39) 39 cm from the armhole.

Change to 3.5 mm needles.

Work 3.5 (3.5) 3.5 (4.5) 4.5 cm twisted rib (k1 tbl, p1).

Break yarn and change to colour B.

Knit all sts tbl.

Next round: Work (k1 tbl, p1) over all sts.

Bind off with Italian bind off as on the body.

NECKLINE

Start at the middle of the back and with 3.5 mm needles and main colour, pick up 88 (92) 96 (100) 104 sts along the right side of the neckline.

Purl 1 round and knit 1 round.

Work twisted rib (k1 tbl, p1) till neckband measures 4 cm.

Purl 1 round (folding round).

Work rib for another 1.5 cm.
Break yarn and change to colour C.

Work another 2.5 cm in rib.

Bind off loosely as pattern indicates.

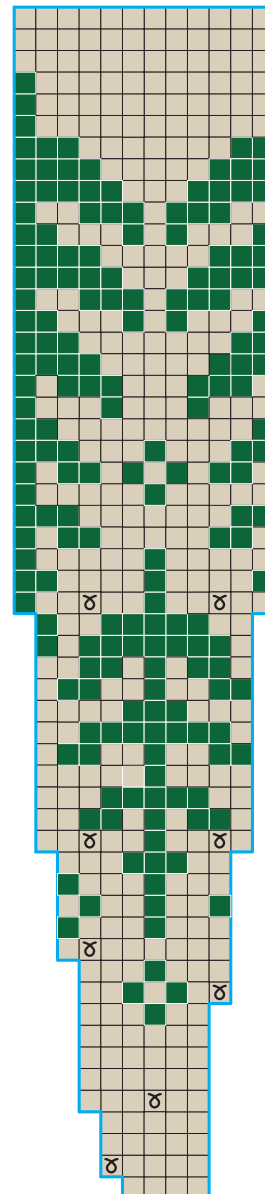
FINISHING

Weave in all ends and sew the neckband onto the inside of the neck using overcasting sts.

Wash blouse according to washing instructions on the labels and lay it flat to dry on a towel.

CHART

Chart is worked from bottom up, and from right to left on all rounds.



- Colour A
- Colour B
- M1L
- Repeat

