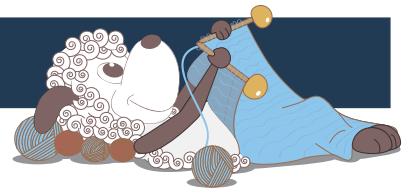


# Jardin - a colorwork brioche stitch shawl



Design: Rachel Søgaard

*Brioche stitch is on trend at the moment. Especially the colorwork brioche that designer Stephen West often designs, using strong, contrasting and variegated yarns and brioche. I have chosen a calmer approach to two color brioche in this shawl worked in Pernilla.*

3rd English edition - september 2020 © Filcolana A/S  
English translation: Signe Strømgaard

## Materials

Pernilla by Filcolana:

Main color: 250 g in color 814 (Storm Blue melange)

Contrast color 1: 50 g in color 819 (Raindrop melange)

Contrast color 2: 50 g in color 808 (Aqua Mist melange)

Contrast color 3: 50 g in color 823 (Juniper melange)

Contrast color 4: 50 g in color 824 (Parrot Green melange)

A small length of waist yarn - cotton if possible

4,5 mm circular needle and 2 double-pointed needles

5 mm crochet hook.

## Measurements

Approx. 45 x 215 cm after wash and blocking

## Gauge

21 sts and 38 rows in brioche stitch (remembering that each stitch counts for 2 rows) on 4,5 mm needles = 10 x 10 cm



## Special abbreviations

Sl3 wyif = Slip 3 sts purl-wise with yarn held in front.  
Sl3 wyib = Slip 3 sts purl-wise with yarn held in back.  
sl1yo = slip stitch purl-wise, while bringing the yarn to the front and then up and over the needle to create a yarn over.  
brp = brioche purl – purl stitch and yarn over together  
brk = brioche knit – knit stitch and yarn over together  
3in1 = increase - k1, yarn over, k1 in 1 stitch.  
b3tog = slip 1, k1, pass slipped stitch over, slip remaining stitch back to left needle, pass next stitch over, slip remaining stitch back on right needle

## Directions for knitting

The scarf starts with an i-cord. From this stitches are picked up for 2 color brioche knitting, with either side worked in stockinette stitch in the main color for a rolled edge. The scarf is finished with an i-cord. The scarf is "slanted" by working an increase after the first 3rd of stitches and an decrease before the last 3rd every 4th row.  
 The main color is the same throughout, while the contrast colors change.

## Shawl

Cast on 3 m sts using a crocheted provisional cast-on using the length of scrap yarn as follows: Chain 5 sts, break the yarn and pull the end of the yarn through the final chain. Pick up and knit 3 sts with the main color and a double-pointed needle from the back of the chains in the crocheted provisional cast-on (in each of the little "purl" bumps at the back of the chain).  
 Work i-cord in the main color: \*Do not turn, but slip sts to opposite end of needle, hold the yarn to the back and k3\*. Repeat from \* to \* until a total of 97 rows have been worked. Place the 3 sts on the circular needle and pick up and knit 97 sts along the i-cord. Unzip the provisional cast-on and place the 3 resulting sts on the left needle, then knit them. Do not turn, but slip all the sts to the opposite end of the needle, then work the same row in the main color.

## Set-up

With contrast color (RS): Sl3 wyif, \*sl1yo, p1\*.

Repeat from \* to \* to the last 4 sts, sl1yo, sl3 wyib. Turn.

With main color (WS): P3, \*1brp, sl1yo\*. Repeat from \* to \* to the last 4 sts, 1brp, p3. Do not turn, but slip the sts to the opposite end of the needle to work a row from the same side once more - now with the contrast color.

With contrast color (hanging at RS of work) (WS): Sl3 wyif, \*sl1yo, 1brk\*. Repeat from \* to \* to the last 4 sts, sl1yo, sl3 wyib. Turn.

## Pattern

Row 1 with main color (RS): K3, \*1brk, sl1yo\*. Work from \* to \* a total off 15 times. 3in1, sl1yo. Work from \* to \* a total off 16 times. B3tog, sl1yo. Work from \* to \* a total off 14 times. 1brk, k3. Do not turn.

Row 1 with contrast color (hanging at RS of work) (RS): Sl3 wyif, \*sl1yo, 1brp\*. Repeat from \* to \* to the last 4 sts, sl1yo, sl3 wyib. Turn.

Row 2 with main color (WS): P3, \*1brp, sl1yo\*. Repeat from \* to \* to the last 4 sts. 1brp, p3. Do not turn.

Row 2 with contrast color (hanging at WS of work) (WS): Sl3 wyif, \*sl1yo, 1brk\*. Repeat from \* to \* to the last 4 sts, sl1yo, sl3 wyib. Turn.

Repeat these 4 rows, while changing the contrast color as each skein is finished.

Split splice the new contrast color together with the end of the old one to avoid having to weave in the ends at the end.

End on a Row 2 with the contrast color, when there are only a few meters of the last skein left.

Now work 1 row of k1, p1 rib as the sts show with the main color. Break the yarn, slip the sts to the opposite end of the needle and bind off with an i-cord bind-off as follows: \*k2, sl1, k1, pass slipped stitch over, slip these 3 sts back to the left needle\*. Repeat from \* to \* until there are 6 sts left. Sew these sts together 3 and 3 using kitchener stitch.

Gently rinse work, put it through a (dry) spin cycle in the washing machine and lay it flat to dry.

## Changing contrast color in the shawl

