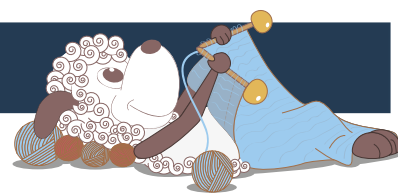


# Spot - a kids cardigan with little doggies



Design: Charlotte Kaae

*This sweet little cardigan has a bit of a tough edge with the dog head around the yoke. Originally the little heads are not actually dogs, but cats as the pattern is called Kettunøsin, but to me they look more like little pointy-eared dogs.*

1st English edition - August 2016 © Filcolana A/S  
English translation: Signe Strømgaard

## Materials

Color A: 100 (150) 150 (200) g Arwetta Classic by Filcolana in color 811 (Caribbean Sea)  
Color B: 30 (50) 70 (90) g Arwetta Classic by Filcolana in color 954 (Light Grey (melange))  
Color C: 20 (25) 30 (35) g Arwetta Classic by Filcolana in color 250 (Disco Green)  
2,5 and 3 mm circular needles  
2,5 and 3 mm double-pointed needles  
6 (7) 8 (9) small buttons

## Sizes

1 year/80 cl (2 years/92 cl) 4 years/104 cl (6 years/116 cl)  
The cardigan in the photos is size 116 cl

## Measurements

Body, chest: 50-53 (53-56) 56-59 (59-62) cm  
Sweater, chest: 56 (59) 61 (64) cm  
Sleeve length: 20 (25) 30 (33) cm  
Total length: 32 (36) 40 (45) cm

## Gauge

28 sts and 32 rows in stockinette stitch on 3 mm needles = 10 x 10 cm.

## Special abbreviations

M1: Make 1. Increase one stitch by lifting the chain between sts onto the left needle and knitting it through the back loop.

## Directions for knitting

The cardigan is worked from the bottom up, and is worked back and forth in stockinette stitch. The yoke is worked back and forth with colorwork. Instead of buttonholes, a band of snaps can be sewn onto the front edges instead.

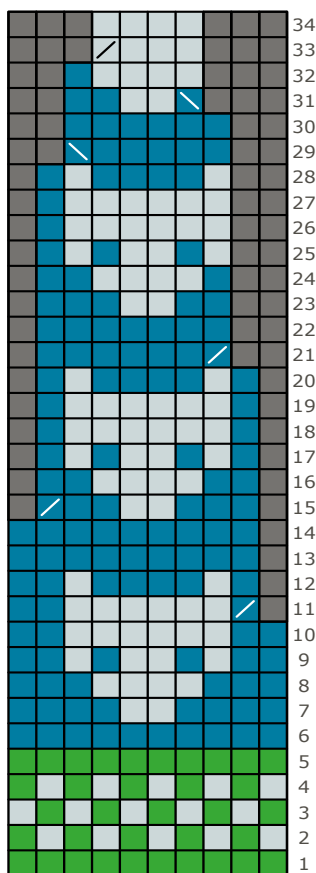
## Rib edge

Cast on 156 (164) 172 (180) sts with color C on a 2,5 mm circular needle and work back and forth in a broken rib pattern:  
Row 1: p1, \*k1, p3\*. Repeat from \* to \* to the last 3 sts, k1, p2.  
Row 2: \*k1, p3\*. Repeat from \* to \* to end of row.  
Row 3: Work as row 1.  
Row 4: Work as row 2, but in color B.

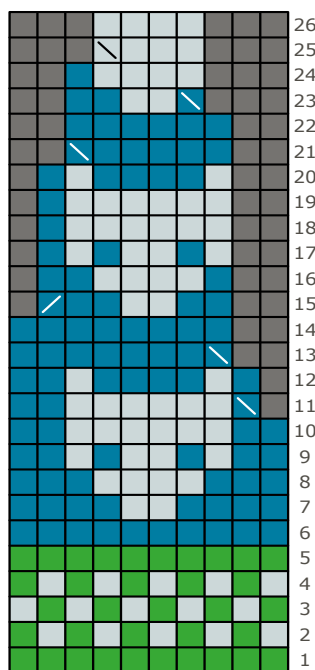


## Chart

Size 4 and 6 years



Size 1 and 2 years



color A

color B

color C

knit on the RS, purl on the WS

k2tog

ssk

np stitch

### Reading the chart

Row 1 (RS) is read from right to left. The next row (WS) is read left to right.



Continue in color B and repeat Row 1 and 2 until the ribbing measures 5 cm, end on an odd numbered row.

### Body

Change to a 3 mm circular needle. Continue in stockinette stitch with color A until the body measures 20 (23) 25 (27) cm.

Next row: Work 37 (39) 40 (42) sts, bind off 4 (4) 6 (6) sts for the armhole, work until there are 74 (78) 80 (84) sts on the needle after the bound off sts, bind off 4 (4) 6 (6) sts for the armhole, work to end of row.

Let the sts rest on the needle, while you work the sleeves.

### Sleeves

Cast on 44 (48) 52 (56) sts with color A on 2,5 mm double-pointed needles. Join in the round and place a marker for the beginning of the round, then work in broken rib:

Round 1: p1, \*k1, p3\*. Repeat from \* to \* to the last 3 sts, k1, p2.

Round 2: \*k3, p1 \*. Repeat from \* to \* end of round.

Round 3: Work as Round 1.

Round 4: Work as Round 2, but in color B.  
Continue in color B and work Round 1 and 2 until the ribbing measures 4 cm, end on a Round 1.  
Change to color A and 3 mm double-pointed needles. Continue in stockinette stitch while working increases: k1, M1, knit to the last stitch, M1, k1.  
Work increases as above every other round a total of 9 (10) 11 (12) times. There are now 62 (68) 74 (80) sts on the needle.  
Work straight in stockinette stitch until the sleeve measures 20 (25) 30 (33) cm.  
Next row: Bind off the first and last 2 (2) 3 (3) sts of the round for the armhole.  
Let the remaining 58 (64) 68 (74) sts rest on the needle and work a second sleeve the same way as the first.

### Yoke

Join the sleeves to the body over where sts were bound off for the armholes at either side of the body. There are now 264 (284) 296 (316) sts on the needle.

Work back and forth in stockinette stitch with color A on a 3 mm circular needle for 0 (2) 3 (6) cm. End on a WS row, where you decrease 4 (4) 6 (6) sts evenly across the row.

Work the charted pattern, but do not work the charted decreases at the right side of the chart in the first repeat of the pattern, nor the left decreases in the last repeat of the pattern on each row.

When all rows of the chart have been worked, there are a total of 110 (118) 122 (130) sts left on the needle.

Change to a 2,5 mm circular needle and color C. Now knit 10 rows, while working the following decreases on the 3rd of the 10 rows: \*k3, k2tog\*. Repeat from \* to \* to the last 5 (3) 2 (5) sts, knit to end of row.

There are now 89 (95) 98 (105) sts on the needle. Bind off loosely.

### Button band

For girls the button edge is worked on the left front, for boys it is worked on the right. Pick up and knit sts from the RS with color C on a 2,5 mm circular needle. Pick up 4 sts for every 5 rows. Knit 10 rows. Bind off loosely.

Mark the placement of 6 (7) 8 (9) buttons evenly along the band.

### Buttonhole band

Pick up and knit the same number of sts along the opposite edge. Knit 5 rows.

Next row (RS): Knit and work buttonholes where you marked the placement on the button band in the following way: yarn over, k2tog.

Knit 3 rows.

Bind off loosely.

### Finishing

Sew holes under sleeves. Weave in ends.

