

filcolana

OBSESSED WITH QUALITY YARN SINCE 1952



Design: Vetus Stercore
English translation: Vetus Stercore

SYRENI

6th edition - February 2022 © filcolana
#FilcolanaSyreni

Syreni is a classic tight-fitting cardigan with a deep V-neck and a full-length slim sleeve. It is knitted in a wavy pattern that creates the illusion of fish scales. ‘Syreni’ means mermaid in Latin and who doesn’t dream of being able to swim like a mermaid when you meet the sea? Now you can look like someone who can. Syreni can be used as a warm and decorative layer under a coat without taking up too much space. The feminine shape and textured pattern gives a classic look with lots of edge and options.

SIZES

S (M) L (XL)

MEASUREMENTS

Bust: 90 (100) 110 (120) cm

Waist: 74 (80) 90 (100) cm

Sleeve length: 51 (51) 51 (51) cm

Length: 49,5 (51,5) 57,5 (57,5) cm

GAUGE

30 sts and 40 rows in stockinette on needle 3 mm
= 10 x 10cm.

The needle size is for guidance only. If you have more stitches on 10cm/4in, change to larger needles, if you have fewer stitches on 10cm/4in, change to smaller needles.

MATERIALS

Yarn from Filcolana

300 (350) 400 (450) g **Arwetta** colour 147
(Hunter Green)

Circular needles 2.5 and 3 mm 60-80 cm

Doublepointed needles 3 mm

(Dpns can be omitted if magic loop technique is used)

Stitchmarkers

3 Buttons





Technicals

SPECIAL ABBREVIATIONS

PM

Place marker

Slk

Slip 1 st knitwise

Slm

Slip marker from left to right needle

M1L (Make 1 Left)

From the front, lift the horizontal strand between stitches with the left needle and knit through the back loop.

M1R (Make 1 Right)

From the back, lift the horizontal strand between stitches with the left needle and knit through the front loop.

K2tog

Knit 2 sts together.

P2tog

Purl 2 sts together.

K1tbl

Knit 1 st through back loop

P1tbl

Purl 1 st through back loop.

K1f&b

Knit in front and back loop of same st (increase).

SPECIAL TECHNIQUES

Knitted cast-on

K1, but leave the stitch on the left needle, slip the new stitch on the right needle twisted onto the left needle in front of the first stitch, repeat from * to * until you have cast-on the desired number of stitches.

CHART

See page 5.

Workflow

The cardigan is knitted from the bottom up in one piece until the armholes, when it's divided into back piece and front pieces which are finished separately.

The sleeves are knitted in the round and are finished off by being sewn onto the bodice.

The front edges are knitted at the same time as the bodice and then continued separately to create the collar which then is sewn to the neckline of the back piece.

To create a uniform and beautiful edge the first stitch is slipped on all rows.





Pattern

FRONT EDGES

Left front edge (button-band)

RS: Work rib (k1, p1).

WS: Slk, work rib (k1, p1), end with k1.

Right front edge (buttonhole-band)

RS: Slk, work rib (p1, k1), end with p1.

WS: Work rib (p1, k1).

The buttonhole is worked as follows:

1st buttonhole row (RS): Slk, 4 (4) 5 (5) sts rib (p1, k1), bind off next 4 sts, 5 (5) 6 (6) sts rib, end p1.

2nd buttonhole row (WS): 5 (5) 6 (6) sts rib (k1, p1), knit 5 new stitches using the knitted cast-on technique (see special techniques), lift the 5th st over the first of the next st (to reinforce the buttonhole), 5 (5) 6 (6) sts rib, end with k1.

The buttonholes are made at 1.8, 11.5 and 21 cm.



BODY

On circular needle 2.5 mm cast on 253 (285) 321 (353) sts.

Knit back and forth and PM after the first 14 (14) 16 (16) sts (right front edge) and PM before the last 14 (14) 16 (16) sts (left front row).

1st row (WS): Slk, work rib (k1, p1), to last 2 sts, k2.

2nd row (RS): Slk, work rib (p1, k1), to end of row.

Repeat these two rows, while remembering to make the first buttonhole in the right front edge (seen from RS) when the work measures 1,8.

Continue until the rib measures 5 cm.

Change to circular needle 3 mm.

Next row (WS): Continue working rib as the stitches indicates and place the first sidemarker 56 (64) 72 (80) sts after the button band marker (left front piece), work 56 (64) 72 (80) sts of rib, k2tog, work next 55 (63) 71 (79) sts in rib (back piece), place second sidemarker, work to end of row (right front piece) = 252 (284) 320 (352) sts.

Work pattern by chart (first row is knitted from RS), except the outer 14 (14) 16 (16) sts which are worked in rib to form button band.

Knit 6 rows by the chart, the last row is knitted from WS.

Next row (RS) (increase row): * knit till last stitch before side marker, M1R, p1, slm, k1, M1L *, repeat * to * one more time, work to end of row.

Next row: Knit according to chart, the new stitches are added into the pattern, this way the pattern will mirror across the side seam marker.

Repeat these last 8 rows a total of 12 (11) 11 (11) times, while remembering to make the buttonholes in the right front edge (seen from RS) when the work measures 11,5 and 21 cm. Last row is a WS row

AT SAME TIME, when the last buttonhole is made, the decreasing begins along the front edges, as follows:
Next row (RS): Knit the front edge stitches, slm, work 2 sts together (either k or p as the pattern indicates),



knit till last 2 sts before the edge marker, work 2 sts together (either k or p as the pattern indicates), slm, work to end of row.

Repeat decreasing row on every 5th (4th) 4th (4th) row a total of 20 (25) 25 (25) times, **AT SAME TIME** work armhole when there is 284 (310) 338 (370) sts on the needle and the work measures 29 (30) 34 (34) cm, as follows:

Next row (RS): Continue as established and bind off 8 (8) 10 (12) sts at each side of the side seam markers (16 (16) 20 (24) sts in all at each side) for armhole.

From this point the front and back are knitted separately.

LEFT FRONT PIECE

Next row (WS): Knit the front edge and follow the chart as before till the bind off sts, turn work and leave remaining stitches on back and right front to rest.

Next row (RS): K2tog, continue according to chart and front edge as before.

Repeat these two rows 10 (10) 12 (18) times in total. **NOTE:** Keep decreasing along the button band at every 5th (4th) 4th (4th) row.

Knit to front piece measures 18 (19) 20,5 (20,5) cm from the armhole bind off. End with a row from WS.

Shoulder

Bind off 6 (8) 6 (6) sts in the beginning of each RS row 5 (4) 6 (6) times in total, to 14 (14) 16 (16) sts left on needle. These are the button band rib edge stitches.

Work 7,5 (8) 8 (8) cm in rib pattern on remaining sts, this will form the neck-band. Bind off all 14 (14) 16 (16) sts stitchwise.

Slip back stitches to a stitch holder.

Right front piece

Join yarn to the WS of the right front piece stitches.

Next row (WS): p2tog, continue according to chart and front edge as before.

Next row (RS): Knit the front edge and follow the chart as before.

Repeat these two rows 10 (10) 12 (18) times in total. **NOTE:** Keep decreasing along the button band at every 5th (4th) 4th (4th) row.

Work to front measures 18 (19) 20,5 (20,5) cm from the armhole bind off. End with a row from RS.

Shoulder

Bind off 6 (8) 6 (6) sts in the beginning of each WS row 5 (4) 6 (6) times in total = 14 (14) 16 (16) sts left on needle. These are the button band rib edge stitches.

Work 7,5 (8) 8 (8) cm in rib pattern with these sts, this will form the neck-band. Bind off all 14 (14) 16 (16) sts stitchwise.



BACK

Join yarn to the WS of the back stitches.

Next row (WS): Continue according to chart as before until bind off.

Next row (RS): k2tog, knit according to chart till the last 2 sts, k2tog.

Repeat these two rows 10 (10) 12 (18) times = 100 (114) 122 (122) sts on needle.

Continue knitting according to the diagram until the back measures 18 (19) 20,5 (20,5) cm from the armhole bind off. Last row is a WS row.



Next row (RS): Knit 30 (32) 36 (36) sts according to the chart, bind off the next 40 (50) 50 (50) sts, finish the row according to the chart.

Each shoulder is worked separately.

Left shoulder

Bind off 6 (8) 6 (6) sts in the beginning of each WS row 5 (4) 6 (6) times in total until all stitches are bound off.

Right shoulder

Join yarn to the WS of the shoulder stitches.

Next row (WS): Knit according to the chart.

Now bind off 6 (8) 6 (6) sts in the beginning of each RS row 5 (4) 6 (6) times in total, until all stitches are bound off.

SLEEVES (KNITTED IN THE ROUND)

With dpn needles 3 mm cast on 48 (48) 56 (56) sts. PM and join in round.

Knit 5 cm twisted rib pattern (k1tbl, p1tbl).

Next round: k1f&b all sts = 96 (96) 112 (112) sts on needle.

Continue in pattern according to chart until work measures 51 cm or the desired sleeve length.

Next round: Knit to last 8 (8) 10 (10) sts before marker, bind sts off to marker, remove the marker and bind off first 8 (8) 10 (10) sts of the round = 80 (80) 92 (92) sts on needle.

From now on the sleeve is knitted back and forth.

Work sleeve cap as follows:

Next row (WS): knit according to the chart.

Next row (RS): k2tog, knit according to the chart, k2tog

Repeat these two rows 18 (20) 20 (26) times = 44 (40) 52 (40) sts.

Now k2tog at RS, p2tog at WS in both ends of all rows 12 (10) 16 (10) times = 20 (20) 20 (20) sts.

Bind off all stitches stitchwise.

Knit one more sleeve.

FINISHING

Sew the shoulder seams together.

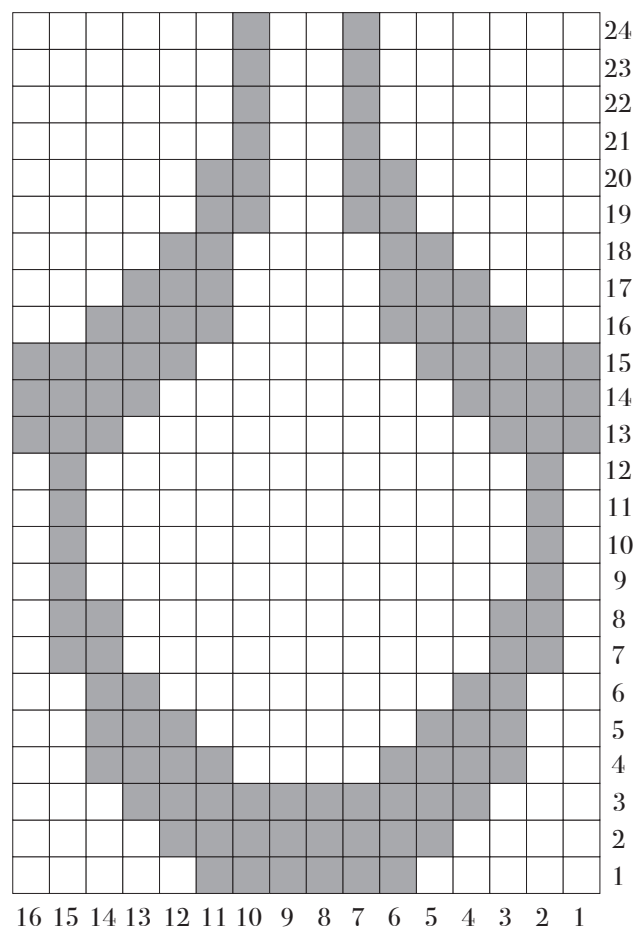
Sew together the ends of the front edge rib stitches and sew the collar to the neckline in the back.

Sew the sleeves into the armholes.

Weave in all ends and sew in buttons.

Wash the cardigan according to the instructions on the yarn label and let it dry flat on a towel.

CHART



□ Knit on RS, purl on WS

■ Purl on RS, knit on WS