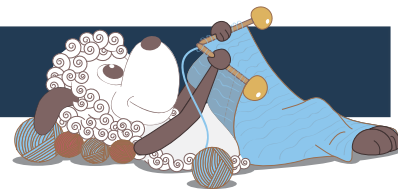


Iris - a beautiful and soft sweater



Design: Hanna Maciejewska

Iris is a roomy, slightly cropped pullover with saddle shoulders and straight, wide sleeves decorated with a lovely feminine lace pattern. Iris is worked top-down seamlessly in one piece; this super-soft sweater is knit using fingering weight Merci held together with lace weight Tilia to give it a nice fluffy feel.

1st English edition - January 2020 © Filcolana A/S

Materials

200 (200) 250 (250) 300 (300) 350 (400) g Merci by Filcolana in color 606 (Grape)
100 (100) 125 (125) 150 (150) 175 (200) g Tilia by Filcolana in color 349 (Mauve)
3,75 mm and 4 mm circular needles, 60 and 100 cm
3,75 mm and 4 mm double-pointed needles
6 stitch markers
Stitch holder or scrap yarn

Sizes

XXS (XS) S (M) L (XL) 2XL (3XL)

Measurements

Body, chest: 81 (86) 91 (96) 101 (112) 122 (132) cm
Sweater, chest: 112 (118) 122 (128) 132 (143) 151 (162) cm
Total length: 40 (42) 43 (46) 46 (49) 50 (53) cm
Sleeve length: 45 (45) 46 (46) 47 (47) 48 (48) cm
The pullover is designed to be worn with up to 31 cm of positive ease.

Gauge

19 sts and 25 rows in Stockinette stitch with one strand of each yarn held together on 4 mm needles after blocking = 10 x 10 cm.

Special abbreviations

BOR: beginning of the round.

M1L: from the front, lift the horizontal strand between



stitches with the left needle and knit through the back loop.

M1LP: from the front, lift the horizontal strand between stitches with the left needle and purl through the back loop.

M1R: from the back, lift the horizontal strand between stitches with the left needle and knit through the front loop.

M1RP: from the back, lift the horizontal strand between stitches with the left needle and purl through the front loop.

k1tbl: knit stitch through back loop.

p1tbl: purl stitch through back loop.

pm: place marker.

sm: slip marker.

ssk: slip 2 sts knit-wise one after the other, slip them back onto the left needle and knit them together through the back loop.

Sl1 wyib: Slip 1 stitch purl-wise with the yarn held in back.

Sl1 wyif: Slip 1 stitch purl-wise with the yarn held in front.

Special techniques

German Short Rows

- on a knit row: Knit to the stitch specified in the pattern and turn work to the purl side. With yarn in front, slip the first stitch to the right hand needle as if to purl, then bring yarn over the top of the needle to the back of the work and pull tight. This will distort the stitch and makes it look like a doubled stitch (DS). Bring yarn to front between the needles and begin purling keeping a tighter tension for a few first sts.

- on a purl row: Purl to the stitch specified in the pattern and turn work to the knit side. Bring yarn to the front between the needles. Slip the first stitch to the right hand needle as if to purl, then bring yarn over the top of the needle to the back of the work and pull tight. This will distort the stitch and makes it look like a doubled stitch (DS). Begin knitting keeping a tighter tension for a few first sts.

- picking up doubled stitches: Work each doubled stitch like a single stitch: knit through both legs of the DS on a knit row (as a knit 2 together) and purl through both legs of the DS on a purl row (as a purl 2 together).

Tiny Bobbles Stitch

Multiples of 2 sts.

Round 1: * Sl1wyib, [k1, yo, k1] into next stitch*, repeat from * to * to end.

Round 2: * Sl1wyif, p3tog*, repeat from * to * to end.

Directions for knitting

This pullover is knitted top down, completely seamlessly with dropped sleeves. The neckline shaping is worked using German Short Rows. First, you knit the back and front, then, when you reach the underarms, join both pieces to work them together for the body.



Once you complete the body, pick up stitches around the armholes to work the sleeves from the top down.

Yoke

Using 3,75 mm needles and a long tail cast-on method, cast on 84 (90) 90 (96) 96 (100) 110 (110) sts. Join to work in round being careful not to twist and place marker for BOR (center back).

Rounds 1 – 5: Knit.

Rounds 6 and 7: Work Rounds 1 and 2 of Tiny Bobbles Stitch.

Rounds 8 and 9: Knit.

Round 10 – increases: *P6 (5) 5 (6) 6 (5) 5 (5), M1RP*, repeat from * to * to end.

There are now 98 (108) 108 (112) 112 (120) 132 (132) sts on the needle.

Rounds 11 and 12: *P1, k1tbl*, repeat from * to * to end.

Round 13: P16 (18) 18 (19) 19 (21) 24 (24), pm, p17, pm, p32 (37) 37 (39) 39 (43) 49 (49), pm, p17, pm, p16 (19) 19 (20) 20 (22) 25 (25), sm (BOR).

There are now 32 (37) 37 (39) 39 (43) 49 (49) sts on each front and back and 17 sts for each Sleeve Panel. Change to 4 mm needles.

Short Row Neckline Shaping

Row 1 (RS): K to 1 stitch before m, M1L, k1, sm, [p1, k1tbl] to 1 stitch before next m, p1, sm, k1, M1R, k2, turn. [2 sts increased]

Row 2 (WS): DS, p to 1 stitch before m, M1LP, p1, sm, [k1, p1tbl] to 1 stitch before next m, k1, sm, p1, M1RP, p to BOR, sm, p to 1 stitch before next m, M1LP, p1, sm, [k1, p1tbl] to 1 stitch before next m, k1, sm, p1, M1RP, p2, turn. [4 sts increased]

Row 3: DS, k to 1 stitch before m, M1R, k1, sm, [p1, k1tbl] to 1 stitch before next m, p1, sm, k1, M1L, k

to BOR, sm, k to 1 stitch before next m, M1R, k1, sm, [p1, k1tbl] to 1 stitch before next m, p1, sm, k1, M1L, k to DS, knit DS, k2, turn. [4 sts increased]
 Row 4: DS, p to 1 stitch before m, M1LP, p1, sm, [k1, p1tbl] to 1 stitch before next m, k1, sm, p1, M1RP, p to BOR, sm, p to 1 stitch before next m, M1LP, p1, sm, [k1, p1tbl] to 1 stitch before next m, k1, sm, p1, M1RP, p to DS, purl DS, p2, turn. [4 sts increased]
 Rows 5 and 6: Repeat Rows 3 and 4. [8 sts increased]

Row 7: DS, k to 1 stitch before m, M1R, k1, sm, [p1, k1tbl] to 1 stitch before next m, p1, sm, k1, M1L, k to BOR, sm, k to 1 stitch before next m, M1R, k1, sm, [p1, k1tbl] to 1 stitch before next m, p1, sm, k1, M1L, k to DS, knit DS, k3, turn. [4 sts increased]
 Row 8: DS, p to 1 stitch before m, M1LP, p1, sm, [k1, p1tbl] to 1 stitch before next m, k1, sm, p1, M1RP,

p to BOR, sm, p to 1 stitch before next m, M1LP, p1, sm, [k1, p1tbl] to 1 stitch before next m, k1, sm, p1, M1RP, p to DS, purl DS, p3, turn. [4 sts increased]

Row 9: DS, k to 1 stitch before m, M1R, k1, sm, [p1, k1tbl] to 1 stitch before next m, p1, sm, k1, M1L, k to BOR, sm, k to 1 stitch before next m, M1R, k1, sm, [p1, k1tbl] to 1 stitch before next m, p1, sm, k1, M1L, k to DS, knit DS, k4, turn. [4 sts increased]
 Row 10: DS, p to 1 stitch before m, M1LP, p1, sm, [k1, p1tbl] to 1 stitch before next m, k1, sm, p1, M1RP, p to BOR, sm, p to 1 stitch before next m, M1LP, p1, sm, [k1, p1tbl] to 1 stitch before next m, k1, sm, p1, M1RP, p to DS, purl DS, p4, turn. [4 sts increased]

Row 11: DS, k to 1 stitch before m, M1R, k1, sm, [p1, k1tbl] to 1 stitch before next m, p1, sm, k1, M1L, k to BOR, sm.

There are now 138 (148) 148 (152) 152 (160) 172 (172) sts on the needle - 52 (57) 57 (59) 59 (63) 69 (69) sts on each front and back, 17 sts for each sleeve.

Yoke Shaping

Rounds 1 and 2: K to 1 stitch before m, M1R, k1, sm, [p1, k1tbl] to 1 stitch before next m, p1, sm, k1, M1L, k to 1 stitch before next m, M1R, k1, sm, [p1, k1tbl] to 1 stitch before next m, p1, sm, k1, M1L, k to BOR, sm. [8 sts increased]
 Knit DS when you come to them.

Round 3: K to 1 stitch before m, M1R, k1, sm, work appropriate round of Sleeve Panel (starting with Round 1), sm, k1, M1L, k to 1 stitch before next m, M1R, k1, sm, work appropriate round of Sleeve Panel (starting with Round 1), sm, k1, M1L, k to BOR, sm. [4 sts increased]

Repeat last round 20 (20) 22 (24) 26 (29) 30 (35) more times, working appropriate rounds of Sleeve Panel. There are now 230 (240) 248 (260) 268 (288) 304 (324) sts on the needle in total - 98 (103) 107 (113) 117 (127) 135 (145) sts on each front and back, 17 sts on each Sleeve Panel.

Dividing the work

Row 1 (RS): Knit to m, turn.

Row 2 (WS): Purl to BOR, remove BOR marker, purl to next m, turn

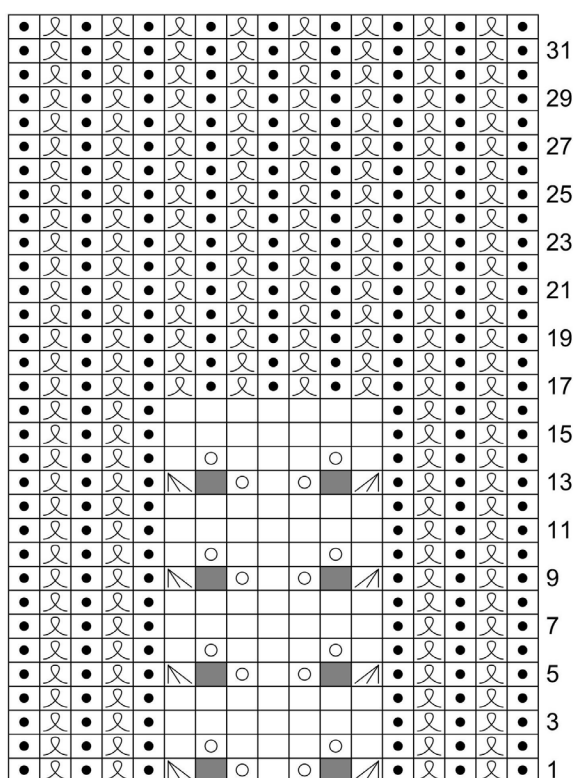
Work back and forth across the 98 (103) 107 (113) 117 (127) 135 (145) sts for the back.

Place all remaining sts on holder. Make a note of the last Sleeve Panel round you ended because you will resume working on it later.

Back

Continue working back and forth in stockinette stitch until back measures approx. 12 (13) 14 (15) 15 (16) 17 (18) cm from where the sts were divided, ending with a WS row.

Chart



- No stitch
- k
- p
- ◌ k1tbl
- yo
- ▤ k3tog
- ▥ sssk

Next Row (RS) – underarm shaping: K2, M1L, knit to last 2 sts, M1R, k2. [2 sts increased]

Repeat underarm shaping row every RS row 2 more times. There are now 104 (109) 113 (119) 123 (133) 141 (151) sts on the back.

End with a WS row, break yarn and place sts on a holder or spare needle.

Front

With RS facing, slip the sts for each Sleeve Panel together with their markers onto separate holders and place the 98 (103) 107 (113) 117 (127) 135 (145) sts for the front on 4 mm needles. Join yarn at right (sleeve) edge.

Continue working back and forth in stockinette stitch until front measures approx. 12 (13) 14 (15) 15 (16) 17 (18) cm from where the sts were divided for front and back, ending with a WS row.

Next Row (RS) – underarm shaping: K2, M1L, knit to last 2 sts, M1R, k2. [2 sts increased]

Repeat underarm shaping row every RS row 2 more times. There are now 104 (109) 113 (119) 123 (133) 141 (151) sts on the front.

End with a WS row. Do not break the yarn.

Body

Slip back stitches from holder to spare needle. Keep Sleeve Panel sts on their holders.

Set up Round 1: Knit front sts, cast on 2 new sts in extension of the front sts, pm, cast on 1 additional underarm stitch, knit back sts from spare needle, pm, cast on 1 stitch new sts in extension of the back sts, pm, cast on 2 additional underarm sts, knit to 1 stitch before m, p1, sm - this is the new BOR.

There are a total of 214 (224) 232 (244) 252 (272) 288 (308) sts on the needle.

Round 1: Knit to m, sm, p1, knit to 1 stitch before next m, p1, sm (BOR).

Work in stockinette stitch with one purl stitch on each side as established, until body measured approx. 13 (14) 14 (15) 15 (16) 16 (17) cm from underarm, or approx. 13 (13) 13 (14) 14 (15) 15 (16) cm shorten than the desired total length.

Change to 3,75 mm needles.

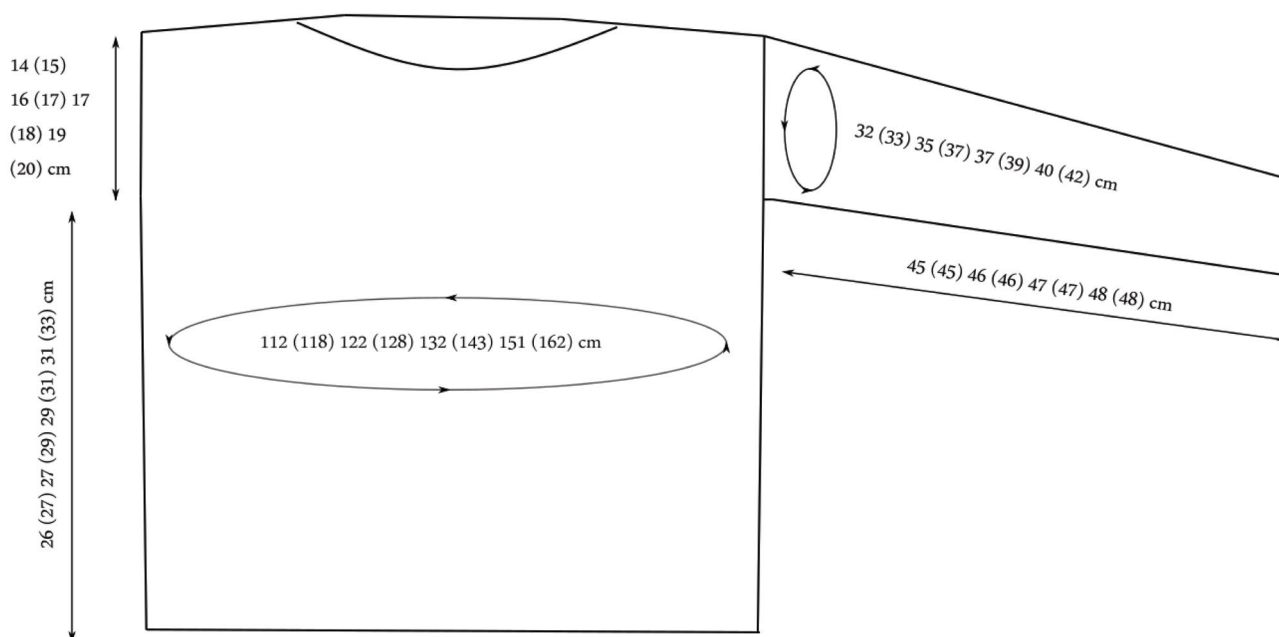
Next Round: Purl to m, remove m, purl to end.

Next Round – ribbing: *K1 tbl, p1*, repeat from * to * to end.

Repeat last round, working in twisted rib until the ribbing measures approx. 13 (13) 13 (14) 14 (15) 15 (16) cm and bind off all sts purl-wise.

Sleeves

Slip Sleeve Panel sts together with their markers onto a spare 4 mm needle and re-join the yarn. Pick up and knit sts for the sleeve from the RS using 4 mm needles. Pick up and knit 21 (22) 24 (25) 25 (27) 28 (30) sts along the armhole to the underarm sts, pick



up and knit first 2 underarm sts, pm, then pick up and knit 1 remaining underarm stitch, pick up and knit 21 (22) 24 (25) 25 (27) 28 (30) sts along the armhole to Sleeve Panel. There are now 62 (64) 68 (70) 70 (74) 76 (80) sts on the needle.

Set up Round: Work appropriate round of Sleeve Panel to m, sm, knit to 1 stitch before m, p1, sm (this is BOR).

Work 14 rounds as follows: Knit to m, sm, work appropriate round of Sleeve Panel, sm, knit to last stitch, p1.

Next Round – sleeve shaping: Ssk, knit to m, sm, work appropriate round of Sleeve Panel, sm, knit to 3 sts before end, k2tog, p1.
There are now 60 (62) 66 (68) 68 (72) 74 (78) sts on the needle.

Now, continue as established until sleeve measures approx. 43 (43) 44 (44) 45 (45) 46 (46) cm from underarm, or to approx. 2 cm before desired total length.

Change to 3,75 mm needles.

Round 1: Purl to marker, sm, work appropriate round of Sleeve Panel, sm, purl to end.

Remove all markers except m for BOR.

Next Round – ribbing: *K1 tbl, p1*, repeat from * to * to end.

Repeat last round 3 more times. Bind off all sts purl-wise.

Finishing

Weave in all ends and block sweater.

Sleeve panel - written instruction

Row 1: P1, [k1tbl, p1] twice, k3tog, yo, k1, yo, sssk, p1, [k1tbl, p1] twice.

Row 2: P1, [k1tbl, p1] twice, k1, yo, k3, yo, k1, p1, [k1tbl, p1] twice.

Rows 3-4: P1, [k1tbl, p1] twice, k7, p1, [k1tbl, p1] twice.

Rows 5-16: Work as Row 1-4 three times.

Rows 17-32: P1, [k1tbl, p1] 8 times.