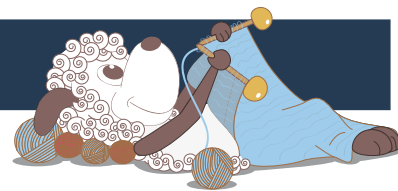


Britta - a short sleeved tunic



Design: Hanna Maciejewska

A lovely tunic with a gorgeous lace panel to keep the girls warm where it counts. The design is worked from the top down and is completely seamless.

1st English edition - August 2015 © Filcolana A/S

Materials

200 (220) 250 (290) 340 (400) 460g Anina by Filcolana

Circular needle and DPNs 3.5 mm

Circular needle 4 mm

2 stitch markers or scraps of yarn in one color (A)

2 stitch markers or scraps of yarn in a second color (B)

1 wool needle

Sizes

92 cl/2 years (104 cl/4 years) 116 cl/6 years (128 cl/8 years) 140 cl/10 years (152 cl/12 years) 164 cl/14 years

The model in the photo is size 116 cl / 6 years in color 1055.

Measurements

Please also see schematic on page 2

Chest: 53 (58) 63 (67) 71 (76) 80 cm

Length: 41.5 (46) 49 (53.5) 57 (61) 64 cm

Gauge

21 sts and 31 rows in stockinette stitch on 4 mm needles = 10 x 10 cm WITH TWO STRANDS OF YARN HELD TOGETHER

Abbreviations

Approx: approximately



kfbf: knit into the front of the stitch, leaving the stitch on the needle, then knit into the back, and then front of the same stitch.

LLI: using your left needle, lift the stitch 2 stitches below the stitch just knit on the right needle and place it on the left needle; knit the lifted stitch through the front loop

m: marker

pm: place marker

P/W: pick up wrap when you encounter it and work it together with wrapped st.

RLI: using your right needle, pull the knit stitch one row below the first stitch on your left needle and place it on the left needle; knit the "lifted" stitch through the back loop

RS: right side

sm: slip marker

ssp: slip two stitches, one at a time as if to knit and purl them together through the back loops

st/s: stitch/stitches

w&t: (Wrap & Turn) = Short rows - bring the yarn to the front of your work, slip the next stitch purlwise to the right-hand needle, bring the yarn to the back of your work around the slipped stitch and slip stitch back to the left-hand needle. Turn the work to begin working back in other direction.

WS = wrong side

Direction of knitting

Britta is knitted top down, completely seamlessly. First, you knit the back from the shoulder line to the armhole, then carefully pick up the provisional cast on stitches at the shoulders and work front down to the armhole. At that point you join all pieces together and continue knitting down.

Back

Using 4 mm needles and the provisional cast-on method (see page 3), cast on 75 (81) 87 (93) 99 (105) 111 sts with two strands of yarn.

Set up row (WS): P20 (23) 25 (27) 29 (31) 33, pm A2, p35 (35) 37 (39) 41 (43) 45, pm A1, p to end.

Neckline and shoulder shaping

Row 1 (RS): K to m A1, sm A1, w&t

Row 2 (WS): P to 5 (5) 5 (8) 8 (10) 10 sts past m A1, w&t.

Row 3: K to previously wrapped st (P/W), w&t.

Row 4: P to 10 (10) 10 (14) 14 (16) 16 sts past m A1 (P/W), w&t.

Row 5: K to previously wrapped st (P/W), w&t.

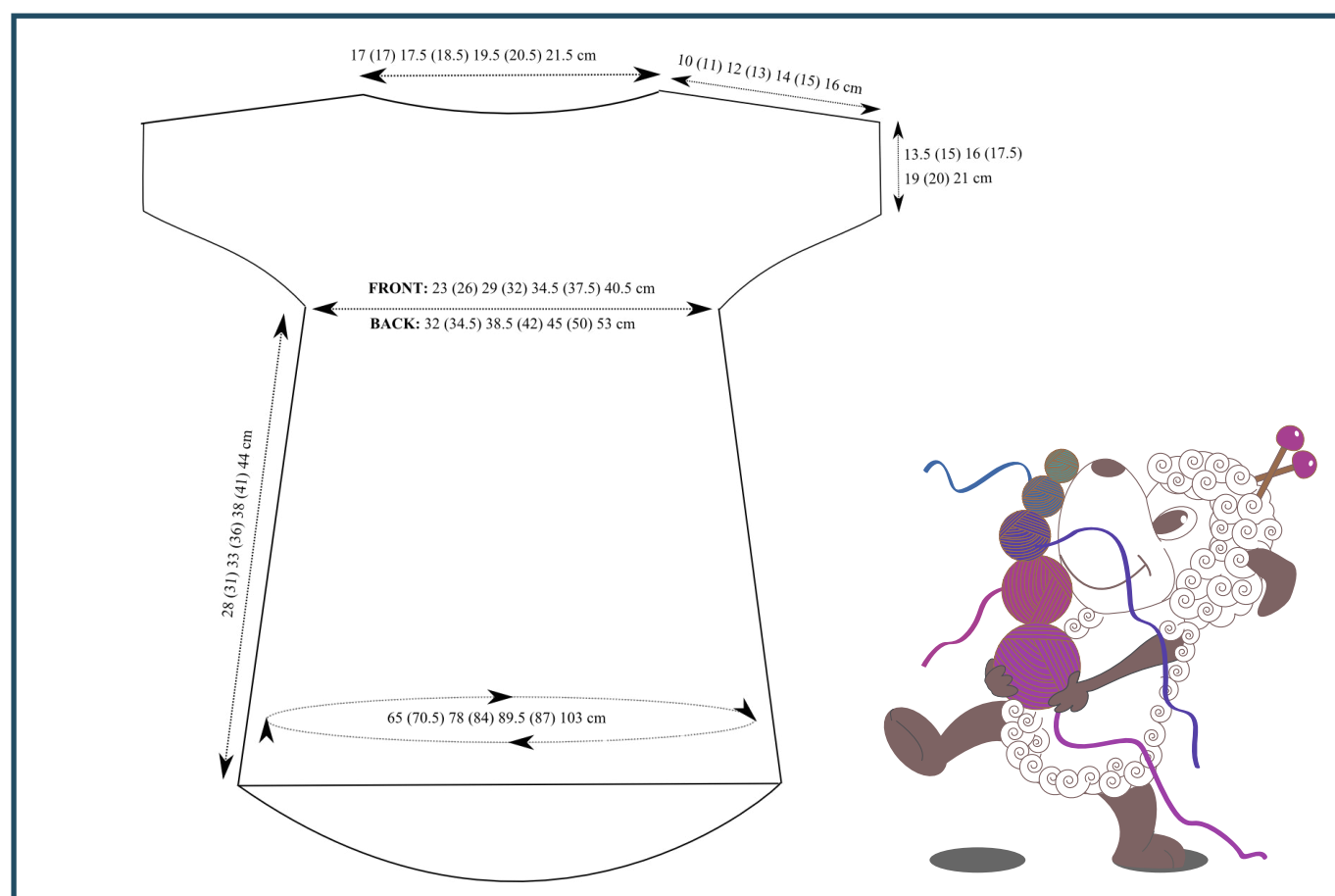
Row 6: Purl (P/W).

Row 7: Knit (P/W).

Row 8: P to m A2, sm A2, w&t.

Row 9: K to 5 (5) 5 (8) 8 (10) 10 sts past m A2, w&t.

Row 10: P to previously wrapped st (P/W), w&t.



Row 11: K to 10 (10) 10 (14) 14 (16) 16 sts past m A2 (P/W), w& t.

Row 12: P to previously wrapped st (P/W), w& t.

Row 13: Knit (P/W).

Row 14: Purl (P/W). Remove markers A.

Row 15: Knit.

Row 16 and all WS rows unless otherwise stated: Purl.

Continue in stockinette stitch, repeating Rows 15 and 16, until work measures approx. 13.5 (15) 16 (17.5) 19 (20) 21 cm from the cast on (along the armband). End with a WS row, cut yarn and place all sts on holder.

Front

With RS facing, carefully remove all sts of provisional cast-on and place them on 4 mm needles. Attach the yarn.

Set up row (WS): P20 (23) 25 (27) 29 (31) 33, pm A2, place next 35 (35) 37 (39) 41 (43) 45 sts on the holder (back collar), then take a piece of waste yarn and, using working yarn and working needles, provisionally cast on 35 (35) 37 (39) 41 (43) 45 sts, (front collar), pm A1, p to end.

At this point there should be 75 (81) 87 (93) 99 (105) 111 sts on the needles.

Neckline and shoulder shaping

Row 1 (RS): K to m A1, sm A1, w&t

Row 2 (WS): P to 5 (5) 5 (8) 8 (10) 10 sts past m A1, w&t.

Row 3: K to previously wrapped st (P/W), w&t.

Row 4: P to 10 (10) 10 (14) 14 (16) 16 sts past m A1 (P/W), w&t.

Row 5: K to previously wrapped st (P/W), w&t.

Row 6: Purl (P/W).

Row 7: K26 (29) 32 (35) 38 (41) 44 sts (P/W), pm B, p1, k2, p1, k7, p1, k7, p1, k2, p1, pm B, k to end.

Row 8: P to m A2, sm A2, w&t.

Row 9: K to 5 (5) 5 (8) 8 (10) 10 sts past m A2, w&t.

Row 10: P to previously wrapped st (P/W), w& t.

Row 11: K to 10 (10) 10 (14) 14 (16) 16 sts past m A2 (P/W), w& t.

Row 12: P to previously wrapped st (P/W), w& t.

Row 13: Knit (P/W).

Row 14: P to m B (P/W), sm B, k1, p2, k1, p7, k1, p7, k1, p2, k1, sm B, p to end (P/W). Remove markers A.

Row 15 (RS): K to m B, sm B, work row 1 of the Lace Pattern, sm B, k to end.

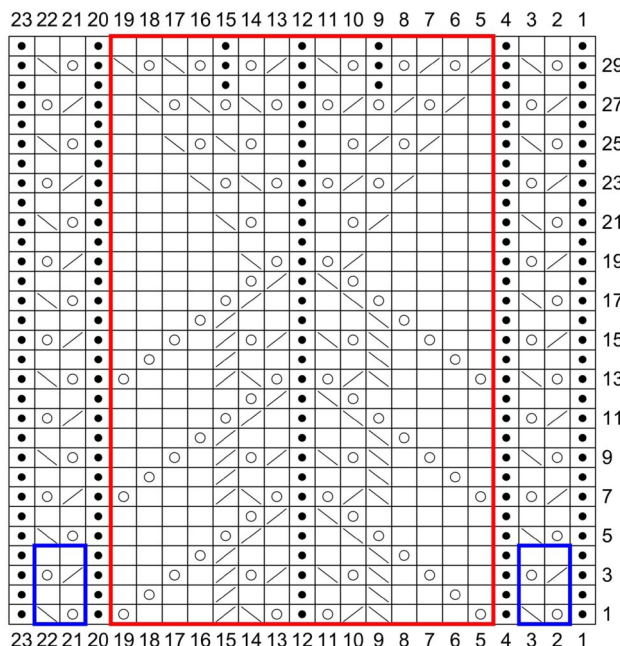
Row 16 (WS): P to m B, sm B, work row 2 of the Lace Pattern, sm B, p to end.

Continue in established pattern, repeating Rows 15 and 16 and working appropriate rows of the Lace Pattern, until work measures approx. 13.5 (15) 16 (17.5) 19 (20) 21 cm from the cast on (along the armband). End with a WS row, do not cut yarn.

Technique: Provisional cast-on

Crochet a row of chain stitches in a contrasting yarn (later to be removed). The row needs to be 5-10 chain sts longer than the required number of cast on stitches

Pick up and knit the required number of cast on stitches using the project yarn. The stitches are picked up from under the third leg of the chain stitch - ie. the little "bump" behind the chain.



Stitches	Borders
RS: k; WS: p	Pattern Repeat
RS: p; WS: k	Pattern Repeat
yo	
RS: k2tog; WS: p2tog	
RS: ssk; WS: ssp	

Please see page 4 and 5 for written instructions

Body

Slip stitches of the back section from the waste yarn or the stitch holder to spare needle.

Work front sts in established pattern, cast on 1 st (underarm), place side marker A, cast on 1 st (underarm), knit back sts, cast on 2 sts (underarm). Join in the round and place marker A for the beginning of the round. [154 (166) 178 (190) 202 (214) 226 sts on the needles]

Round 1: K2tog, work front sts according to established pattern to 3 sts before m A, ssk, k1, sm A, k1, k2tog, k to 4 sts before end, ssk, k2. [4 sts decreased]

Repeat last round 9 more times. [36 sts decreased; 114 (126) 138 (150) 162 (174) 186 sts on the needles: 57 (63) 69 (75) 81 (87) 93 sts for each front and back]

Round 11: Work front sts according to established pattern, sm A, k24 (27) 29 (32) 35 (37) 40, p9 (9) 11 (11) 11 (13) 13, k to end.

Round 12: K2tog, work front sts according to established pattern to 3 sts before m A, ssk, k1, sm A, k1, k2tog, k to purl sts, kfbf next 9 (9) 11 (11) 11 (13) 13 sts, k to 4 sts before end, ssk, k2. [4 sts decreased and 18 (18) 22 (22) 22 (26) 26 sts increased]

Round 13: Work front sts according to established pattern, sm A, k to end.

Round 14: As round 1. [4 sts decreased]

Repeat last two rounds 3 more times. = [12 sts decreased]

At this point there should be 112 (124) 140 (152) 164 (180) 192 sts on the needles: 47 (53) 59 (65) 71 (77) 83 sts for front and 65 (71) 81 (87) 93 (103) 109 sts for back.

Work 10 rounds straight in established pattern.



Next Round: LLI, work front sts according to established pattern to 1 st before m A, RLI, k1, sm A, k1, LLI, k to 2 sts before end, RLI, k2. [4 sts increased]

Next 9 Rounds: Work front sts in established pattern, sm A, k to end.

Repeat last 10 rounds 4 more times. [16 sts increased]

At this point there should be 132 (144) 160 (172) 184 (200) 212 sts on the needles: 57 (63) 69 (75) 81 (87) 93 sts for front and 75 (81) 91 (97) 103 (113) 119 sts for back.

Continue working straight in established pattern until body measures approx. 25 (28) 30 (33) 35 (38) 41 cm from the underarm or approx. 3 cm before desired length, ending with Round 20 or Round 30 of the Lace Pattern.

Row 1 – back shaping (RS): Work front sts according to established pattern, sm A, k to last 5 sts, w&t.

Row 2 – back shaping (WS): P to 5 sts before m A, w&t.

Row 3 – back shaping (RS): K to 5 sts before previously wrapped st, w&t.

Row 4 – back shaping (WS): P to 5 sts before previously wrapped st, w&t.

Repeat last two rows 4 (5) 6 (6) 7 (7) 8 more times; after last w&t knit to marker A and change to smaller needles.

Next Round: Knit (P/W).

Next Round: Purl.

Next Round: Knit.

Repeat last two rounds 4 more times. Bind off all sts purlwise.

Armbands (both alike)

With the RS facing and 3.5 mm dpn, pick up and knit 44 (48) 52 (56) 62 (66) 68 sts evenly along armhole edge.

Note: Though a specific number of stitches to pick up around the armhole is given, it does not matter if you end up with a slightly different number.

Round 1: Purl.

Round 2: Knit.

Repeat last two rounds 2 more times. Bind off all sts purlwise.

Neckband

With RS facing, slip back neckline sts from the holder to 3.5 mm dpn, then unravel and pick up 33 (35) 37 (39) 41 (43) 45 front neckline sts from provisional cast-on and slip them on the same needle. Attach the yarn.

Round 1: P35 (35) 37 (39) 41 (43) 45, pick up and purl 1 sts between front and back neckline sts, p35 (35) 37 (39) 41 (43) 45, pick up and purl 1 sts bet-

ween front and back neckline sts. [72 (72) 76 (80) 84 (88) 92 sts on the needles]

Round 2: Knit.

Round 3: Purl.

Round 4: Knit.

Bind off all sts purlwise.

Finishing

Weave in the ends. Gently wash the sweater and let it dry on a flat surface. Enjoy.

Pattern in Rows

Row 1: P1, yo, ssk, p1, yo, k3, ssk, k2tog, yo, p1, yo, ssk, k2tog, k3, yo, p1, yo, ssk, p1.

Row 2: K1, p2, k1, p1, yo, p2, p2tog, p2, k1, p2, ssp, p2, yo, p1, k1, p2, k1.

Row 3: P1, k2tog, yo, p1, k2, yo, k1, ssk, yo, ssk, p1, k2tog, yo, k2tog, k1, yo, k2, p1, k2tog, yo, p1.

Row 4: [K1, p2] twice, p1, yo, p2tog, p2, k1, p2, ssp, yo, p1, [p2, k1] twice.

Row 5: P1, yo, ssk, p1, k4, yo, ssk, k1, p1, k1, k2tog, yo, k4, p1, yo, ssk, p1.

Row 6: [K1, p2] twice, p3, yo, p2tog, k1, ssp, yo, p3, [p2, k1] twice.

Row 7: P1, k2tog, yo, p1, yo, k3, ssk, k2tog, yo, p1, yo, ssk, k2tog, k3, yo, p1, k2tog, yo, p1.

Row 8: K1, p2, k1, p1, yo, p2, p2tog, p2, k1, p2, ssp, p2, yo, p1, k1, p2, k1.

Row 9: P1, yo, ssk, p1, k2, yo, k1, ssk, yo, ssk, p1, k2tog, yo, k2tog, k1, yo, k2, p1, yo, ssk, p1.

Row 10: [K1, p2] twice, p1, yo, p2tog, p2, k1, p2, ssp, yo, p1, [p2, k1] twice.

Row 11: P1, k2tog, yo, p1, k4, yo, ssk, k1, p1, k1, k2tog, yo, k4, p1, k2tog, yo, p1.

Row 12: [K1, p2] twice, p3, yo, p2tog, k1, ssp, yo, p3, [p2, k1] twice.

Row 13: P1, yo, ssk, p1, yo, k3, ssk, k2tog, yo, p1, yo, ssk, k2tog, k3, yo, p1, yo, ssk, p1.

Row 14: K1, p2, k1, p1, yo, p2, p2tog, p2, k1, p2, ssp, p2, yo, p1, k1, p2, k1.

Row 15: P1, k2tog, yo, p1, k2, yo, k1, ssk, yo, ssk, p1, k2tog, yo, k2tog, k1, yo, k2, p1, k2tog, yo, p1.

Row 16: [K1, p2] twice, p1, yo, p2tog, p2, k1, p2, ssp, yo, p1, [p2, k1] twice.

Row 17: P1, yo, ssk, p1, k4, yo, ssk, k1, p1, k1, k2tog, yo, k4, p1, yo, ssk, p1.

Row 18: [K1, p2] twice, p3, yo, p2tog, k1, ssp, yo, p3, [p2, k1] twice.

Row 19: P1, k2tog, yo, p1, k5, k2tog, yo, p1, yo, ssk, k5, p1, k2tog, yo, p1.

Row 20: K1, p2, k1, [p7, k1] twice, p2, k1.

Row 21: P1, yo, ssk, p1, k4, k2tog, yo, k1, p1, k1, yo, ssk, k4, p1, yo, ssk, p1.

Row 22: K1, p2, k1, [p7, k1] twice, p2, k1.

Row 23: P1, k2tog, yo, p1, k3, [k2tog, yo] twice, p1, [yo, ssk] twice, k3, p1, k2tog, yo, p1.

Row 24: K1, p2, k1, [p7, k1] twice, p2, k1.

Row 25: P1, yo, ssk, p1, k2, [k2tog, yo] twice, k1, p1, k1, [yo, ssk] twice, k2, p1, yo, ssk, p1.

Row 26: K1, p2, k1, [p7, k1] twice, p2, k1.

Row 27: P1, k2tog, yo, p1, k1, [k2tog, yo] 3 times,

p1, [yo, ssk] 3 times, k1, p1, k2tog, yo, p1.

Row 28: K1, [[p2, k1, p2] twice, k1] twice.

Row 29: P1, yo, ssk, p1, [k2tog, yo] twice, p1, yo, ssk, p1, k2tog, yo, p1, yo, ssk, [yo, ssk, p1] twice.

Row 30: K1, [[p2, k1, p2] twice, k1] twice.

Pattern in Rounds

Round 1: P1, yo, ssk, p1, yo, k3, ssk, k2tog, yo, p1, yo, ssk, k2tog, k3, yo, p1, yo, ssk, p1.

Round 2: P1, k2, p1, k1, yo, k2, ssk, k2, p1, k2, k2tog, k2, yo, k1, p1, k2, p1.

Round 3: P1, k2tog, yo, p1, k2, yo, k1, ssk, yo, ssk, p1, k2tog, yo, k2tog, k1, yo, k2, p1, k2tog, yo, p1.

Round 4: [P1, k2] twice, k1, yo, ssk, k2, p1, k2, k2tog, yo, k1, [k2, p1] twice.

Round 5: P1, yo, ssk, p1, k4, yo, ssk, k1, p1, k1, k2tog, yo, k4, p1, yo, ssk, p1.

Round 6: [P1, k2] twice, k3, yo, ssk, p1, k2tog, yo, k3, [k2, p1] twice.

Round 7: P1, k2tog, yo, p1, yo, k3, ssk, k2tog, yo, p1, yo, ssk, k2tog, k3, yo, p1, k2tog, yo, p1.

Round 8: P1, k2, p1, k1, yo, k2, ssk, k2, p1, k2, k2tog, k2, yo, k1, p1, k2, p1.

Round 9: P1, yo, ssk, p1, k2, yo, k1, ssk, yo, ssk, p1, k2tog, yo, k2tog, k1, yo, k2, p1, yo, ssk, p1.

Round 10: [P1, k2] twice, k1, yo, ssk, k2, p1, k2, k2tog, yo, k1, [k2, p1] twice.

Round 11: P1, k2tog, yo, p1, k4, yo, ssk, k1, p1, k1, k2tog, yo, k4, p1, k2tog, yo, p1.

Round 12: [P1, k2] twice, k3, yo, ssk, p1, k2tog, yo, k3, [k2, p1] twice.

Round 13: P1, yo, ssk, p1, yo, k3, ssk, k2tog, yo, p1, yo, ssk, k2tog, k3, yo, p1, yo, ssk, p1.

Round 14: P1, k2, p1, k1, yo, k2, ssk, k2, p1, k2, k2tog, k2, yo, k1, p1, k2, p1.

Round 15: P1, k2tog, yo, p1, k2, yo, k1, ssk, yo, ssk, p1, k2tog, yo, k2tog, k1, yo, k2, p1, k2tog, yo, p1.

Round 16: [P1, k2] twice, k1, yo, ssk, k2, p1, k2, k2tog, yo, k1, [k2, p1] twice.

Round 17: P1, yo, ssk, p1, k4, yo, ssk, k1, p1, k1, k2tog, yo, k4, p1, yo, ssk, p1.

Round 18: [P1, k2] twice, k3, yo, ssk, p1, k2tog, yo, k3, [k2, p1] twice.

Round 19: P1, k2tog, yo, p1, k5, k2tog, yo, p1, yo, ssk, k5, p1, k2tog, yo, p1.

Round 20: P1, k2, p1, [k7, p1] twice, k2, p1.

Round 21: P1, yo, ssk, p1, k4, k2tog, yo, k1, p1, k1, yo, ssk, k4, p1, yo, ssk, p1.

Round 22: P1, k2, p1, [k7, p1] twice, k2, p1.

Round 23: P1, k2tog, yo, p1, k3, [k2tog, yo] twice, p1, [yo, ssk] twice, k3, p1, k2tog, yo, p1.

Round 24: P1, k2, p1, [k7, p1] twice, k2, p1.

Round 25: P1, yo, ssk, p1, k2, [k2tog, yo] twice, k1, p1, k1, [yo, ssk] twice, k2, p1, yo, ssk, p1.

Round 26: P1, k2, p1, [k7, p1] twice, k2, p1.

Round 27: P1, k2tog, yo, p1, k1, [k2tog, yo] 3 times, p1, [yo, ssk] 3 times, k1, p1, k2tog, yo, p1.

Round 28: P1, [[k2, p1, k2] twice, p1] twice.

Round 29: P1, yo, ssk, p1, [k2tog, yo] twice, p1, yo, ssk, p1, k2tog, yo, p1, yo, ssk, [yo, ssk, p1] twice.

Round 30: P1, [[k2, p1, k2] twice, p1] twice.