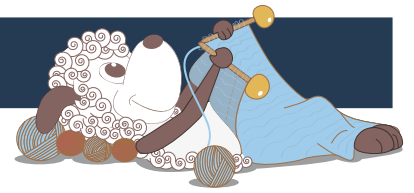


Cascada - a short sleeved tunic



Design: Hanna Maciejewska

A gorgeous tunic with a lovely lace pattern down the back, inspired by the cascading water of a waterfall. The tunic is worked from the top down, and is completely seamless.

1. English edition - August 2015 © Filcolana A/S

Materials

200 (220) 250 (290) 340 (400) 460g Indiecita by Filcolana (50g/ 165 meters, 100% Alpaca)
Circular needle or DPNs 4 mm
Circular needle or DPNs 4.5 mm
2 stitch markers
2 (2) 2 (3) 3 (3) 3 decorative buttons
1 wool needle

Sizes

92 cl/2 years (104 cl/4 years) 116 cl/6 years (128 cl/8 years) 140 cl/10 years (152 cl/12 years) 160 cl/14 years

The model in the photo is size 116 cl / 6 years in color 808 (Aqua Mist).

Measurements

Chest: 54 (58) 64 (68) 72 (76) 80 cm
Length: 43.5 (48) 52 (56.5) 61 (61) 69 cm

Gauge

17 sts and 27 rows in stockinette stitch on 4.5 mm needles = 10 x 10 cm WITH TWO STRANDS OF YARN HELD TOGETHER.

Abbreviations

Approx. = approximately



k2tog: knit two sts together

m: marker

m1p: make one purlwise = with left needle tip, lift strand between last knitted stitch and first stitch on left needle, from back to front and purl lifted loop

pm: place marker

RS: right side

ssk: slip two stitches, one at a time as if to knit and knit them together through the back loops

sm: slip marker

st/s: stitch/stitches

WS: wrong side

w&t (Wrap & Turn): Short rows - bring the yarn to the front of your work, slip the next stitch purlwise on the right-hand needle, bring the yarn to the back of your work around the slipped stitch and slip stitch back to the left-hand needle. Turn work to begin working back in the other direction.

yo: yarn over

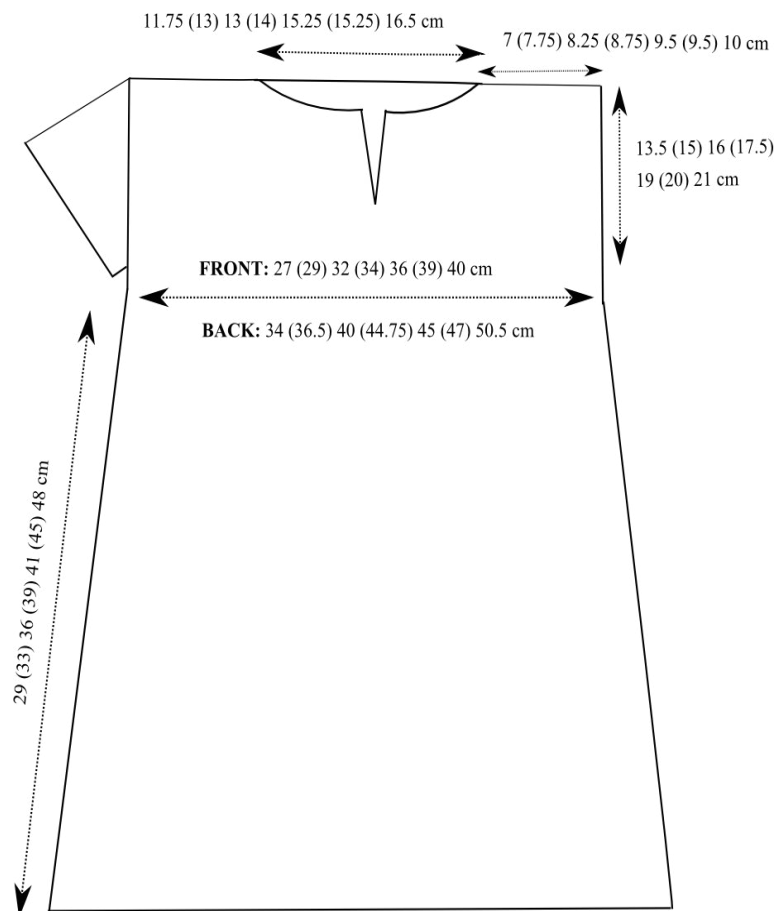
Direction of knitting

"Cascada" is knit top down, completely seamlessly. First, you knit both fronts from the shoulder line to the armhole, then carefully pick up the provisional cast on stitches at the shoulders and work the back down to the armhole. At that point you join all pieces together and continue knitting down. After the body is

Technique: Provisional cast-on

Crochet a row of chain stitches in a contrasting yarn (later to be removed). The row needs to be 5-10 chain sts longer than the required number of cast on stitches

Pick up and knit the required number of cast on stitches using the project yarn. The stitches are picked up from under the third leg of the chain stitch - ie. the little "bump" behind the chain.



done, you pick up sts along the armhole to work the sleeves.

Left front

Using 4.5 mm needles and your favorite provisional cast-on method (or see the box on page 2 for a suggestion), cast on 12 (13) 14 (15) 16 (16) 17 sts.

Set up row (WS): Purl.

Row 1 (RS): Knit.

Row 2 (WS): Purl.

Row 3 (RS): Knit.

Neckline shaping

Row 4 (WS): Purl to end, cast on 1 st.

Row 5 (RS): Knit.

Row 6 (WS): Purl to end, cast on 1 st.

Row 7 (RS): Knit.

Row 8 (WS): Purl to end, cast on 1 st.

Row 9 (RS): Knit.

Row 10 (WS): Purl to end, cast on 3 (3) 3 (4) 4 (4) 4 sts.

Row 11 (RS): Knit.

Row 12 (WS): Purl to end, cast on 6 (7) 7 (7) 8 (8) 9 sts. [24 (26) 27 (29) 31 (31) 33 sts on the needles]

Row 13 (RS): K4, pm, knit.

Row 14 and all WS rows unless otherwise stated: Purl to last 4 sts, sm, k4.

Repeat last two rows 7 (7) 7 (11) 11 (11) 11 more times. End with a WS row, cut yarn and place all sts on holder.

Right front

Using 4.5 mm needles and provisional cast-on method, cast on 12 (13) 14 (15) 16 (16) 17 sts.

Set up row (WS): Purl.

Row 1 (RS): Knit.

Row 2 (WS): Purl.

Neckline shaping

Row 3 (RS): Knit to end, cast on 1 st.

Row 4 (WS): Purl.

Row 5 (RS): Knit to end, cast on 1 st.

Row 6 (WS): Purl.

Row 7 (RS): Knit to end, cast on 1 st.

Row 8 (WS): Purl.

Row 9 (RS): Knit to end, cast on 3 (3) 3 (4) 4 (4) 4 sts.

Row 10 (WS): Purl.

Row 11 (RS): Knit to end, cast on 6 (7) 7 (7) 8 (8) 9 sts. [24 (26) 27 (29) 31 (31) 33 sts on the needles]

Row 12 (WS): K4, pm, purl to end.

Row 13 (RS): Knit.

Row 14 and all WS rows unless otherwise stated: K to m, sm, purl to end.

Row 15 (RS): Knit to m, sm, k2tog, yo, k2.

Rows 17, 19, and 21 (RS): Knit.

Row 23: As row 15.

Rows 25 and 27: Knit.

Sizes – (–) – (8 years) 10 years (12 years) 14 years only:

Row 29 (RS): Knit.

Row 31: As row 15.

Rows 33 and 35: Knit.

All sizes

End with a WS row, do not cut yarn.

Joining fronts

Slip stitches of the left front section from the waste yarn or the stitch holder to spare needle.

Row 1 (RS): Knit right front sts to m, then place remaining right front sts on the top of the first 4 left front sts. You will have two needles on top of each other: top needle with 4 right front sts, and bottom needle with 4 left front sts. [Ssk 1 st of the right front with 1 st of the left front] 4 times, then knit remaining sts of the left front from the spare needle. [44 (48) 50 (54) 58 (58) 62 sts on the needles]

Next row (WS): Purl.

Next row (RS): Knit.

Repeat last two rows until front measures approx. 13.5 (15) 16 (17.5) 19 (20) 21 cm from the cast on ending with a WS row. Cut yarn and place all sts on the holder.

Back

With RS facing, carefully remove all sts of provisional cast-on and place them on 4.5 mm needles. Attach the yarn.

Cascade pattern

		○	↘	15
	○	↘		13
○	↘			11
				9
↘	○			7
	↘	○		5
		↘	○	3
				1

Stitches

- k
- yo
- ↘ k2tog
- ↙ ssk

Row/Round 1: K4.

Row/Round 2 and all even rows/rounds: Knit the knit sts and purl the purl sts as they face you, knit yo's on RS and purl yo's on WS..

Row/Round 3: Yo, ssk, k2.

Row/Round 5: K1, yo, ssk, k1.

Row/Round 7: K2, yo, ssk.

Row/Round 9: K4.

Row/Round 11: K2, k2tog, yo.

Row/Round 13: K1, k2tog, yo, k1.

Row/Round 15: K2tog, yo, k2.

Set up row (WS): P12 (13) 14 (15) 16 (16) 17, then take a piece of waste yarn and, using working yarn and working needles, provisionally cast on 20 (22) 22 (24) 26 (26) 28 sts, (back collar), p to end. [44 (48) 50 (54) 58 (58) 62 sts on the needles]

Row 1 – first pattern repeat (RS): P2 (4) 2 (4) 3 (3) 2, *work row 1 of the Cascade Pattern, p2; repeat from * to 0 (2) 0 (2) 1 (1) 0 st/s before end, p0 (2) 0 (2) 1 (1) 0. Please refer to the chart or written instructions below.

Row 2 and all WS unless otherwise stated: Knit the knit sts and purl the purl sts as they face you, purl yo's.

Rows 3 – 16: P2 (4) 2 (4) 3 (3) 2, *work appropriate rows of the Cascade Pattern, p2; repeat from * to 0 (2) 0 (2) 1 (1) 0 st before end, p0 (2) 0 (2) 1 (1) 0.

Row 1 – second pattern repeat (RS): P2 (4) 2 (4) 3 (3) 2, *work row 1 of the Cascade Pattern, p1, m1p, p1; repeat from * to last 6 (8) 6 (8) 7 (7) 6 sts before end, work row 1 of the Cascade Pattern, p2 (4) 2 (4) 3 (3) 2. [6 (6) 7 (7) 8 (8) 9 sts increased; 50 (54) 57 (61) 66 (66) 71 sts on the needles]

Rows 3 – 16: P2 (4) 2 (4) 3 (3) 2, * work appropriate rows of the Cascade Pattern, p3; repeat from * to last 6 (8) 6 (8) 7 (7) 6 before end, sts, work appropriate row of the Cascade Pattern, p2 (4) 2 (4) 3 (3) 2.

Row 1 – third pattern repeat (RS): P2 (4) 2 (4) 3 (3) 2, *work row 1 of the Cascade Pattern, p2, m1p, p1; repeat from * to last 6 (8) 6 (8) 7 (7) 6 sts before end, work row 1 of the Cascade Pattern, p2 (4) 2 (4) 3 (3) 2. [6 (6) 7 (7) 8 (8) 9 sts increased; 56 (60) 64 (68) 74 (74) 80 sts on the needles]

Continue in established pattern, working appropriate rounds of the Cascade Pattern and increasing sts with each new pattern repeat, until work measures approx. 13.5 (15) 16 (17.5) 19 (20) 21 cm from the cast on. End with a WS row, do not cut yarn.

Body

With RS facing, slip stitches of the front section from waste yarn or stitch holder to a spare needle.

Round 1: Work back sts in established pattern, pm, cast on 2 (2) 4 (4) 4 (6) 6 sts (underarm), knit front sts, cast on 2 (2) 4 (4) 4 (6) 6 sts (underarm). Join in the round and place marker for the beginning of the round. [103 (112) 122 (130) 140 (144) 154 sts on the needles]

Round 2 and all even rounds unless otherwise stated: Knit the knit sts and purl the purl sts as they face you, knit yo's.

Round 3: Work back sts in established pattern, sm, knit to end.

Continue working in established pattern, repeating

Rows 1 – 16 of the Cascade Pattern and increasing sts with each new pattern repeat, until body measures approx. 27 (30) 33 (36) 39 (42) 45 cm from the underarm or approx. 3 cm before desired length, ending with Round 16 of the Cascade Pattern.

Change to 4 mm needles.

Next Round: Knit.

Next Round: Purl.

Repeat last two rounds 5 more time. Bind off all sts knitwise.

Sleeves (both alike)

The sleeves are worked by picking up stitches around the armholes and working short rows to shape a sleeve cap. Please note that the wraps are not picked up.

Right sleeve: With RS of the armhole facing, re-join the yarn at the top of the armhole where the shoulder seam is and, using 4.5 mm needles, –pick up and knit 19 (20) 21 (23) 25 (27) 28 sts along the front armhole to the underarm sts, then pick up and knit 2 (2) 4 (4) 4 (6) 6 underarm sts, then pick up and knit 19 (20) 21 (23) 25 (27) 28 sts along the back armhole. [40 (42) 46 (50) 54 (60) 62 sts]

You need to pick up approximately 1 st for every 2 rows except for 2 (2) 4 (4) 4 (6) 6 underarm sts where you will pick up 1 st for each st. Place marker at the top center of the armhole where the shoulder seam is.

Shape sleeve cap as follows:



Row 1 (RS): knit to 4 (5) 5 (6) 6 (7) 7 sts past marker, w&t.

Row 2 (WS): purl to 4 (5) 5 (6) 6 (7) 7 sts past marker, w&t.

Row 3: knit to 5 (6) 6 (7) 7 (8) 8 sts past marker, w&t.

Row 4: purl to 5 (6) 6 (7) 7 (8) 8 sts past marker, w&t.

Repeat the last two rows, each time making each w&t one st past the previous w&t. Work like this until all sts have been worked except the 2 (2) 4 (4) 4 (6) 6 underarm sts. End with a WS row. Turn work and knit all sts. Remove marker from the top center of the armhole and place marker for the beginning of the round.

Change to 4 mm needle.

Round 1: Knit.

Round 2: Purl.

Repeat last two rounds 3 more times. Bind off all sts knitwise.

Left sleeve: Knit as right sleeve, but pick up and knit sts along back armhole first, then pick up and knit underarm sts, then pick up and knit sts along front armhole.

Neckband

With RS facing, carefully remove provisional cast-on on the back neckline sts and place it on 4 mm needle. Attach the yarn.

Beginning at the top of the right front and using 4 mm needles pick up and knit 22 (22) 22 (23) 24 (24) 25 sts across right front, 20 (22) 22 (24) 26 (26) 28 sts from the holder across back neck, and 22 (22) 22 (23) 24 (24) 25 sts across left front. [64 (66) 66 (70) 74 (74) 78 sts on the needles]

Note: Though a specific number of stitches to pick up around the neckband is given, it does not matter if you end up with a slightly different number.

Row 1 (WS): Knit.

Row 2: Knit.

Row 3: Bind off all sts knitwise.

Finishing

Weave in the ends and sew in buttons. Gently wash the sweater and let it dry on a flat surface. Enjoy.