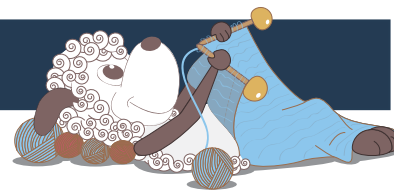


Daria - a generously sized lace shawl



Design: Hanna Maciejewska

"Daria" is a generously sized triangle-shaped shawl knit with three colors in a combination of an easy-to memorize lace pattern and garter stitch.

1. English edition - January 2017 © Filcolana A/S

Materials

Indiecita by Filcolana:

Color 1 (C1): 300 g in color 319

Color 2 (C2): 50 g in color 229

Color 3 (C3): 100 g in color 230

3,5 mm circular needle, 100 cm long

Sizes

One size

Measurements

Width: 276 cm

Length at center: 75 cm

Gauge

18 sts and 38 rows in garter stitch after blocking = 10 x 10 cm.

Special abbreviations

Kfb: Knit into the front of the stitch, leaving the stitch on the needle, then knit into the back.

Kfbf: Knit into the front of the stitch, leaving the stitch on the needle, then knit into the back, and then front of the same stitch.

Yo twice = RS: yarn over two times; WS: knit, purl into double yo's.

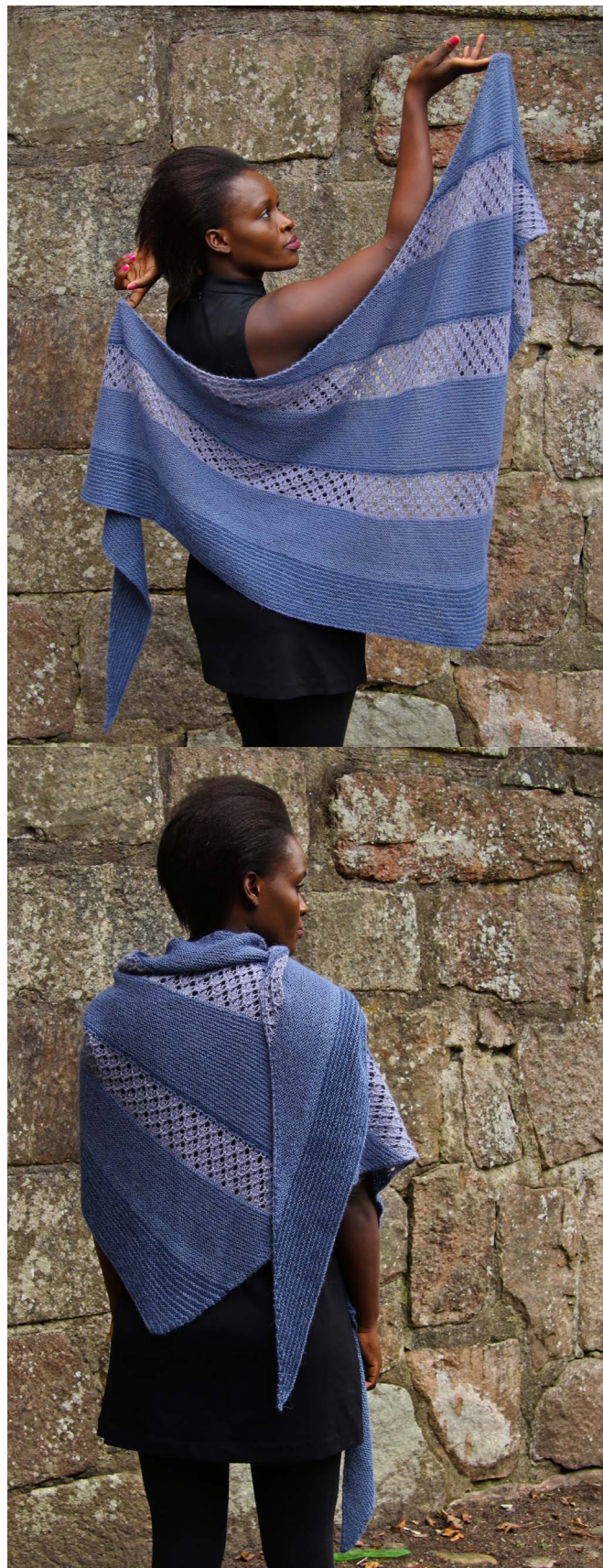
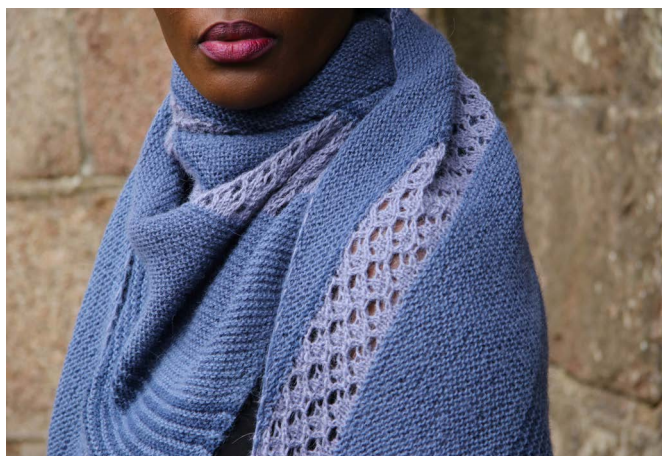
Directions for knitting

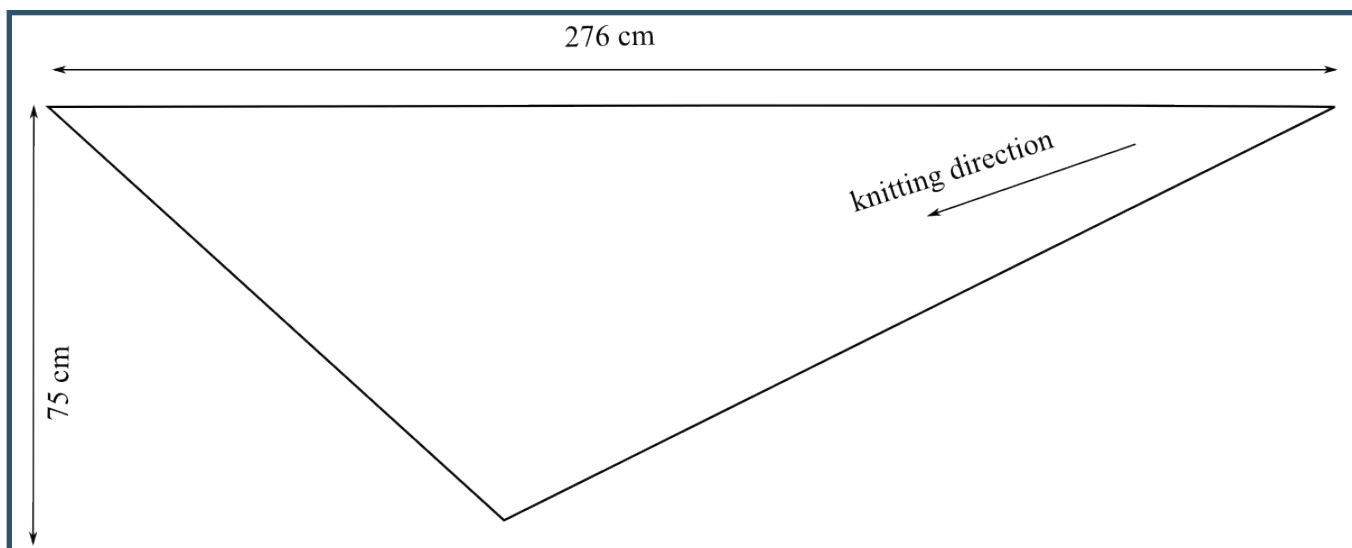
This shawl is knit from one corner to the widest part.

Set up section

Using C1, cast on 3 sts.

Row 1 (RS): Kfb, knit to end. [1 stitch increased]





Row 2 (WS): Knit to end.
 Row 3: Kfbf, knit to end. [2 sts increased]
 Row 4: Knit to end.
 Row 5: Kfbf, knit to last 3 sts, k2tog, k1. [1 stitch increased]
 Row 6: Knit to end.
 Row 7: Kfbf, knit to end. [2 sts increased; 9 sts on the needles].
 Row 8: Knit to end.

BASIC PATTERN

Row 1 (RS): Kfbf, knit to last 3 sts, k2tog, k1. [1 stitch increased]
 Row 2 (WS): Knit to end.
 Row 3: Kfbf, knit to end. [2 sts increased]
 Row 4: Knit to end.
 Row 5: Kfbf, knit to last 3 sts, k2tog, k1. [1 stitch increased]
 Row 6: Knit to end.
 Row 7: Kfbf, knit to end. [2 sts increased].
 Row 8: Knit to end.

These 8 rows form the Basic Pattern. Repeat Rows 1 – 8 of the Basic Pattern until there are 63 sts on the needles.

Section 1

Continue with C1 and work Rows 1 – 4 of Basic Pattern [3 sts increased].
 Change to C2 and work Rows 5 and 6 of Basic Pattern [1 st increased].
 Change to C1 and work Rows 7 and 8 of Basic Pattern [2 sts increased].

Change to C3 and work Lace Pattern (se page 3) [12 sts increased].

Change to C1 and work Rows 1 – 8 of Basic Pattern 6 times. [a total of 36 sts increased]



Lace pattern

Stitches

□ RS: k; WS: p

○ yo

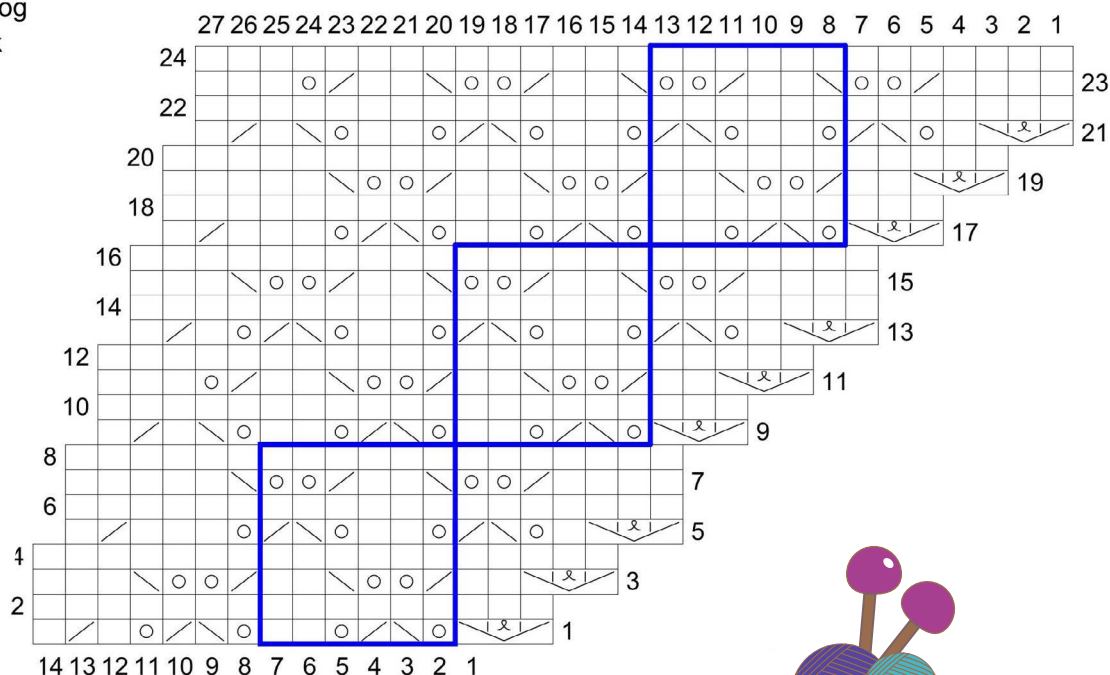
▤ kfbf

▧ k2tog

▨ ssk

Borders

— pattern repeat



Row 1: Kfbf, *yo, ssk, k2tog, yo, k2*; repeat from * to * to last 8 sts, yo, ssk, k2tog, yo, k1, k2tog, k1.

Row 2 and all WS rows: Purl to end.

Row 3: Kfbf, k2, *k2tog, yo twice, ssk, k2*; repeat from * to * to last st, k1.

Row 5: Kfbf, k1, yo, ssk, k2tog, *yo, k2, yo, ssk, k2tog*; repeat from * to * to last 6 sts, yo, k3, k2tog, k1.

Row 7: K4, k2tog, yo twice, *ssk, k2, k2tog, yo twice*; repeat from * to * to last 7 sts, ssk, k5.

Row 9: Kfbf, *yo, ssk, k2tog, yo, k2*; repeat from * to * to last 6 sts, yo, ssk, k1, k2tog, k1.

Row 11: Kfbf, k2, *k2tog, yo twice, ssk, k2*; repeat from * to * to last 5 sts, k2tog, yo, k3.

Row 13: Kfbf, k1, yo, ssk, k2tog, *yo, k2, yo, ssk, k2tog*; repeat from * to * to last 4 sts, yo, k1, k2tog, k1.

Row 15: K4, k2tog, yo twice, *ssk, k2, k2tog, yo twice*; repeat from * to * to last 5 sts, ssk, k3.

Row 17: Kfbf, *yo, ssk, k2tog, yo, k2*; repeat from * to * to last 4 sts, k1, k2tog, k1.

Row 19: Kfbf, k2, *k2tog, yo twice, ssk, k2*; repeat from * to * to last 3 sts, k3.

Row 21: Kfbf, k1, yo, ssk, k2tog, *yo, k2, yo, ssk, k2tog*; repeat from * to * to last 8 sts, yo, k2, yo, ssk, k1, k2tog, k1.

Row 23: K4, k2tog, yo twice, *ssk, k2, k2tog, yo twice*; repeat from * to * to last 9 sts, ssk, k2, k2tog, yo, k3.



Repeat Section 1 three more times [279 sts on the needles].

Section 2

Change to C2 and work Rows 1 and 2 of Basic Pattern.

Change to C1 and work Rows 3 and 4 of Basic Pattern.

Change to C2 and work Rows 5 and 6 of Basic Pattern.

Change to C1 and work Rows 7 and 8 of Basic Pattern.

Repeat last 8 rows 5 more times. [315 sts on the needles].

Finishing

Cast off all sts knit-wise. Weave in all ends and block to measurements.

