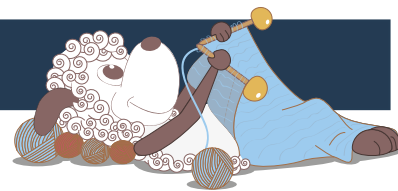


Falochron - a lovely three coloured lace shawl



Design: Hanna Maciejewska

"Falochron" is Polish for the various wave breaking structures ones sees at the shore. This semi-circular to crescent-shaped shawl is designed for 3 colors of Arwetta. It is knit top down, mostly in garter st, with a wide two-colored slip-stitch border featuring a very easy lace pattern. Thanks to the combination of texture and color, it's fun to knit, and provides an interesting focal point for all who admire you wearing it.

1. English edition - August 2016 © Filcolana A/S

Materials

Arwetta Classic by Filcolana:

Color 1 (C1): 100 g in color 954 (Light Grey (mélange))

Color 2 (C2): 50 g in color 990 (Ragsock (mouliné))

Color 3 (C3): 100 g in color 955 (Medium Grey (mélange))

3,5 mm (100 cm) circular needle

Tapestry needle

Cable needle

Size

One size

Measurements

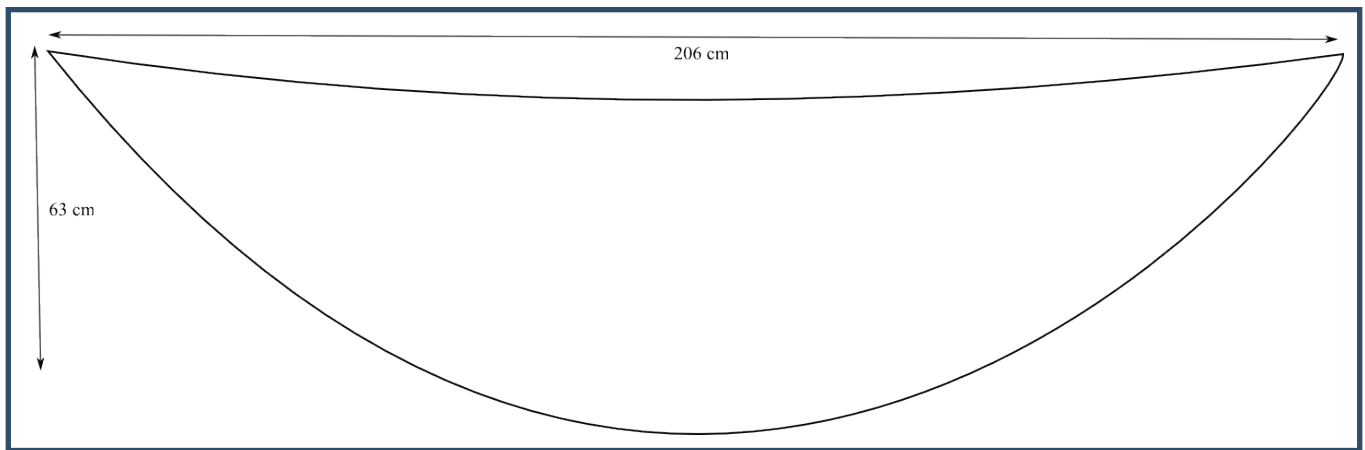
Length (outer edge): 206 cm

depth (center): 63 cm

Gauge

18 sts and 38 rows in garter stitch after blocking = 10 x 10 cm.





Special abbreviations

EL (elongated stitch): Knit 1 wrapping yarn twice; drop extra wraps on next row.

M1L (increase): From the front, lift the horizontal strand between stitches with the left needle and knit through the back loop.

M1LP (increase): From the front, lift the horizontal strand between stitches with the left needle and purl through the back loop.

M1R (increase): From the back, lift the horizontal strand between stitches with the left needle and knit through the front loop.

M1RP (increase): From the back, lift the horizontal strand between stitches with the left needle and purl through the front loop.

S2tog-k1-p2sso (double decrease): Slip 2 stitches together knitwise, knit 1, then pass slipped stitches over.

Directions for knitting

The shawl is worked from the central point at the neck down to the border. Both patterns used in the border are charted.

Shawl

Using C1, cast on 3 sts and knit 36 rows.

At the end of Row 36 do not turn work, but rotate piece 90 degrees clockwise and pick up and knit 18 sts along the edge. You should pick up one st in each garter st ridge.

Rotate piece 90 degrees clockwise and pick up and knit 3 sts along cast on edge. You should pick up 1 st in each cast on st [24 sts].

Set up Section

Row 1 (RS): K3, M1R, [k2, M1R] to last 5 sts, k2, M1L, k3. [10 sts increased; 34 sts]

Row 2 (WS): K3, M1R, [k4, M1R] to last 7 sts, k4, M1L, k3. [8 sts increased; 42 sts]

Row 3: K3, M1R, [k4, M1R] to last 7 sts, k4, M1L, k3. [10 sts increased; 52 sts]

Row 4: K6, M1R, [k5, M1R] to last 11 sts, k5, M1L, k6. [9 sts increased; 61 sts]

Section 1

Continue with C1.

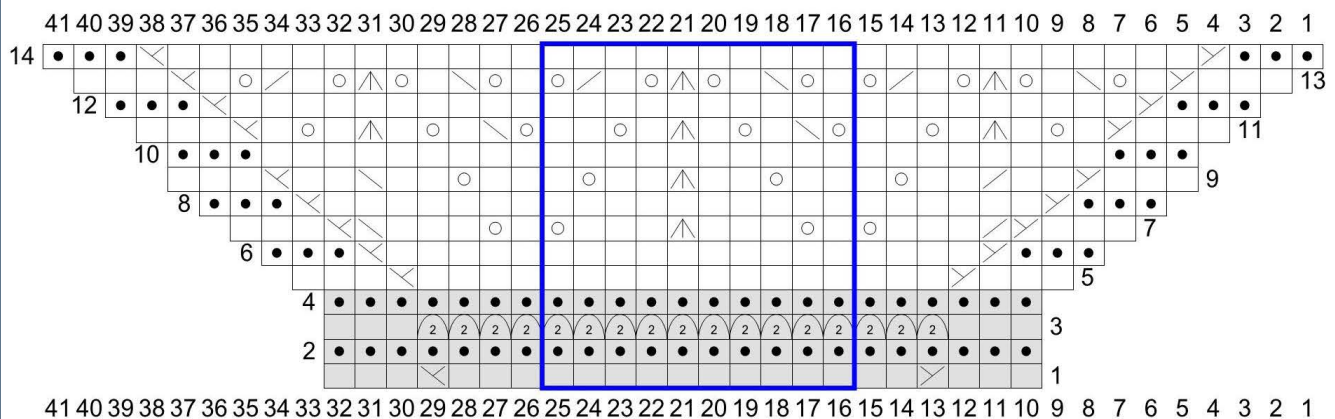
Row 1 (RS): K3, M1R, k to last 3 sts, M1L, k3. [2 sts increased]

Row 2 (WS): K to end.

Rows 3 – 6: Work as Row 1. [8 sts increased; 71 sts]
Repeat Rows 1 – 6 until there are 281 sts on the needles. [210 sts increased]



Lace pattern



- RS: k; WS: p
- WS: k
- yo
- RS: M1R; WS: M1RP
- RS: M1L; WS: M1LP
- k2tog
- ssk
- s2tog-k1-p2sso
- EL
- Pattern Repeat

Row 1: K3, M1R, k to last 3 sts, M1L, k3. [2 sts increased]
 Row 2: K to end.
 Row 3: K3, EL to last 3 sts, k3.
 Row 4: K to end.
 Row 5: K3, M1R, k to last 3 sts, M1L, k3. [2 sts increased]
 Row 6: K3, M1LP, p to last 3 sts, M1RP, k3. [2 sts increased]
 Row 7: K3, M1R, k2tog, k3, yo, *k1, yo, k3, s2tog-k1-p2sso, k3, yo*. Repeat from * to * to last 9 sts, k1, yo, k3, ssk, M1L, k3. [2 sts increased]
 Row 8: K3, M1LP, p to last 3 sts, M1RP, k3. [2 sts increased]
 Row 9: K3, M1R, k2, k2tog, k2, yo, k1, *k2, yo, k2, s2tog-k1-p2sso, k2, yo, k1*. Repeat from * to * to last 11 sts, k2, yo, k2, ssk, k2, M1L, k3. [2 sts increased]
 Row 10: K3, p to last 3 sts, k3.
 Row 11: K3, M1R, k1, yo, k1, s2tog-k1-p2sso, k1, yo, k2, *yo, ssk, k1, yo, k1, s2tog-k1-p2sso, k1, yo, k2*. Repeat from * to * to last 12 sts, yo, ssk, k1, yo, k1, s2tog-k1-p2sso, k1, yo, k1, M1L, k3. [2 sts increased]
 Row 12: K3, M1LP, p to last 3 sts, M1RP, k3. [2 sts increased]
 Row 13: K3, M1R, k1, yo, ssk, k1, yo, s2tog-k1-p2sso, yo, k1, k2tog, yo, *k1, yo, ssk, k1, yo, s2tog-k1-p2sso, yo, k1, k2tog, yo; rep. from * to last 4 sts, k1, M1L, k3. [2 sts inc]
 Row 14: K3, M1LP, p to last 3 sts, M1RP, k3. [2 sts inc]

Section 2

Change to C2.

Rows 1 – 4: Work Rows 1 – 4 of chart or written pattern (please see page 3). [2 sts increased]

Change to C3.

Rows 5 – 14: Work Rows 5 – 14 of chart or written pattern. [18 sts increased]

Repeat Section 2 four more times. [80 sts increased; 381 sts]

Finishing

Bind off all sts, weave in all ends and block shawl to measurements.

