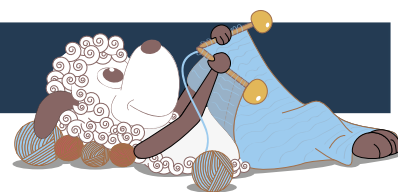


Le petit Chaperon Rouge



Design: Hanne Pjedsted

The kids' favorite hoodie - worked completely crosswise! The sweater is worked in seed stitch in 3 different shades of Arwetta Classic and has a whimsical little finishing detail on the hood.

1st English edition - March 2014, © Filcolana A/S
English translation: Signe S. Simonsen

Materials

Arwetta Classic by Filcolana in 3 shades; here: color 138 (red), color 140 (blood red) and 512 (multicolored red).

Size 1 years: 100 g of color 138, 50 g of color 140 and 50 g of color 512

Size 2 years: 100 g of color 138, 100 g of color 140 and 100 g of color 512

Size 4 years: 150 g of color 138, 100 g of color 140 and 100 g of color 512

Size 6 years: 150 g of color 138, 150 g of color 140 and 150 g of color 512

3 mm circular needle (60 cm long), an extra needle or stitch holder, and two 3 mm double pointed needles (for the finishing detail on the hood)

Stitch markers or loops of yarn

4 buttons

Sizes

1 (2) 4 (6) years

Measurements

Passer til brystvidde: 54 (58) 64 (68) cm

Sweater, chest: 62 (66) 72 (76) cm

Sleeve length:

23 (26) 30 (34) cm incl. the turn up cuff

Total length: 30 (32) 34 (37) cm

Gauge

27 sts and 54 rows in seed stitch on 3 mm needles = 10 cm x 10 cm.

Abbreviations

M1: Make 1. Increase one stitch by lifting the chain between sts onto the left needle and knitting it through the back loop.

Edge stitches (chained):

All RS rows: Knit the first 2 and last 2 sts of the row.

All WS rows: Slip the first 2 and last 2 sts purl-wise with the yarn in front.

Seed stitch in 3 colors

The pattern is worked over an odd number of stitches
Row 1: color 138 (red): *k1, p1*. Repeat from * to * until the last st. End with k1.

Row 2: color 140 (blood red): Work as Row 1.

Row 3: color 512 (multicolored red): Work as Row 1.
Work these 3 pattern rows throughout.



Directions for knitting

The sweater is worked from cuff to center back in two halves (mirrored at the neck edge, naturally), so all edges look the same. The two sides are then joined. A lovely chained edge is worked along all open edges. The stitches for the hood are picked up along the neck edge and the hood is knit and then closed off at the top. The sleeve seams and side seams are then sewn up.

Left sleeve and back/front to neck

Cast on 39 (41) 43 (45) sts using color 138 and 3mm needles. Knit 3 rows. Continue in seed stitch in 3 colors for 4 (4,5) 5 (5,5) cm.

Increase row (RS): K1, M1, work until there is 1 st left on the needle, M1, k1.

Repeat the increase row on every 8th (alternately 8th and 10th) 10th (10th) row, another 10 (11) 12 (14) times

61 (65) 69 (75) sts on the needle.

Work straight in pattern until the sleeve measures 23 (26) 30 (34) cm. Cast on 46 (50) 56 (62) sts at either end of the work for the side seams of the body.

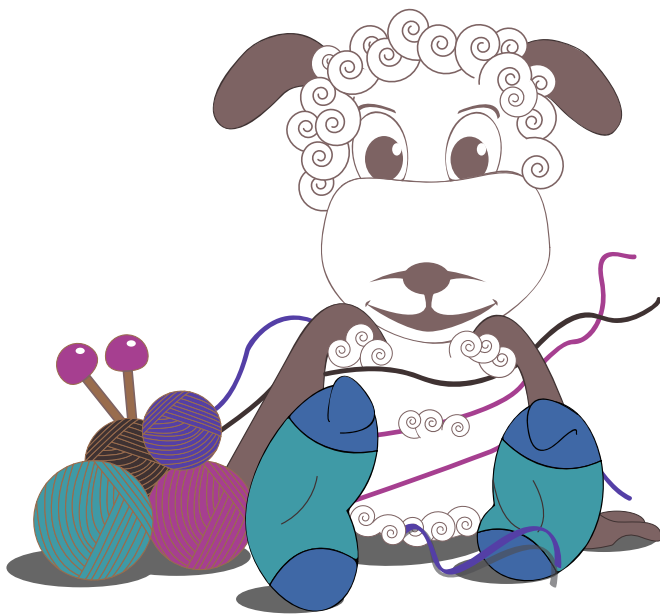
153 (165) 181 (199) sts on the needle.

Work straight in pattern - working the chained edges at both ends!

When the work measures 9,5 (10) 11 (12) cm from the side seam, the work is divided down the center for the neck edge (place a marker in the middle of the row) and each side is worked separately.

Left back

Bind off 2 (2) 3 (3) sts for the neck edge, then bind off 1 st a total of 2 (2) 2 (3) times. Work straight in the seed stitch pattern (do not work the chained edge at the neck edge), until the back measures 15 (16) 17,5 (18,5) cm from the side seam. End on row 1 of the pattern (color 138), then knit 2 more rows in the



The perfect buttonhole

Work to where the buttonhole is to be worked

- Slip 1 st purl-wise with the yarn in front.

Bring the yarn to the back, once the stitch has been slipped.

- Slip 1 st purl-wise (leave the working yarn to hang where it is!)

- Pass the first stitch over the second = 1 stitch has been bound off.

- Slip 1 st purl-wise, pass the previous stitch over the new stitch. Continue to bind off in this way until you have bound off the number of stitches the buttonhole consists of.

- Slip the last stitch back on the left needle.

Turn the work.

- Using the knitted cast-on (between stitches), cast on 1 stitch MORE than the number of stitches bound off. Turn the work.

- Slip the last cast-on stitch to the left needle with the yarn in front.

- Knit 2 stitches together through the back loop.

With wonderful inspiration from Elisabeth Zimmermann and Britt Marie Christoffersson, and assistance by knitter from Langeland, who acted as testers for me.

same color (138) - the first row is a RS row. Let the stitches rest on an extra needle.

Left front

Bind off 4 sts for the neck edge, then bind off 2 sts, then 1 st a total of 1 (1) 2 (2) times. Work straight in the seed stitch pattern (do not work the chained edge at the neck edge), until the back measures 14 (15) 16,5 (17,5) cm from the side seam. Continue in pattern and work the chained edge at the neck edge as well until the work measures 16 (17) 18,5 (19,5) cm. End on row 1 of the pattern (color 138) then knit 2 more rows in the same color (138) - the first row is a RS row.

Bind off knit-wise loosely.

Right sleeve and back

Work as the left side to the neck. Divide the work down the middle and finish back and front separately.

The right side of the back is worked the same way as the left.

The right front is worked the same way as the left until the work measures 15 (16) 17,5 (18,5) cm from the side seam. Now 4 buttonholes are worked, starting from the neck edge: 2 edge sts, work 1 st, *bind off 5 sts, then work 8 (9) 10 (11) sts in pattern*. Repeat from * to * a total of 4 times. Work to end of row in

pattern.

Cast on 6 new stitches over where stitches were bound off on the previous row, then slip the last stitch back to the left needle and knit it together with the next stitch through the back loops (to avoid the elongated stitch at the edge of the buttonhole). Alternative the buttonholes can be worked as described in "The perfect buttonhole" (à la Elisabeth Zimmermann) - see above.

Continue in pattern until the work measures 16 (17) 18,5 (19,5) cm from the side seam. End on row 1 of the pattern (color 138) then knit 2 more rows in the same color (138) - the first row is a RS row. Bind off knit-wise loosely.

Joining and binding off mid back

Join and bind off the 2 sides of the back. Hold the two needles with each side of the back right sides together in your left hand. Knit the first st on the front needle together with the first stitch on the back needle, *knit the next st on the front needle together with the next st on the back needle, pass the first st on the right needle over the second st*. Repeat from * to * until all sts are bound off. This bind-off form a "chain" of bound off stitches down the center of the back.

Hood

Pick up and knit 35 (37 (39) 41 sts along each half of the neckline, and 1 st at the center back using color 138. Begin and end at the chained edge, approx. 2 cm from the front edges. 71 (75) 79 (83) sts on the needle.

Work in the seed stitch pattern and work the chained edge at both sides.

Place at each of the locations where the stitches of the body were split into front and back and another marker at the center back stitch.

Increase row (RS): Work to 1 st before the first shoulder marker, M1, k1, M1. Work to the center back st, M1, k1, M1, then work to the second shoulder marker and work another M1, k1, M1 (= 6 sts have been increased).

Repeat the increase row every 4th for a total of 6 times. 107 (111) 115 (119) sts on the needle. Then only work the increases at the center back st every 12th row a total of 5 (5) 6 (6) times = 117 (121) 127 (131) sts on the needle

Work straight in pattern until the hood measures 21,5 (22) 23,5) 25 cm. End on row 1 of the pattern (color 138) then knit 2 more rows in the same color (138) - the first row is a RS row.

Split the hood sts in two and knit them together to form the top of the hood the same way as mid back until there are 6 sts left on the needle. Turn the work and work for 3-4 cm over the 6 sts on the needle.

(Either work the sts in stockinette stitch and let it roll or as an purl i-cord using double-pointed needles).

Knit the stitches together 2 and 2, break the yarn and thread it through the remaining stitches on the needle.

Finishing

Weave in all ends. Sew up the side and sleeve seams from the RS using Kitchener stitch. Sew the 4 buttons onto the left front across from the buttonholes.

Wash the work in the washing machine on a 30 degree wool program and lay it flat to dry.