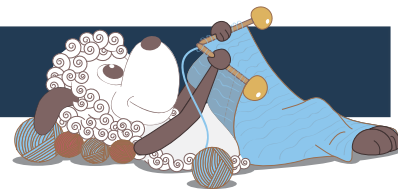


Cocoon - a classic, feminine sweater



Design: Hanne Rikken

Cocoon is a classic, feminine sweater with a casual fit and beautiful pattern panels that bring delicate spring blossoms to mind. This sweater is perfect for the cooler days of spring or for crisp summer evenings in the garden. Naturally, Cocoon has an elegant hint of glitter.

4th English edition - April 2020 © Filcolana A/S
English translation: Signe Strømgaard

Materials

MC

200 (200) 250 (250) g Saga by Filcolana in colour 951 (Light Grey melange)
and 150 (150) 175 (175) g Tilia by Filcolana in colour 336 (Latte)

CC1

100 g (all sizes) Saga by Filcolana in colour 953 (Charcoal melange)
and 50 (50) 50 (50) g Paia by Filcolana in colour 705 (Copper Shimmer)

CC2

50 g (all sizes) Saga by Filcolana in colour 302 (Ballet Slipper)
and 25 g Tilia by Filcolana in colour 336 (Latte)

3,5 mm circular needle, 40 and 80 cm

3 mm circular needle, 80 cm

3,5 mm double-pointed needles

Markers

Sizes

S (M) L (XL)

Measurements

Body, chest: (80-100) 100-110 (110-120) 120-130 cm



Sweater, chest: 120 (134) 146 (156) cm
 Total length: 60 (63) 65 (67) cm
 Length to armhole: 30 (32) 34 (36) cm
 Sleeve length to armhole: 36 (38) 38 (40) cm

Gauge

24 sts and 28 rows in stockinette stitch on a 3,5 mm needle = 10 x 10 cm

Special abbreviations

M1: Make 1. Increase one stitch by lifting the chain between sts onto the left meedle and knitting it through the back loop.

tbl: through the back loop

Special techniques

Short rows - GSR (German short rows): Work to where the turn needs to be, turn, then slip the first stitch purl-wise with the yarn held in front. Bring the working yarn up and over the needle and down on the other side, pulling hard enough on the yarn to make the stitch on the needle look like a double stitch (the 2 legs of the stitch are visible). Continue row as pattern describes.

When working across the stitch that looks like a double stitch, work it as 1 stitch, either knitting or purling the 2 legs together, as the pattern describes.

Directions for knitting

The sweater is worked from the top down. First the yoke is worked, then the stitches are divided for sleeves and body. The sleeves are placed on stitch holders, while the body is finished, then the sleeves are worked.

Read first

The sweater has a loose fit with extra diwdth in the yoke and deep armholes.

It is very important to maintain correct gauge across both the pattern and the stockinette stitch sections of the sweater. Adjust your needle size if required.

Cocoon is worked with two strands of yarn held together throughout both in the main colour (MC) and in the contrast colours (CC1 and CC2)

MC: Saga + Tilia.

CC1: Saga + Paia.

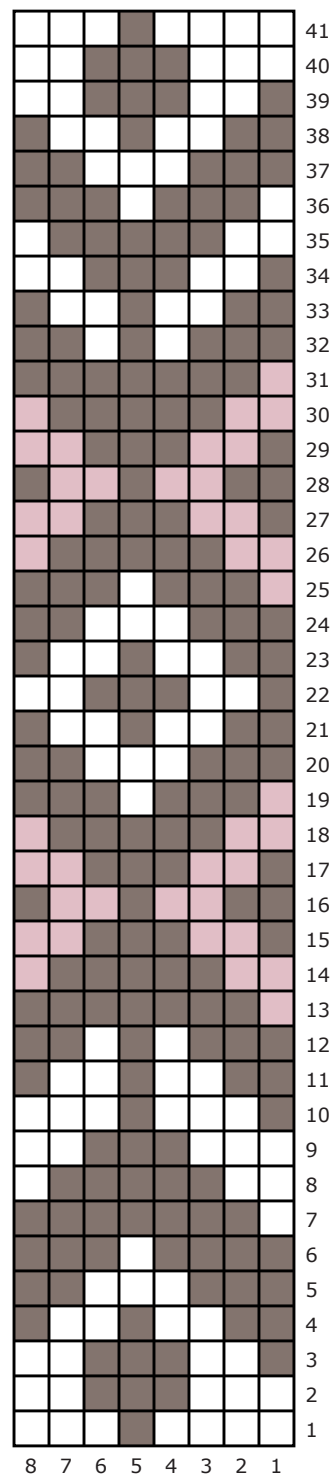
CC2: Saga + Tilia.

Yoke

Cast on 96 (104) 116 (116) sts on a 3,5 mm needle with MC. Join in the round and place a marker for the beginning of the round (mid back). Knit 1 round. Now work in corrugated rib as follows: *k2 tbl in CC1, p2 in MC*, repeat from * to * to end of round. Work a total of 10 (10) 12 (12) rounds of corrugated rib.

For at better fit short rows are now worked to raise the neck as follows:

Chart



MC
 CC1
 CC2

Break CC1 and continue I MC only.

Short row 1 (RS): K7, turn.

Short row 2: P14, turn.

Short row 3: Knit to 8 sts after the last RS turn, turn.

Short row 4: Purl to 8 sts after the last WS turn, turn.

Work Short row 3 and 4 2 more times.

Last short row: Knit to marker for beginning of round.

Knit 1 round.

Increase 12 (16) 16 (25) sts evenly across the next round. There are now a total of 108 (120) 132 (141) sts on the needle.

Knit 3 rounds.

Next round: *K3, M1*, repeat from * to * to end of round. There are now 144 (160) 175 (188) sts on the needle.

Knit 4 rounds.

Next round: *K4, M1*, repeat from * to * to end of round. There are now 180 (200) 220 (235) sts on the needle.

Knit 6 rounds.

Next round: *K5, M1*, repeat from * to * to end of round. There are now 216 (240) 264 (282) sts on the needle.

Knit 8 rounds.

Next round: *K6, M1*, repeat from * to * to end of round. There are now 252 (280) 308 (329) sts on the needle.

Knit 8 rounds.

Next round: *K7, M1*, repeat from * to * to end of round. There are now 288 (320) 352 (376) sts on the needle.

Knit 3 (3) 6 (10) rounds.

Now work all rows of the chart.

Then knit 12 rounds in MC.

Now divide the work for body and sleeves as follows: Knit 48 (52) 56 (62) sts (half back), place the next 48 (56) 64 (64) sts on a stitch holder (sleeve), cast on 16 new sts in extension of the sts on the needle, knit 96 (104) 112 (124) sts (front), place the next 48 (56) 64 (64) sts on a stitch holder (sleeve), cast on 16 new sts in extension of the sts on the needle, knit 48 (52) 56 (62) sts (half back).

Body

There are now 224 (240) 256 (280) sts on the needle.

Knit 12 rounds in MC, then work all rows of chart.

Work in MC in stockinette stitch until the work measures approx. 25 (26) 26 (28) cm from the armhole down, or desired length.

Change to a 3 mm needle and work 10 rounds of k2 tbl, p2 rib in MC. Knit 1 round. Bind off.

Sleeves

Place the sts for the sleeve on 3,5 mm double-pointed needle (or circular needle if the magic loop technique is used) and pick up and knit 16 sts along the 16 sts that were cast on for the underarm on the body. There are now i alt 64 (72) 80 (80) sts on the needle. Place a marker for the beginning of the round in the middle of the 16 sts picked up sts.

Knit 12 rounds in MC, then work all rows of the chart. Now knit in MC, until the sleeve measures 28 (30) 32 (32) cm, while working decreases when sleeve measures 26 and 27 (28 and 29) 30 and 31 (30 and 31) cm as follows: K1, k2tog, knit to the last 3 sts, k2tog, k1.

There are now 60 (68) 76 (76) sts on the needle. Work 16 (18) 20 (20) rounds of corrugated rib the same as at the neck edge.

The sleeve now measures approx. 36 (38) 40 (40) cm. If you desire a different sleeve length, the length can be adjusted before working the rib edge.

Work the second sleeve the same way as the first.

Finishing

Weave in all ends. Wash the finished sweater according to the instructions on the yarn and lay it on a flat surface to dry.

