

filcolana

OBSESSED WITH QUALITY YARN SINCE 1952



Design: Hanne Rikken
English translation: June Thomsen

Let is Snow

1st edition - August 2022 © filcolana
#FilcolanaLetItSnow

This beautiful Christmas sweater with spruce and snow is inspired by the lyrics in the song “Let It Snow”. The song is about getting the absolute most out of a beautiful snowy day, enjoying the Christmas atmosphere and being with the ones you love.

SIZES

S (M) L (XL) 2XL (3XL)

MEASUREMENTS

Fits chest sizes: 88-98 (98-108) 108-116 (116-124)

124-132 (132-138) cm

Chest: 100 (110) 118 (126) 134 (140) cm

Sleeve length: 45 (46) 47 (48) 48 (46) cm

Length: 66 (70) 72 (74) 75 (76) cm

GAUGE

20 sts and 26 rows in stockinette on 4 mm needles = 10 x 10 cm.

Needle sizes are for guidance only. If you have the right gauge in width, but not in height, it might help to change to needles of different material, i.e., from metal to tree or vice versa.

Note, it might be necessary to change needles when working with multiple colours compared to working with just a single colour. Also note that the gauge should be the same for both the plain knit and the pattern knit to achieve the desired result.

MATERIALS

Yarn from Filcolana

Colour A:

350 (400) 400 (450) 450 (500) g **Pernilla** in cl. 818 (Fisherman Blue) and

350 (400) 450 (450) 500 (550) g **Vilja** in col. 229 (Sailor Blue)

Colour B: 100 (100) 100 (100) 150 (150) g **Pernilla** in col. 977 (Marzipan) and

100 (100) 100 (150) 150 (200) g **Vilja** in col. 100 (Natural White)

Work each colour with 1 strand of Pernilla and 1 strand of Vilja held together throughout work.

3.5 mm circular needles, 40 and 80-100 cm

4 mm circular needles, 80-100 cm

3.5 mm and 4 mm double pointed needles (can be skipped if you are knitting using the magic loop technique)

Stitch markers or contrast coloured thread





Techniques

SPECIAL ABBREVIATIONS

M1L - Left slanted increase

From the front, lift the horizontal strand between stitches with the left needle and knit through the back loop (1 st increase).

Sl1 k1 psso

Slip 1 st, k1, pass the slipped stitch over.

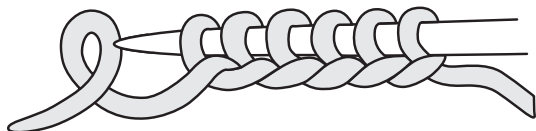
SPECIAL TECHNIQUES

Short rows

Slip 1st st purl-wise with yarn in front onto right needle. Tug the yarn up and over the needle. This creates a double stitch. Continue working the row as instructed in pattern. On next row work the double sts together. This technique is called German short rows.

Backward loop cast on

Hold your working yarn over your right index finger, bend the index finger towards you. This will create a loop around your finger. Insert the tip of your right-hand needle into the back of the new loop and release it onto the needle. Repeat this till you have the required number of stitches.



Italian bind off

Measure a tail approx. 3 times the length of the rib circumference. Thread tail onto a tapestry needle. First st should be a knit st.

1. Insert tapestry needle into the first st on left needle as if to purl, pull the yarn through.
 2. From behind work insert needle between 1st and 2nd st. Pull needle and yarn to front of work.
 3. Insert tapestry needle through the 2nd st, from front and out on the back.
 4. Insert tapestry needle from front into the 1st st as if to knit it, slip st off needle.
 5. From the front insert tapestry needle - from right to left - into the front leg of the 2nd st (knit st), pull yarn through.
 6. Insert tapestry needle into 1st st as if to purl, slip st off needle.
- Repeat steps 2-6 until you bound off all sts. Weave in end, carefully.

Workflow

Let It Snow is worked from top to bottom.

Start with short rows in the neck, then work the yoke according to chart and later divide work into body and sleeves.

Let the sleeve stitches rest on stitch holders while working the body to the given or desired length, then bind off.

Then knit the sleeves and finish them with a ribbing edge.

Finally, pick up stitches at the neckline and work a ribbing edge, bind off with Italian bind off.

CHART

See page 4.





Pattern

YOKE

With 4 mm needles and colour A (Pernilla and Vilja held together) cast on 96 (100) 104 (110) 116 (120) sts.

Join round and place a start marker (middle of the back).

Knit 1 round of stockinette (knit all sts).

Now work short rows to heighten the neck, knit as follows:

1st short row (RS): K6, turn work (see Special techniques).

2nd short row: Work a short row, p11, turn.

3rd short row: Work a short row, knit to 8 sts after the short row on previous row, turn work.

4th short row: Work a short row, purl to 8 sts after the short row on previous row, turn work.

Repeat short rows 3 and 4 another 4 (4) 4 (4) 5 (5) times.

Last short row (RS): Work a short row, knit to the start marker.



Only sizes (M) L (XL) 2XL (3XL)

Next round: Knit - (0) 0 (0) 4 (0) sts, *M1L, knit - (25) 13 (11) 9 (10) sts*, repeat from * to * to last - (0) 0 (0) 4 (0) sts, knit - (0) 0 (0) 4 (0) sts = - (104) 112 (120) 128 (132) sts.

All sizes

Knit pattern and increases according to chart.

When you have worked the 2 rows of Christmas trees from the chart, you have 288 (312) 336 (360) 384 (396) sts on your needles.

Now, repeat only the top 10 rows of the chart, for the rest of work.

Work 5 (8) 10 (14) 14 (16) 18 (18) rounds in total and separate body and sleeves like this:

Next round: Knit 44 (48) 52 (56) 60 (62) sts (half the back), place the next 56 (60) 64 (68) 72 (74) sts on a stitch holder (sleeve), cast on 12 (14) 14 (14) 14 (16) new sts with the make 1 increase towards method in continuation of the sts on the right hand needle, place a side marker in the middle of these new sts, knit 88 (96) 104 (112) 120 (124) sts (front), place the next 56 (60) 64 (68) 72 (74) sts on a stitch holder (sleeve), cast on 12 (14) 14 (14) 14 (16) new sts in continuation of the sts on the right hand needle, place a side marker in the middle of these new sts, knit 44 (48) 52 (56) 60 (62) sts (half the back) = 200 (220) 236 (252) 268 (280) sts.

BODY

Continue in stockinette in the round and follow the 10 top rounds of the chart, until the body measures approx. 30 (32) 33 (34) 34 (34) cm from the armhole.

Break colour B and continue with colour A exclusively.

Change to 3.5 mm circular needles.

Rib

Knit rib (k1, p1) for 5 (5) 5 (6) 6 (6) cm.

Bind off with Italian bind off (see Special techniques).

SLEEVES

Slip the 56 (60) 64 (68) 72 (74) sleeve sts onto 4 mm dpns (or use a long circular needle and magic loop technique), pick up 12 (14) 14 (14) 14 (16) new sts in the cast on sts in the armhole and place a start marker in the middle of those new sts = 68 (74) 78 (82) 86 (90) sts.



Mark the 2 middle sts under the sleeve, work these in colour A for rest of work, they are not included in the chart pattern.

Now, follow the chart and only work a repetition of the top 10 rounds, knit 20 (20) 16 (16) 14 (14) rounds of stockinette.

Next round (decrease round): K1, k2tog, knit to last 3 sts, sl1 k1 psso, k1.

Repeat decrease round on every 9th (9th) 8th (8th) 8th (7th) round 7 (7) 9 (9) 9 (11) times in total = 54 (60) 60 (64) 68 (68) sts.

Continue without decreases until the sleeve measures 40 (41) 42 (41) 42 (40) cm.

Note! If you wish to adjust the sleeve length, you should do this before working the ribbing edge.

Change to 3.5 mm circular needles.

Rib

Work rib (k1, p1) for 5 (5) 5 (6) 6 (6) cm.

Bind off with Italian bind off.

Knit the second sleeve the same way.

NECKBAND

Start at center of the back, with 3.5 mm circular needles and colour A, pick up 96 (100) 104 (110) 116 (120) sts along the right side of the neckline.

Purl 1 round and knit 1 round.

Then work rib (k1, p1) until the ribbing measures 4 cm.

Bind off with Italian bind off.

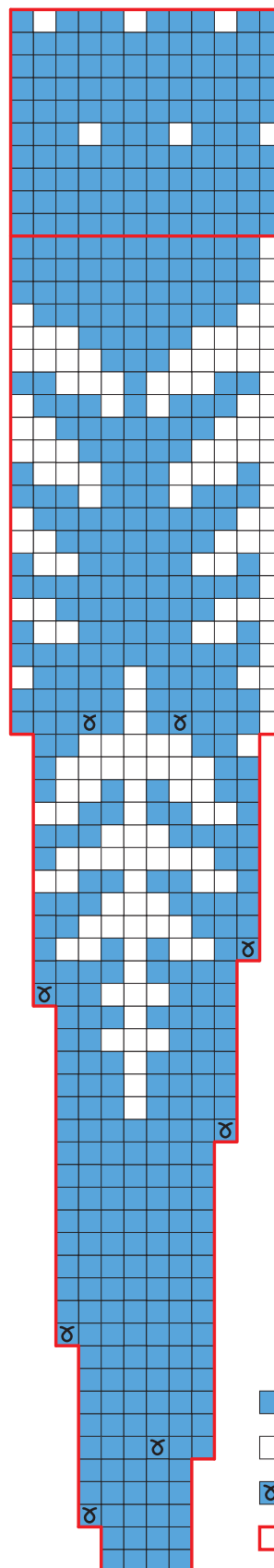
FINISHING

Weave in all ends.

Wash the sweater according to washing instructions on the labels and lay it flat to dry on a towel.

CHART

Read chart from bottom and up and from right to left on all rounds.



- Colour A
- Colour B
- M1L
- Repeat