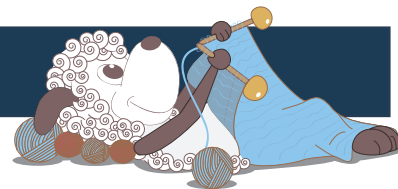


# Tilde - a round yoke sweater for girls



Design: Hanne Rikken

*The sweet little sister design to the women's sweater Thit.  
The beautiful yoke worked in colourwork and a texture pattern emphasises the shape of the round yoke that is the focus of this classic design.  
Here is the chance to knit a lovely mother daughter set of sweaters in a fashionable and contemporary style, that takes its inspiration from the traditional Scandinavian pattern traditions.*

4th English edition - October 2022 © Filcolana A/S  
English translation: Signe Strømgaard

## Materials

Pernilla by Filcolana

MC: 150 (200) 200 (250) 250 g in colour 977 (Marzipan melange)

CC: 50 g (alle str.) in colour 825 (Acacia)

Tilia by Filcolana

MC: 75 (100) 100 (100) 125 g in colour 101 (Natural White)

CC: 25 g (alle str.) in colour 136 (Mustard)  
- the sweater is worked with one strand of Pernilla and one strand of Tilia held together throughout

3,5 mm circular needle, 40 cm

3,5 mm and 4 mm circular needle, 60 cm

3,5 mm and 4 mm double-pointed needles

Stitch markers

## Sizes

4 years/104 cl (6 years/116 cl) 8 years/128 cl (10 years/140 cl)

## Measurements

Body, chest: 54-58 (58-63) 63-67 (67-71) cm

Sweater, chest: 66 (70) 74 (80) cm

Sleeve length: 26 (28) 32 (34) cm

Total length: 44 (46) 48 (50) cm



## Gauge

20 sts and 27 rows in stockinette stitch on a 4 mm needle = 10 x 10 cm

## Special abbreviations

**M1:** Make 1. Increase one stitch by lifting the chain between sts onto the left meedle and knitting it through the back loop.

## Special techniques

**Pearl rows:**

Work 2 round of stockinette stitch.

Next round: \*K1, insert the right needle through the stitch 2 sts below the next stitch on the needle and pull the working yarn through to the front as if knitting this stitch, let the next stitch fall off the needle \*. Repeat from \* to \* to end of round.

**Short rows - GSR (German short rows):** Work to where the turn needs to be, turn, then slip the first stitch purl-wise with the yarn held in front. Bring the working yarn up and over the needle and down on the other side, pulling hard enough on the yarn to make the stitch on the needle look like a double stitch (the 2 legs of the stitch are visible). Continue row as pattern describes.

When working across the stitch that looks like a double stitch, work it as 1 stitch, either knitting or purling the 2 legs together, as the pattern describes.

## Directions for knitting

Tilde is worked from the bottom up. First the body is worked to the armholes, then the sleeves are worked and the parts are joined for the yoke, which is worked with the colour and texture pattern. Short rows are worked along the neck to shape the neckline, before the neck rib.

## Body

Cast on 128 (136) 144 (152) sts with Pernilla and Tilia held together, both in MC, using a 3,5 circular needle. Join in the round and place a marker for the beginning of the round. Knit 1 round.

Work 12 rounds of twisted rib (k1 tbl, p1).

Place a marker after 64 (68) 72 (76) The 2 markers mark the 2 side "seams" separating front and back.

Change to a 4 mm circular needle. Work 2 rounds of stockinette stitch with MC, then work all rounds of Chart A.

Now continue in stockinette stitch with MC until the work measures approx. 24 (26) 28 (30) cm, or desired length.

## Bind off for the armholes on the next round:

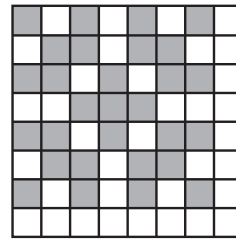
\*Bind off 8 (8) 8 (10) sts, knit 56 (60) 64 (66) sts\*. Repeat from \* to \* once more.

Let the body rest on the needle while the sleeves are worked.

## Sleeves

Cast on 40 (40) 40 (48) sts with Pernilla and Tilia held together, both in MC, using 3,5 mm double-

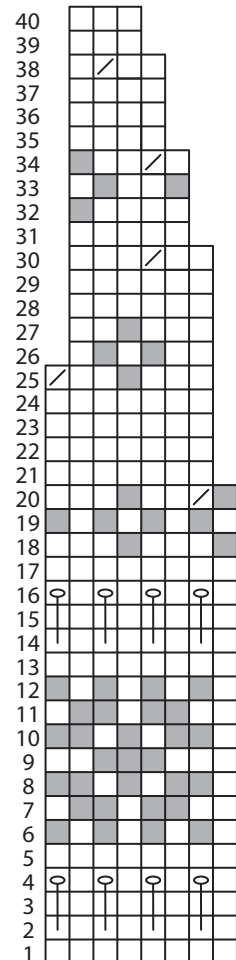
Chart A



- CC
- MC
- K2tog with next st
- P

 Pearl rows (see description)

Chart B



pointed needles. Join in the round and place a marker for the beginning of the round. Knit 1 round. Work 12 round of twisted rib (k1 tbl, p1).

Change to 4 mm double-pointed needles and work 2 rounds of stockinette stitch with MC. Work all rows of Chart A.

Now continue in stockinette stitch with MC while at the same time working an increase round of the first round after finishing the chart and then every 10th (10th) 8th (12th) round a total of 4 (4) 6 (4) times. Increase round: K1, M1, k to last stitch of round, M1, k1.

There are now 48 (48) 52 (56) sts on the needle. Work straight until sleeve measures 26 (28) 32 (34) cm.

## Bind off sts for the armhole on the next round:

Bind off 4 (4) 5 (5) sts, k to the last 4 (4) 5 (5) sts, bind off 4 (4) 5 (5) sts – a total of 8 (8) 10 (10) sts have

been bound off.

Work the second sleeve the same way as the first.

## Yoke

Join the sleeves to the body on the circular needle over where sts were bound off for the armholes.

Begin the round where the left sleeve and back meet.

There are 192 (200) 216 (224) sts on the needle.

Work 2 (2) 4 (6) rounds of stockinette stitch.

Work all rows of Chart B, NOTE: last st on round 25 is worked k2tog with first st on round 26.

There are now 72 (75) 78 (81) sts on the needle.

Place 2 markers – one on either side of the 8 sts at the centre of the back of the neck. Work short rows as follows: Knit to the stitch marker at the left side of the back of the neck. Turn. Purl to the opposite marker. Turn. Knit to 8 sts past the last RS turn. Turn. Purl to 8 sts past the last WS turn. Work short rows a total of 3 (3) 4 (3) times at either side of the markers.

Work 1 round of stockinette stitch.

Change to a 3,5 mm needle and work 10 rounds of twisted rib (k1 tbl, p1). Work 1 round of stockinette stitch. Bind off.

## Finishing

Sew the hole under each sleeve. Weave in all ends.

Gently wash the finished sweater according to the instructions on the yarn, put it through a (dry) spin cycle in the washing machine and lay it on a flat surface to dry.