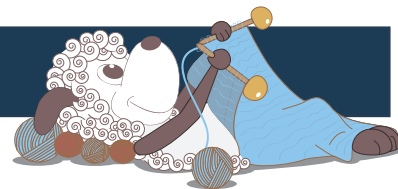


Flint - a classic colourwork sweater for men



Design: Hanne Rimmen

Flint is a new Nordic interpretation of the classic men's colourwork sweater. While the design is very simple and classic, it is also very contemporary and fresh in both colours and fit.

2nd English edition - February 2020 © Filcolana A/S
English translation: Signe Strømgaard

Materials

MC: 250 (300) 350 (400) 450 g Pernilla by Filcolana in colour 818 (Fisherman Blue)
CC1: 200 (250) 300 (350) 400 g Pernilla by Filcolana in colour 977 (Marzipan)
CC2: 50 g (all sizes) Pernilla by Filcolana in colour 973 (Nougat)
3,5 mm circular needle, 40 cm
3,5 mm and 4 mm circular needle, 80 cm
3,5 mm and 4 mm double-pointed needles
Stitch markers

Sizes

S (M) L (XL) XXL

Measurements

Body, chest: 90-96 (97 -98) 99 -108 (109-120) 121-128 cm
Sweater, chest: 100 (106) 114 (126) 134 cm
Sleeve length: 50 cm (all sizes)
Length to armhole: 42 (45) 45 (46) 47 cm

Gauge

24 sts x 26 rows in stockinette stitch on a 4 mm needle = 10 x 10 cm

Special abbreviations

M1: Make 1. Increase one stitch by lifting the chain between sts onto the left needle and knitting it through the back loop.



Skp: slip 1 stitch, knit the next stitch, pass the slipped stitch over the knit stitch.

Directions for knitting

The sweater is worked from the bottom up. First the body and sleeves are worked in the round, then the pieces are joined and the yoke is worked with raglan decreases. Finally, a rib edge is worked at the neck edge.

If you wish to extend the body or sleeves, you need to increase the length of the stockinette section that is worked before the stranded pattern is started.

Body

Cast on 240 (256) 272 (304) 320 sts on a 3,5 mm circular needle with MC. Join in the round and place a marker for the beginning of the round. Work 6 cm of k2, p2 ribbing as follows: Work 8 rounds with MC, work 3 rounds in CC2, then work 8 rounds in MC. Change to a 4 mm circular needle and work in stockinette stitch in MC. At the same time place a second marker after 120 (128) 136 (152) 160 sts, for the side "seam".

Work 0,5 (3,5) 3,5 (4,5) 5,5 cm in stockinette stitch. Now work in charted pattern according to Chart I until the body measures approx. 42 (45) 45 (46) 47 cm. Now bind off 15 sts for the armholes at each stitch marker. The bind off needs to be shifted to fit the pattern as shown in Chart II. There are now 105 (113) 121 (137) 145 sts on front and back.

Note: Be sure to bind off for the armholes on the same row of the pattern at both armholes, on both

the body and the sleeve, so the pattern is symmetrical and even on the yoke and along the raglan lines. Let the work rest on the needle.

Sleeves

Cast on 56 (56) 56 (64) 64 sts on 3,5 mm double-pointed needles with MC. Join in the round and place a marker for the beginning of the round. Work 6 cm of k2, p2 ribbing as follows: Work 8 rounds with MC, work 3 rounds in CC2, then work 8 rounds in MC. Change to a 4 mm circular needle and work in stockinette stitch in MC.

Work an increase round by working an M1 increase after the first stitch and before the last stitch of the round every 6th (6th) 6th (5th) 5th round a total of 16 (16) 16 (20) 20 times.

At the same time – begin working in pattern according to Chart I when the work measures 16 cm (incl. rib).

There are now 88 (88) 88 (104) 104 sts on the needle.

Work straight in pattern until the sleeve measures 50 cm.

Now bind off 15 sts for the armhole at the stitch marker. The bind off needs to be shifted to fit the pattern as shown in Chart II.

Yoke

Join the sleeves and body on the large circular needle and place a marker each of the 4 places where body and sleeves meet. The beginning of the round is between the left sleeve and the There are now a total of 356 (372) 388 (452) 468 sts on the needle.

Continue in pattern according to Chart I and work 2 round before beginning the raglan decreases.

Raglan decreases: *K1, k2tog, work in pattern to 3 sts before marker, skp, k1*, repeat from * to * to end of round. The stitch right before and after each marker form the raglan line. There sts are worked in MC throughout except for on the row of the pattern that is worked only in CC1, where they are also worked in CC1.

Work raglan decreases every other round a total of 30 (32) 33 (40) 42 times. There are now 116 (116) 124 (132) 132 sts on the needle.

Change to a 3,5 mm circular needle and work 6 cm of K2, p2 ribbing as follows: Work 8 rounds with MC, work 3 rounds in CC2, then work 8 rounds in MC. Bind off in rib.

Finishing

Sew the holes under the sleeves. Weave in all ends. Gently rinse the finished work, put it through a (dry) spin cycle in the washing machine, then lay it



Chart I

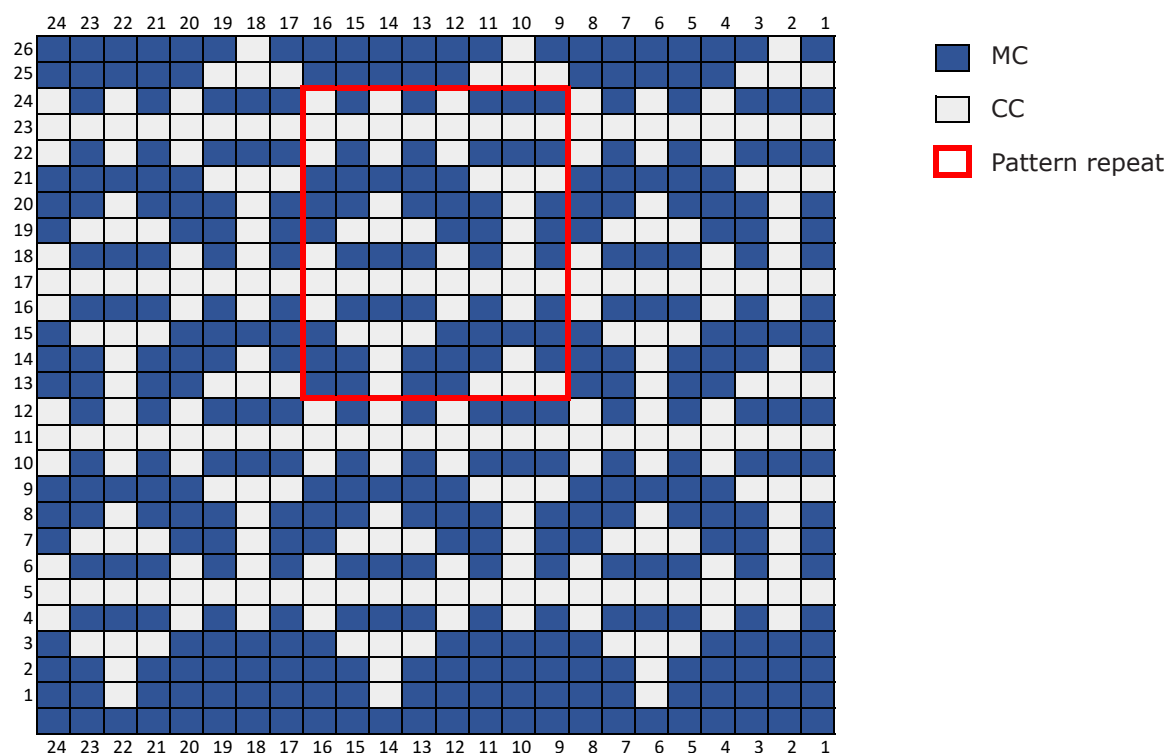


Chart II

