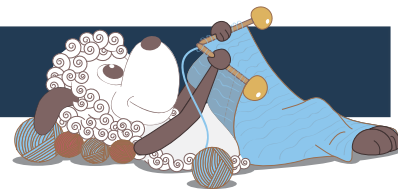


Tranum - a lovely, simple sweater



Design: Janne Højfeldt

Tranum is a classic and simple sweater with lots of gorgeous details: Beautiful, little cables on the raglan increases and two-toned rib edges.

The design is worked in one strand of Saga and one strand of Tilia, which is a lovely soft and light combination.

3rd English edition - October 2019 © Filcolana A/S
English translation: Signe Strømgaard

Materials

150 (150) 200 (200) 200 (200) 250 g Saga by Filcolana in color 103 (Reed)

100 (100) 125 (125) 125 (150) 150 g Tilia by Filcolana in color 331 (Steel)

4 mm circular needle, 60 cm

3,5 mm circular needle, 60 cm

4 mm and 3,5 mm double-pointed needles

Cable needle

5 stitch markers

Stitch holders

Sizes

XS (S) M (L) XL (2XL) 3XL

Measurements

Body, chest: 82-88 (89-96) 97-103 (104-110) 111-118 (119-126) 127-134 cm

Sweater, chest: 92 (98) 106 (112) 120 (128) 138 cm

Width at hem: 90 (96) 104 (110) 118 (128) 138 cm

Sleeve length: 47 cm - all sizes.

Total length: 54 (56) 57 (59) 60 (63) 65 cm

Gauge

20 sts and 26 rows in stockinette stitch on 4 mm needles with one strand of each yarn held together = 10 x 10 cm



Special abbreviations

BOR marker: Beginning of round marker.

Backward yarn over: reverse yarn over

Ssk: Slip one stitch as if to knit, slip the next stitch as if to purl, knit the two together through the back loops.

Directions for knitting

The sweater is worked from the top down, making it easy to adjust the width and length of the design. The yoke is worked in the round in one piece. Then the work is split into sleeves and body and each piece is finished separately - in the round. Finally the neck edge is knit.

Yoke

Cast on 104 (112) 112 (120) 124 (128) 132 sts with one strand of each yarn held together on a 4 mm circular needle. Join in the round and place a marker for the beginning of the round

Next round - place 4 markers: Knit 4 (4) 4 (4) 4 (4) 4 sts, place marker, knit 14 (16) 16 (18) 18 (20) 20 sts, place marker, knit 38 (40) 40 (42) 44 (44) 46 sts, place marker, knit 14 (16) 16 (18) 18 (20) 20 sts, place marker, knit 34 (36) 36 (38) 40 (40) 42 sts. The BOR marker is placed on the back right before the right sleeve. As the increases are worked on the yoke the BOR marker will move further toward the center of the back. The 4 other markers mark the raglans, where increases are made.

Round 1 (Row 1 of the chart): Knit to end of round.

Chart 1

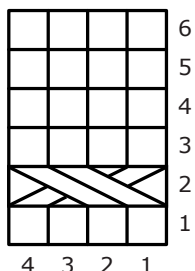
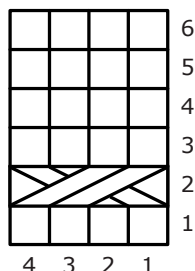





Chart 2



 Knit on the RS

 slip 2 sts to a cable needle and hold to front of work, k2, place marker on right needle, k2 from cable needle

 slip 2 sts to a cable needle and hold to back of work, k2, place marker on right needle, k2 from cable needle



Round 2 (Row 2 of the chart): BOR marker on right needle, knit to 2 sts before marker, knit to 2 sts before marker, backward yarn over, work chart 1, yarn over, knit to 2 sts before marker, backward yarn over, work chart 2, yarn over, knit to 2 sts before marker, backward yarn over, work chart 1, yarn over, knit to 2 sts before marker, backward yarn over, work chart 2, yarn over, knit to end of round.

8 increases have been worked.

Round 3 (Row 3 of the chart): Knit to end of round - knit the backward yarn, knit the yarn overs through the back loop.

Round 4 (Row 4 of the chart): BOR marker on right needle, knit to 2 sts before marker, backward yarn over, work chart 1, yarn over, knit to 2 sts before marker, backward yarn over, work chart 2, yarn over, knit to 2 sts before marker, backward yarn over, work chart 1, yarn over, knit to 2 sts before marker, backward yarn over, work chart 2, yarn over, knit to end of round.

8 increases have been worked.

Round 5 (Row 5 of the chart): Work as Round 3.

Round 6 (Row 6 of the chart): Work as Round 4.

Continue as established, working increases every other round. Follow the charts until a total of 25 (27) 29 (31) 33 (37) 39 decrease rounds have been worked and there are 88 (94) 98 (104) 110 (118) 124 sts on each of the front and back and 64 (70) 74 (80) 84 (94) 98 sts on each sleeve.

Dividing the yoke

Slip BOR marker to the right needle, knit to next marker, remove marker, place sleeve stitches on a stitch

holder, remove marker, cast on 4 (4) 8 (8) 10 (10) 14 new sts, knit across front sts, remove marker, place sleeve stitches on a stitch holder, cast on 4 (4) 8 (8) 10 (10) 14 new sts, knit to end of round.

Continue in the round in stockinette stitch across the 184 (196) 212 (224) 240 (256) 276 sts for the body, until the work measures 29 cm from where the new sts were cast on.

2-toned rib edge

Now work the 2 strands of yarn separately: BOR marker on right needle, *k1 with Tilia, p1 with New Zealand lammeuld*. Repeat from * to * to end of round.

Work 9 rounds of ribbing in this way.

Change to a 3,5 mm needle and work with the 2 strands of yarn held together again. Knit 4 rounds. Bind off.

Sleeves

Place the sts for the first sleeve back on 4 mm double-pointed needles. Cast on 2 (2) 4 (4) 5 (5) 7 sts with one strand of each yarn held together, knit across the sleeve sts on the needle, cast on 2 (2) 4 (4) 5 (5) 7 more new sts, place marker. Join in the round and knit 3 rounds.

Next round: K1, k2tog, knit to the last 3 sts of the round, ssk, k1.

Work decreases as above every 4th round a total of 10 (13) 16 (19) 21 (24) 26 times. There are now 48 (48) 50 (50) 52 (56) 58 sts on the needle. Continue straight in stockinette stitch until the sleeve measures 43 cm, measured from where new sts were cast on.

Work 6 rounds of 2-toned rib the same as on the body.

Change to a 3,5 mm needle and work with the 2 strands of yarn held together again. Knit 4 rounds.

Bind off: K2, *insert the left needle through the 2 first sts on the right needle, catch the working yarn and pull it through, then let the 2 sts fall off the needle, so there is only the new stitch left on the left needle, knit 1 stitch off the left needle*. Repeat from * to * until all sts have been bound off.

Work the second sleeve the same way as the first.

Neck edge

Pick up and knit 104 (112) 112 (120) 124 (128) 132 sts along the neck edge with one strand of each yarn held together and a 4 mm needle. Work 6 rounds of 2-toned rib the same as on the body. Change to a 3,5 mm needle and work with the 2 strands of yarn held together again. Knit 4 rounds. Bind off the same way as on the sleeves

Finishing

Sew the little holes under each sleeve. Weave in the ends.