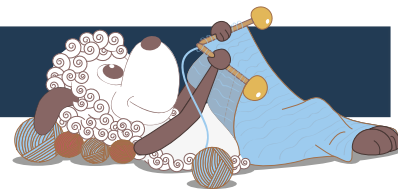


Eucalyptus - a beautiful spring shawl



Design: Karen Skriver Lauger

A lace pattern intersected with stripes of a different texture and colour make Eucalyptus a fun knit, but also exciting for the eye to look at, as you unconsciously try to reassemble the pattern. Eucalyptus is a lovely spring shawl, which is large enough to be worn draped over the shoulders in the traditional way, but also small enough to be wrapped around your neck as a decorative accessory that compliments your outfit of the day.

1st English edition - January 2021 © Filcolana A/S

Materials

250 g Anina by Filcolana in 4 colours:

Colour A: 100 g

Colour B: 50 g

Colour C: 50 g

Colour D: 50 g

4 mm circular needle

Marker

Soft mint and beige shawl

Colour A: Colour 333 (Seafoam)

Colour B, C and D: Colour 978 (Oatmeal)

Pink and aqua shawl

Colour A: Colour 2010 (Rasberry Pink)

Colour B: Colour 820 (Isabella)

Colour C: Colour 808 (Aqua Mist)

Colour D: Colour 335 (Peach Blossom)

Size

One size – but easily adjustable

Measurements

Top edge (tip to tip): 190 cm

Depth at the centre/neck: 90 cm



Gauge

16 sts in stockinette stitch or lace pattern on size 4 mm = 10 cm.

Special abbreviations

SSK (decrease): Slip 2 sts knit-wise (one after the other), place the stitches back onto the left needle, knit 2 sts together through the back loop.

DBD (double decrease): Slip 1 stitch knit-wise, knit 2 sts together, pass the slipped stitch over.

Sl1 wyif: Slip 1 stitch purl-wise with yarn in front of the work.

About the pattern

The shawl is knit from the centre of the neck and out and down to the edge. The lace edge is knit sideways onto the shawl, thus binding off the stitches.

There are many colour changes, so it is a good idea to weave or knit in the ends as you go.

Chart for lace pattern

Note that the charts only show the right side. On the wrong side all sts are purled.

Work from chart A1 for the first lace stripe.

Work from chart A2 at the second and every following lace stripe. In chart A2 the marked box shows the pattern repeat.

Shawl

Cast on 4 sts on a size 4 mm needle using col. A.

Row 1: Yarn over, k2tog, k2.

Row 2: K4.

Work row 1 and 2 a total of 6 times, then work row 1 once more.

Next row: K3, yarn over, k1, turn the work 90 de-

grees, pick up and knit 2 sts (1 stitch in each yarn over), yarn over, place marker, pick up and knit 1 stitch in yarn over, yarn over, pick up and knit 3 sts (1 stitch in each yarn over), yarn over, turn work 90 degrees, pick up and knit 3 sts along the cast on edge. There are now 17 sts on the needle.

Row 3 (WS): K3, p to last 3 sts, k3.

Row 4 (RS): K3, yarn over, k to marker, yarn over, slip marker to right needle, k1, yarn over, k to the last 3 sts, yarn over, k3.

Row 5: K all sts.

Work row 4 and 5 a total of 2 times (=4 rows total).

Now begin working alternately in lace pattern in the colours B, C, and D (keep this order when you repeat the colours) and in garter stitch in col A.

Lace pattern in contrast colours:

Row 6 (RS): K3, yarn over, work lace pattern from chart to marker, yarn over, slip marker to right needle, k1, yarn over, work lace pattern from chart to last 3 sts, yarn over, k3.

Row 7 (WS): K3, p to last 3 sts, k3.

Garter stitch ridges with col A:

Work Row 4 and 5 (above) a total of 2 times.

Alternate between lace pattern with the colours B, C and D and garter stitch ridges with colour A until you have worked 4 stripes with both colour C and colour D and 5 stripes with colour B. End by working garter stitch ridges in colour A (i.e. work Row 4 and 5 twice each) after the last lace section with colour B.

Chart A2

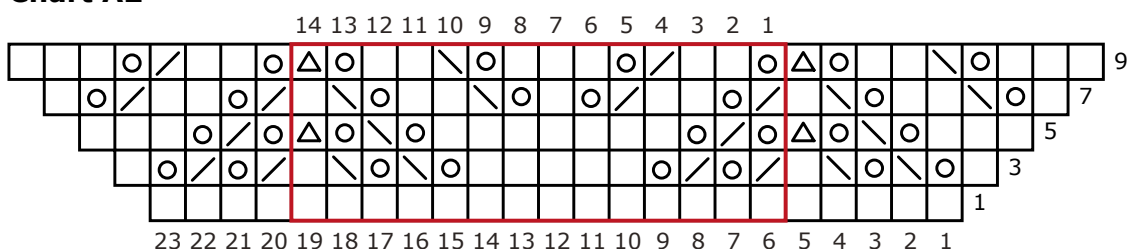
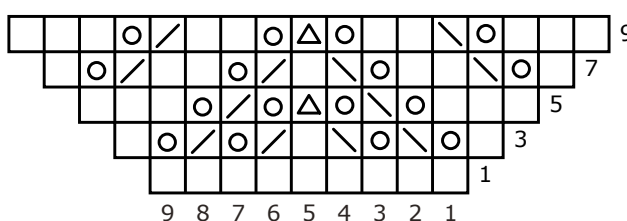


Chart A1



- knit
- o yarn over
- / k2tog
- \ ssk
- △ DBD

Note: If you wish, you can increase the size of the shawl by working more stripes of the lace pattern (alternated by garter stitch ridges in colour A) before working the edge. Note that if you increase the size, you will need more yarn.
Work Row 4 with colour A once more. Break colour B, C, and D.

There are now 393 sts on the needle.

Edge

The edge is knit sideways onto the body of the shawl using col A.

Begin by casting on 9 sts at the end of the last row.

Row 1: K7, k2tog, turn work.

Row 2: Sl1 wyif, k1, yarn over, k2tog, k1, yarn over, yarn over, k3.

Row 3: Sl1 wyif, k3, p1, k2, yarn over, k2tog, k2tog, turn work.

Row 4: Sl1 wyif, k1, yarn over, k2tog, k4, yarn over, yarn over, k3.

Row 5: Sl1 wyif, k2, p1, k5, yarn over, k2tog, k2tog, turn work.

Row 6: Sl1 wyif, k1, yarn over, k2tog, k8.

Row 7: Bind off 4 sts, k4, yarn over, k2tog, k2tog, turn work.

Repeat Row 2-7 until all the sts from the body of the shawl have been worked together with the edge and thus bound off. The last time Row 7 is worked, bind off all remaining sts (remembering to knit together the last edge stitch and the last stitch from the shawl before binding off).

Finishing

Weave in all ends. Wash the shawl gently and block it well with a pin in each tip of the edge. Let it dry lying flat.

