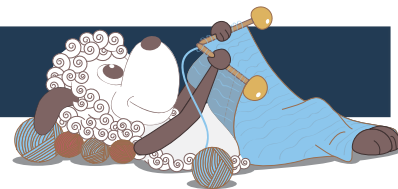


Morgenfryd - a gorgeous, large shawl



Design: Karen Skriver Lauger

Morgenfryd is a big shawl with a pattern inspired by the budding spring and light mornings, where a big shawl is a wonderful thing to wrap around your shoulders.

4th English edition - February 2020 © Filcolana A/S

Materials

275 g Anina by Filcolana
4 mm circular needle, 60 or 80 cm
1 stitch marker

Blue version (this page)

Anina in colour 1061 (Bluestone)

Yellow version (page 2 and 4)

Anina in colour 332 (Warm olive)

Sizes

One size, but the size is easily adjustable by adding or subtracting repeats of the lace patterns.

Measurements

Wing span (from tip to tip along upper edge): 210 cm
Depth (from neck to bottom tip): 102 cm

Gauge

The shawl has a repeat of 8 sts and 16 rows (a pattern repeat from chart B) which measures 5 x 4,5 cm after blocking.

Special abbreviations

[see the chart symbol key]

RS / WS = right side / wrong side

SM = slip the marker from the left to the right needle

Directions for knitting

The shawl is worked from the top center (at the neck) and down and out toward the edge. There are three charts, which show the two lace patterns and the edge.



Pattern

Cast on 5 sts on size 4 mm needle.

Row A (RS): k1, yo, k1, yo, place marker, k1, yo, k1, yo, k1

Row B (WS): k1, p to marker, SM, p to last st, k1

Now begin working the lace pattern from Chart A as follows:

Row 1 (RS): k1, yo, Chart A until marker, yo, SM, k1, yo, Chart A to last st, yo, k1

Row 2 (WS): k1, p to marker, SM, p to last st, k1

Chart A shows all RS rows (odd rows), while the chart sts are purled on WS rows (even rows).

Repeat row 1 and 2 until you have worked all 26 rows of Chart A. Then repeat rows 19-26 of Chart A another 14 times.

The sts in the marked box are repeated one additional time for each repeat of row 19-26 you work. This means that the second time you work row 19-26, you repeat the sts in the box 2 times, etc.

Continue until you have worked a total of 14 repeats of row 19-26 (there are a total of 16 repeats of the pattern, as row 1-18 establish the first 2 repeats).

Note: You can make the shawl smaller or bigger by working fewer or more repeats of row 19-26 from Chart A.

Now start working the lace pattern from Chart B as follows:



Row 1 (RS): k1, yo, Chart B until marker (repeat the sts in the marked box), yo, SM, k1, yo, Chart B to last st (repeat sts in the marked box), yo, k1

Row 2 (WS): k1, Chart B to 1 st before marker (repeat sts in the marked box), p1, SM, Chart B to last st (repeat sts in the marked box), k1

Chart B shows all the rows as seen from the RS. On RS rows (odd rows) work the chart from right to left. On WS rows (even rows) work the chart from left to right. The sts in the marked box are repeated over the row.

Work a total of 6 repeats of row 1-16 from Chart B. Then work row 1-14 from Chart B one more time.

Now work the edge by knitting Chart C as follows:

Row 1 (RS): k1, yo, Chart C to the marker (repeat sts in the marked box), yo, SM, k1, yo, Chart C to last st (repeat sts in the marked box), yo, k1

Row 2 (WS): k1, Chart C to 1 st before marker (repeat sts in the marked box), p1, SM, Chart C to last st (repeat sts in the marked box), p1

Chart C shows all the rows as seen from the RS. On RS rows (odd rows) work the chart from right to left. On WS rows (even rows) work the chart from left to right. The sts in the marked box are repeated over the row.

Work all 9 rows from Chart C (end with a right side row = row 9). Note that you are increasing a considerable number of sts during these 9 rows.

Bind off loosely on next row (WS): k2, *move 2 sts from right to left needle, k2tog tbl, k1* repeat from * to * until the end of the row (remove the marker when you reach it) and end with moving 2 sts from right to left needle, k2tog tbl.
Break the yarn and pull the end through the last st.

Finishing

Weave in all ends. Wash the shawl carefully and block it, so you form small points in the purl sections of Chart C.

Chart key can be found on the last page of the pattern

Chart A

Note: Chart A only shows RS rows. The WS rows are purled.

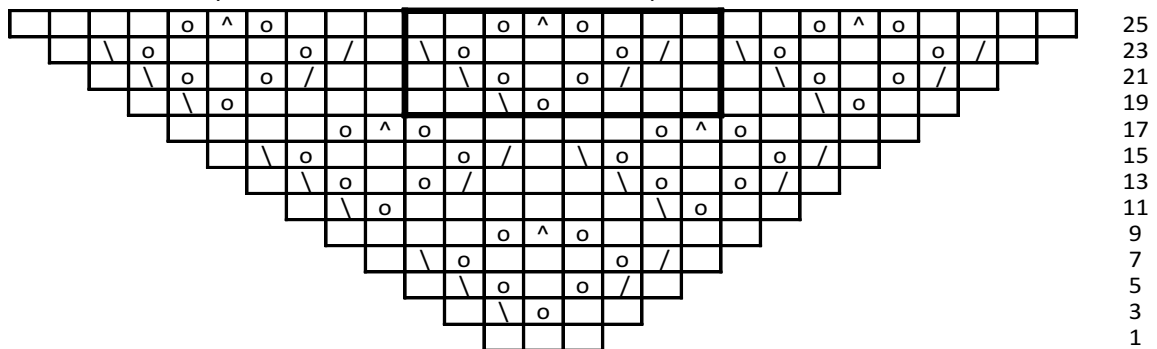


Chart B

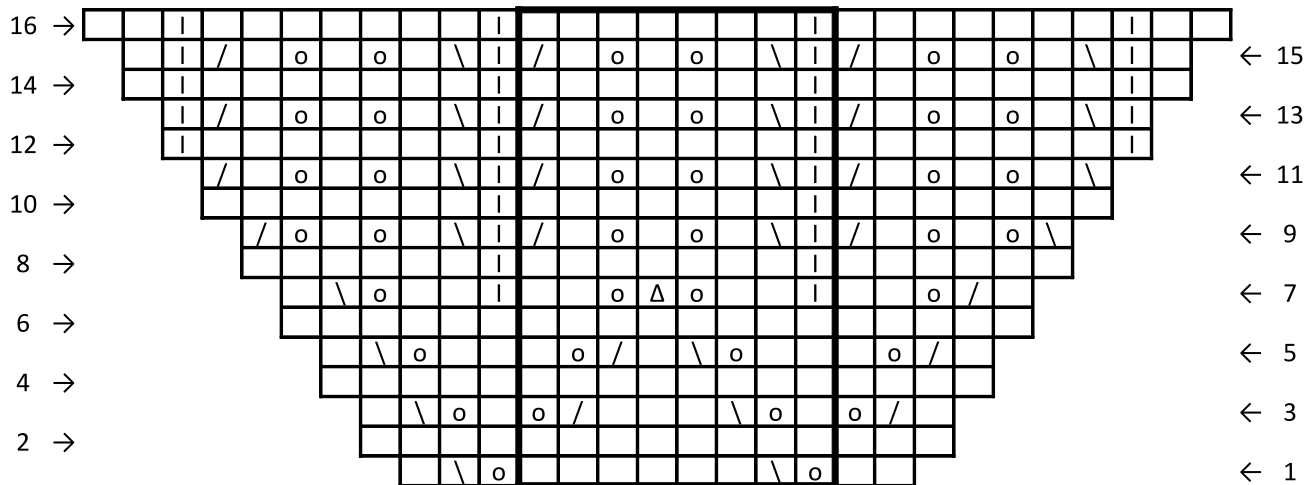
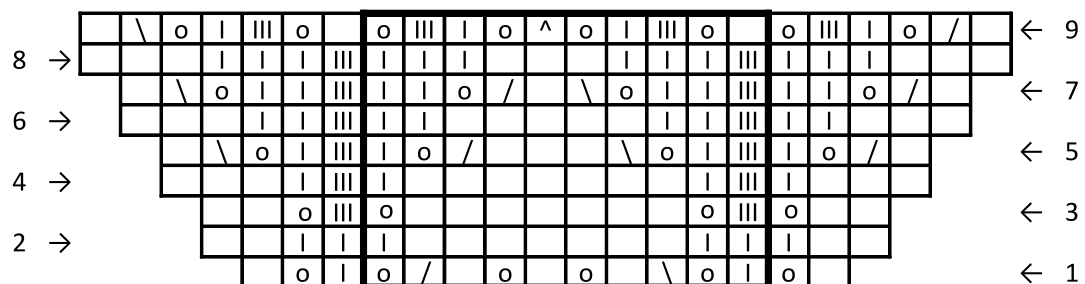






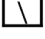




Chart C



-  pattern repeat
-  knit on the RS, purl on the WS
-  purl on the RS, knit on the WS
-  purl 3 on the RS, knit 3 on the WS
-  yarn over
-  k2tog
-  stbl
-  sl1, k2tog, pass slipped stitch over
-  sl2 together as if if knitting the sts together, k1, pass slipped stitch over
- direction for knitting - this row is worked left to right
- ← direction for knitting - this row is worked right to left

