

filcolana

OBSESSED WITH QUALITY YARN SINCE 1952



Design: Karen S. Lauger // Lykkefanten
English translation: June Thomsen

Nova

1st edition - August 2022 © filcolana
#FilcolanaNova

The Nova shawl is knitted with the sound of soft and relaxed Bossa Nova in the ears. The designer is inspired by how some rhythms or melodies almost clash against each other, while at the same time matching perfectly. The warm and glowing sound unfolds like the pattern on the shawl against a background rhythm of ridges, and eventually becomes a big, warm, and soft hug that you can sling around your shoulders.

SIZE

One size

MEASUREMENTS

Total width from edge to edge: Approx. 200 cm
Centre length: Approx. 65 cm

GAUGE

16 sts and 28 rows in lace pattern on 5 mm needles
= 10 x 10 cm after washing and blocking.

Needle sizes are for guidance only.

If you have more stitches on 10 cm, change to a larger needle. If you have fewer stitches on 10 cm, change to smaller needles.

MATERIALS

Yarn from Filcolana

150 g Saga in col 311 (Turmeric)

125 g Alva in col 285 (Curry)

Knit shawl with one strand of each quality held together throughout work.

5 mm circular needles, 80-100 mm



Techniques

SPECIAL ABBREVIATIONS

inc (increase)

Lift the bar between 2 sts onto your needle and knit or purl it through the back loop (as the pattern shows)

ssk (decrease)

Slip 2 sts knit-wise, slip the sts back onto the left needle and knit them together through the back loop.

kyok (double increase)

In next st make a k1, yo, k1 = 2 sts increased.

CDD (centred double decrease)

Slip 1 st, knit 2 sts together, pass the slipped st over.

kfb (increase)

Knit front and back in the same st.

SPECIAL TECHNIQUES

Figure eight cast on

Hold two needles (or the two needle points) parallel in left hand. Hold the yarn in front of the needles. Insert the working yarn between the needles, to the back and over the top needle, then insert the yarn between the two needles again, to the back and under the lower needle. The yarn now has a figure eight shape around the two needles. Continue leading the yarn alternately from the middle and back and over the upper needle and to the back and under the lower needle, until you have the desired stitch count.

CHART

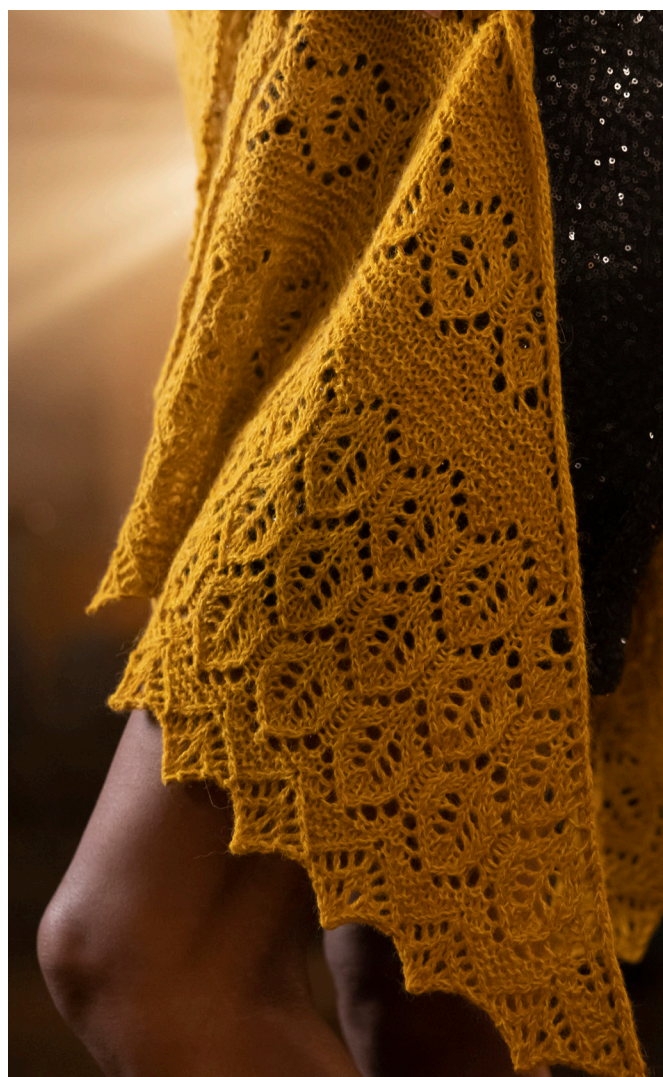
Find charts on page 5.

Workflow

Work the shawl from the middle of the neck and outwards.

On every right-side row work increases along the top edge and on increase rows along the way.

Alternate between ridges and lace pattern according to chart.





Pattern

With figure eight cast on (= 3 sts on each needle) cast on 6 sts.

Knit 6 stockinette rows, but only on the 3 top sts.

1st row (RS): k3, yo, turn work 90 degrees, pick up 5 sts along the edge, turn work, yo, knit the 3 sts from the bottom of the cast on = 13 sts.

2nd row: p3, k1, knit kfb in each of the next 4 sts, k2, p3.

You now have 17 sts on the needles.

3rd row: k3, yo, knit to last 3 sts, yo, k3.

4th row: p3, knit to last 3 sts, p3.

Knit 3rd and 4th row 2 times in total.

You now have 21 sts on your needles.

1st increase (RS): k3, yo, k2, * inc, k1 *, repeat from * to * to last 4 sts, k1, yo, k3 = 35 sts.

Knit 4th row once and then 3rd and 4th rows 5 times in total.

You now have 45 sts on your needles.

2nd increase (RS): k3, yo, * k2, inc, k1, inc *, repeat from * to * to last 6 sts, k3, yo, k3 = 71 sts.

Work 4th row once.

Now, work pattern according to diagram A as follows:

5th row (RS): k3, yo, knit pattern according to chart A (repeat the sts in the marked box) to last 3 sts, yo, k3.

6th row: p3, knit pattern according to chart A to last 3 sts, p3.

Repeat 5th and 6th rows, until all 18 rows in chart A have been worked.

Knit 3rd and 4th rows twice.

You now have 93 sts on your needles.

3rd increase (RS): k3, yo, * k3, inc *, repeat from * to * to last 6 sts, k3, yo, k3 = 123 sts.

Knit 4th row once and then 3rd and 4th rows twice.

Repeat 5th and 6th rows, until all 18 rows in chart A have been worked.

Knit 3rd and 4th rows twice.

You now have 149 sts on your needles.

4th increase (RS): K3, yo, k4, * inc, k5 *, repeat from * to * to last 7 sts, inc, k4, yo, k3 = 179 sts.

Knit 4th row once and then 3rd and 4th rows twice.

Repeat 5th and 6th rows, until all 18 rows in chart A have been worked.

Knit 3rd and 4th rows twice.

You now have 205 sts on your needles.

5th increase (RS): k3, yo, k5, * inc, k7 *, repeat from * to * to last 8 sts, inc, k5, yo, k3 = 235 sts.

Knit 4th row once and then 3rd and 4th rows twice.

Repeat 5th and 6th rows, until all 18 rows in chart A have been worked.

Knit 3rd and 4th rows twice.

You now have 261 sts on your needles.

6th increase (RS): k3, yo, * inc, k5 *, repeat from * to * to last 3 sts, inc, yo, k3 = 315 sts.

Knit 4th row once and then 3rd and 4th rows twice.

Now, follow chart B for the last part of the shawl.

7th row (RS): k3, yo, knit pattern according to chart B (repeat the sts in the marked box) to last 3 sts, yo, k3.

8th row: p3, knit pattern according to chart B to last 3 sts, p3.

Repeat 7th and 8th rows until all 40 rows in chart B have been worked.

You now have 399 sts on your needles.



Knit the last rows of the shawl as follows:

9th row (7th increase) (RS): k3, yo, k2tog, * yo, k2, kyok, k2, yo, CDD *, repeat from * to * to last 10 sts, yo, k2, kyok, k2, yo, ssk, yo, k3.

10th row: p3, k3, * p3, k7 *, repeat from * to * to last 11 sts, p3, k3, p5.

11th row: k3, yo, k4, * k2tog, yo, k1, yo, ssk, k5 *, repeat from * to * to last 12 sts, k2tog, yo, k1, yo, ssk, k4, yo, k3.

12th row: p3, * k5, p5 *, repeat from * to * to last 8 sts, k5, p3.

13th row: k3, yo, k4, * k2tog, yo, k3, yo, ssk, k3 *, repeat from * to * to last 4 sts, k1, yo, k3.

14th row: p5, * k3, p7 *, repeat from * to * to last 8 sts, k3, p5.

15th row: k3, yo, k1, * yo, ssk, k1, k2tog, yo, k2tog, yo, k1, yo, ssk *, repeat from * to * to last 9 sts, yo, ssk, k1, k2tog, yo, k1, yo, k3.

16th row: p7, * k1, p9 *, repeat from * to * to last 8 sts, k1, p7.

17th row: k3, yo, k1, * yo, ssk, yo, CDD, yo, k2tog, yo, k3 *, repeat from * to * to last 11 sts, yo, ssk, yo, CDD, yo, k2tog, yo, k1, yo, k3.

On next row bind off all sts (from the wrong side), like this:

P1, * yo, p1, pass the yo over the 1st st on right needle (counted from the point of the needle), then pass the 2nd st over the 1st st on right needle *, repeat from * to * until all sts are bound off.

FINISHING

Weave in all loose ends.

Wash shawl according to washing instructions on the labels and block it, so that the pattern unfolds and that small tips in the bind-off edge takes shape.

Let the shawl dry completely before unblocking it again.





- Repeat
- Yarn over
- Knit on right side, purl on wrong side
- Purl on right side, knit on wrong side
- / K2tog – knit 2 sts together
- \ SSK – slip, slip, knit
- ^ CDD – Slip 1 st knit-wise, knit 2 sts together, pass the slipped st over

Chart A

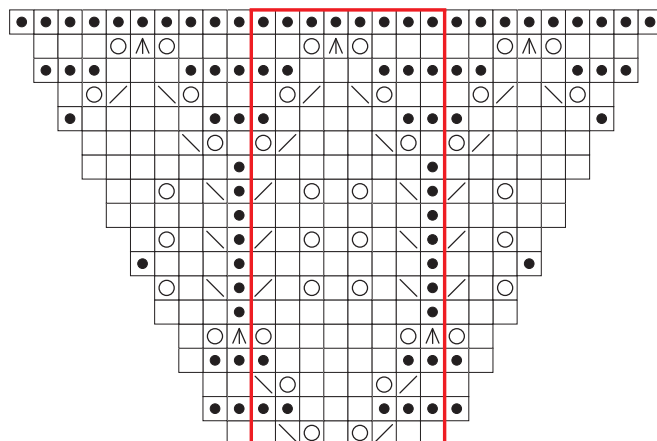


Chart B

