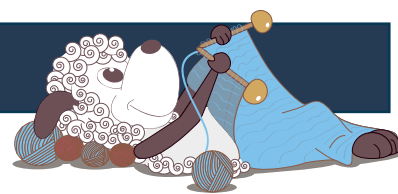


Futfut - a lovely sweater for train happy kids



Design: Karen Skriver Lauger

My youngest son is incredibly enamoured by trains, and thus decided that I needed to knit him a "train sweater". After agreeing to his request, he followed the work closely and asked how far I had gotten several times per day, and even brought me the sweater if I dared knit something else for a while. The result of all this is Futfut - a fantastic little train sweater. It is a lightweight sweater, but warm and comfortable, and quick to knit, as only part of the sweater features stranded knitting. The graphical element with the tracks can easily carry the sweater alone, if you don't want the train driving around the body. But for all girls and boys who love trains, this sweater is a must-have.

2nd English edition - October 2016 © Filcolana A/S

Materials

New Zealand lammeuld from Filcolana:

Main colour 1 (col 129): 35 (40) 45 (50) 60 g

Main colour 2 (col 951): 75 (75) 100 (100) 100 g

Approximately 15 g of each of col 111 (sleepers), col

115 (tracks and wheels etc.) and col 249 (train)

Circular needle (circ) size 2½ mm and 3 mm, 60 cm

Double pointed needles (dnp) size 2½ mm and 3 mm

Markers and a piece of contrasting yarn

Sizes

2 yrs/92 cl (4 yrs /104 cl) 6 yrs /116 cl (8 yrs /128 cl)

10 yrs /140 cl



Measurements

Chest: 60 (65) 70 (75) 79 cm

Sleeve length: 25 (28) 31 (34) 38 cm

Length under sleeve: 21 (23) 27 (29) 31 cm

Gauge

29 sts and 37 rows in stockinette stitch (and stranded knitting) on circ size 3 mm = 10 x 10 cm.

Special abbreviations

inc (increase): Lift the loop between 2 sts onto the left needle and knit it through the back loop.

ssk (decrease): slip 2 sts knit-wise, one after the other, move the sts back onto the left needle and knit them together through the back loop.

k2tog tbl: knit 2 sts together through the back loop

MC 1 / MC 2 = Main colour 1 / main colour 2

st st = stockinette stitch

About the pattern

The body is worked in the round in one piece from the cast on edge to the arm holes, where sts are bound off for the arm hole. The sleeves are worked from the cuff and up, and are placed onto the body over the armholes. The yoke is worked in the round with decreases. After the decreases the yoke is shaped with short rows, before working the neckband. All the patterns for the stranded knitting are shown in charts.

Body

Cast on 176 (188) 204 (216) 228 sts on circ 2½ mm with MC 1, join for knitting in the round, and work in ribbing (k2, p2) for a total of 12 (15) 15 (15) 15



rounds.

Change to circ 3 mm and place a marker at the beginning of the round. Work round in st st until the work measures 7 (8) 8 (9) 10 cm. Now work the stranded pattern from chart A (tracks). The chart is worked a total of 44 (47) 51 (54) 57 times on the round. After completing the chart, work 3 rounds st st in MC 2. Then work the train as follows:

Chart B (wagon) 1 (2) 2 (2) 2 times, chart C (tender) 1 time (all sizes), chart D (locomotive) 1 time (all sizes), k 0 (0) 4 (4) 4 with MC 2, chart B (wagon) 4 (4) 4 (5) 5 times, chart C (tender) 1 (0) 1 (0) 1 times.

If needed, place markers between the different chart sections to help with the knitting.

Work until all 20 rounds of the charts have been knit. Continue in st st with MC 2 until the work measures 22 (24) 28 (30) 32 cm.

Divide into front and back and bind off for arm holes as following: Bind off 10 (10) 12 (12) 14 sts, k 78 (84) 90 (96) 100, bind off 10 (10) 12 (12) 14 sts, k 78 (84) 90 (96) 100.

Place the body on hold while knitting the sleeves.

Sleeves

Cast on 44 (48) 52 (56) 56 sts on size 2½ mm needle with MC 1 and work in the round in ribbing (k2, p2) for a total of 12 (15) 15 (15) 15 rounds. Place a marker for the beginning of the round.

Change to size 3 mm and work round in st st. Work 1 round and start increasing on both sides of the beginning of the round as follows: k1, inc. 1, k to last st, inc. 1, k1.

Repeat the increase round every 7th (8th) 8th (8th) 8th round. Work until the work measures 7 (8) 8 (9) 10 cm. Now work stranded pattern from chart A (you might need to work half of the chart at the end of the round to make it fit the stitch count). Continue increasing, also while working chart A.

After the chart work with MC 2, and continue increasing until there are = 70 (74) 80 (84) 86 sts on the needle (13 (13) 14 (14) 15 increase rounds).

Work straight up in st st until the sleeve measures 25 (28) 31 (34) 38 cm, and bind off for arm hole as follows: bind off 5 (5) 6 (6) 7 sts, k until 5 (5) 6 (6) 7 sts remain, and bind these sts off.

Place the first sleeve on hold and knit a second sleeve identically to the first.

Yoke

Join body and sleeves on a circ 3 mm with MC 2 as follows: K 60 (64) 68 (72) 72 from the first sleeve (the beginning of the round is now located on the left shoulder), k 78 (84) 90 (96) 100 from the front of the body (the one with the locomotive), k 60 (64) 68 (72) 72 from the second sleeve, and finally k 78 (84) 90 (96) 100 from the body (back).

Chart A

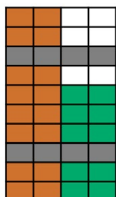


Chart B

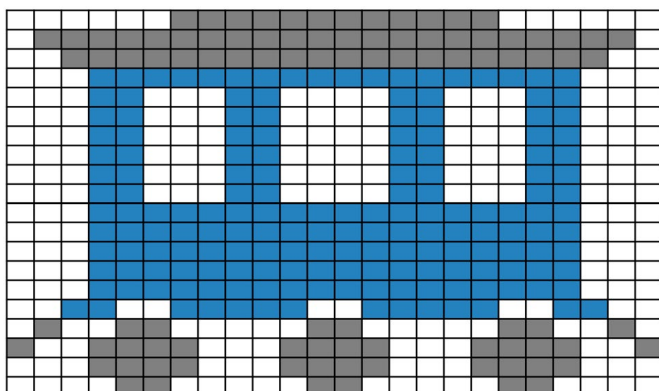


Chart C

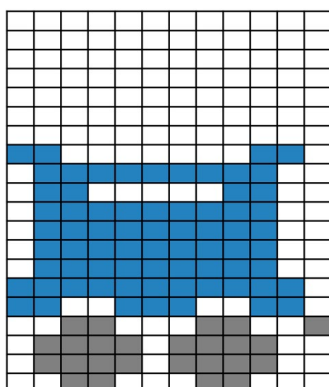


Chart key






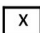
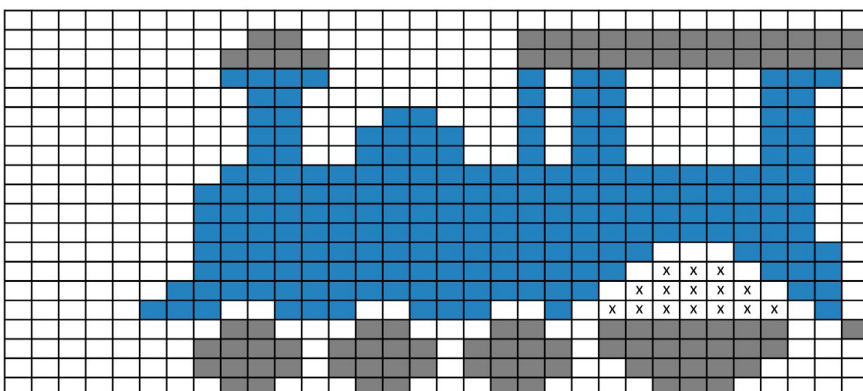
-  MC1 (col 129)
-  MC2 (col 951)
-  col 111
-  col 115
-  col 249
-  work in MC2, embroider with duplicate stitches in col 115

Chart D



There are now 276 (296) 316 (336) 344 sts on the needle. Work round in st st and adjust the stitch count to 275 (295) 310 (330) 340 sts on the first round by decreasing 1 (1) 6 (6) 4 sts. Work straight up for 3 (4) 5 (5) 5 cm and then begin decreasing for the yoke.

1st decrease round: *k3, k2tog*, repeat from * to * to the end of the round = 220 (236) 248 (264) 272 sts on the needle.

Now work chart E (opposite tracks). Continue in st st with MC 1 until the yoke measures 6.5 (7) 8 (9) 10 cm from the arm hole.

2nd decrease round: *k2, k2tog*, repeat from * to * to the end of the round = 165 (177) 186 (198) 204 sts on the needle.

Continue in st st until the yoke measures 8.5 (10) 12 (13.5) 14.5 cm.

3rd decrease round: *k1, k2tog*, repeat from * to * to the end of the round.

There are now 110 (118) 124 (132) 136 sts on the needle. Work 2 round in st st after the last decrease round, and mark the middle 12 (12) 14 (16) 16 sts on the front on the last round.

Next round: k to 1 st before the marked sts, turn work.

1st short row (WS): yo, p to 1 st before the marked sts, turn work.

2nd short row (RS): yo, k to 2 (2) 3 (3) 3 sts before yo, turn work.

3rd short row (WS): yo, p to 2 (2) 3 (3) 3 sts before yo, turn work.

Work 2nd and 3rd short row a total of 2 (3) 3 (3) 3 times (i.e. 3 (4) 4 (4) 4 turns at either side). Now turn work 1 st before the yo (at both sides) a total of 1 (1) 2 (2) 3 times.

Now work 1 round in st st, where the yo's are k2tog with the following st before the marked sts, and k2tog tbl with the previous st after the marked sts.

On the next round adjust the stitch count to 104 (112) 116 (124) 128 sts - i.e. decrease 6 (6) 8 (8) 8 sts evenly.

Change to size 2½ mm and work in ribbing (k2, p2) a total of 8 (8) 10 (10) 10 rounds.

Bind off in ribbing with an elastic bind off as follows: work 2 sts (k over k and p over p), *place the last 2 worked sts back on the left needle, k2tog tbl, work 1 st from left needle*, repeat from * to * all the way around until all sts have been bound off.

on the big wheel of the locomotive with duplicate stitches. Weave in all ends. Wash the sweater carefully and let it dry flat.

Finishing

Sew the holes under the arms. Embroider the last sts