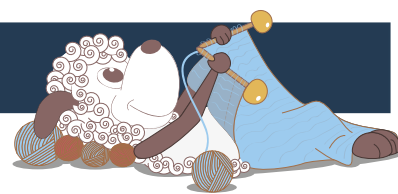


Kaprifolie - a beautiful leaf motif shawl



Design: Karen Skriver Lauger

Kaprifolie is a little shawl to cover your shoulders on a summer day, or to use as a scarf in autumn or winter. The shawl is a "three quarter" shawl, which is a shape that easily lies on the shoulders. The pattern contains directions for a "normal" triangular shawl as well. Kaprifolie (or caprifolium in English) is a twining vine with oval, grey green leaves, which remind me of the leaf shapes that are a main feature of the lace pattern in the shawl.

4th English edition - May, 2015 © Filcolana A/S

Materials

100 g for the triangle and 150 g for the three-quarter shawl. Yarn: Anina in colour 2169

If you wish to knit the shawl bigger (this is easy to do) you should remember that you will need more yarn.

Circular needle 4 mm, 80 cm

Markers

Sizes

2 sizes, a triangular and a three-quarter shawl

The shawl (both shapes) is easy to make bigger by repeating the charts more times than the directions ask.

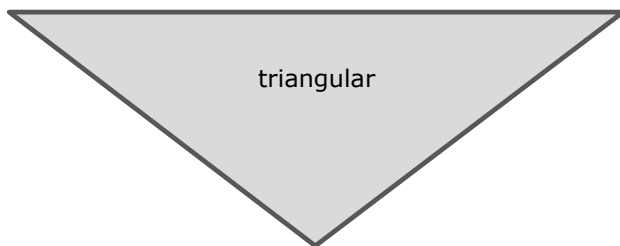
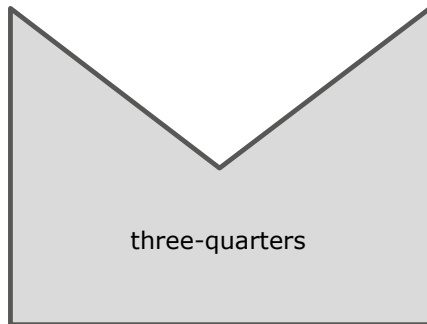
Measurements

Triangular: Width = 130 cm, length = 55 cm from neck to lower point

Three-quarters: Width = 130 cm, length = 40 cm from neck to lower point



Kaprifolie in 2 sizes



Gauge

This is a shawl, and thus the gauge isn't too big of an issue. Try to hit about 10 sts x 16 rows = 5x5 cm in the lace pattern after blocking. The large leaf motif from chart A is approximately 11 cm tall and 8 cm wide after blocking.

Special abbreviations

stbl (decrease): Slip 1 stitch knitwise, put st back on left needle (still twisted), and k2tog tbl

sl1, k2tog, pssso (3 sts to 1 st): Slip 1 st knitwise, k2tog, pass the slipped stitch over

sl 2, k1, pssso (centered decrease): Slip 2 sts knitwise (as if to k2tog), k1, pass the slipped sts over

SM: Slip the marker from the left to the right needle

Charts and chart key

All the charts show the lace pattern from the right side, and all charts only show odd rows (right side rows). All wrong side rows (even rows) are worked in purl apart from the edge sts, which are always knit. The edge sts are not shown in the charts and are only worked at the beginning and the end of each row.

About the pattern

The shawl is worked from the central point at the neck and out and down. All lace patterns are given in charts.

Directions for knitting

For the three-quarter shawl

Cast on 10 sts. The outermost 2 sts at either side are the edge sts and these are always knit.

First row (from the wrong side): k2 (=edge sts), p2, place marker, p2, place marker, p2, k2 (=edge sts)

The work is now divided into three sections divided by

markers.

Begin working the lace pattern. Start with Chart A, row 1 (right side). Work as follows:

k2 (=edge sts), Chart A, SM, Chart A, SM, Chart A, k2 (=edge sts)

Remember that all wrong side rows are purled apart from the edge sts, which are always knit.

Work the lace pattern from Chart A until all rows have been worked (last row is a wrong side row (row 66)).

Work from Chart B as follows:

k2 (=edge sts), Chart B, SM, Chart B, SM, Chart B, k2 (=edge sts)

The sts in the marked box are the pattern repeat and are repeated 6 times in each section the first time you work Chart B. For each repeat of Chart B in the height you will need to add a repeat of the sts in the marked box.

Work 2 full repeats in the height of Chart B (last row is a wrong side row (row 20)).

Note: this is an easy place to increase the size of the shawl by working more repeats of Chart B in the height.

Work from Chart C as follows:

k2 (=edge sts), Chart C, SM, Chart C, SM, Chart C, k2 (=edge sts)

The sts in the marked box are the pattern repeat and these are repeated 8 times in each section.

Work one full repeat of Chart C in the height. Stop after working the last right side row (row 23).

Note: If you wish to add further repeats of Chart C, you should only repeat rows 5-24 of the chart and remember to add a repeat of the sts in the marked box for each time you complete a repeat in the height.

Bind off using an elastic bind off on the next row (wrong side row).

For the triangular shawl

Cast on 8 sts. The outermost 2 sts at either side are the edge sts and these are always knit.

First row (from the wrong side): k2 (=edge sts), p2, place marker, p2, k2 (=edge sts)

Work as for the three-quarter shawl, but with two sections instead of three.

Finishing (both shawls)

Weave in all ends. Wash the shawl gently and block it so that the lace pattern opens up and the shape is formed.

Happy knitting

Chart A
Large leaf pattern

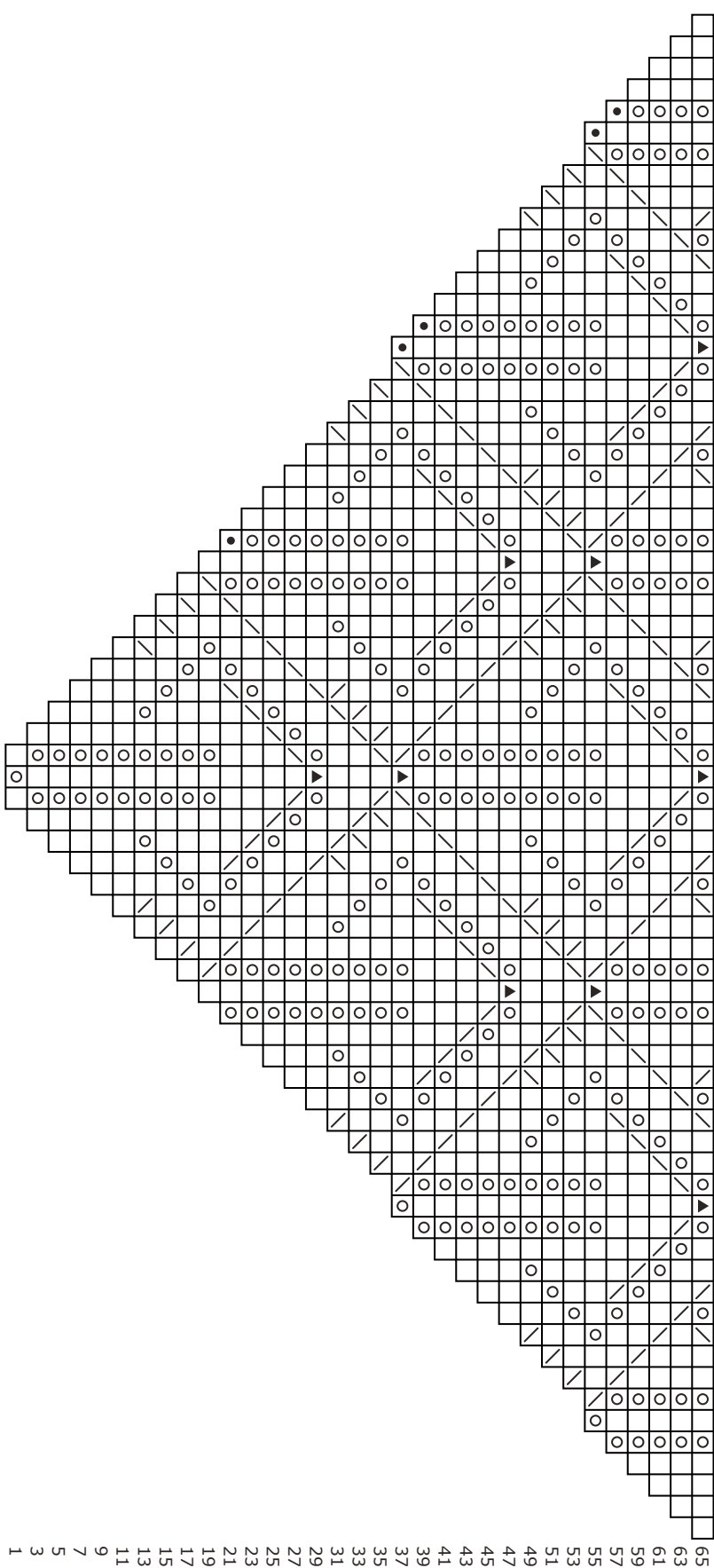


Chart Key

- ☐ knit on the RS, purl on the WS
- ☐ yarn over
- ☐ k2tog
- ☐ stbl
- ☐ sl1, k2tog, pssso
- ☐ yarn over, knit the yarn over on next row
- ☐ sl 2, k1, pssso

Chart B

Small leaf pattern

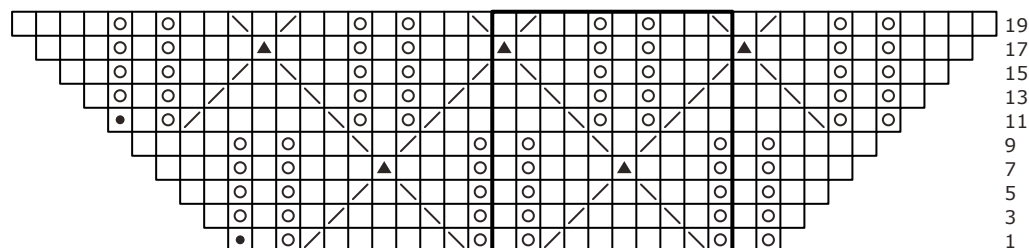


Chart C

Net pattern

