

# filcolana

OBSESSED WITH QUALITY YARN SINCE 1952



Design: Maria Bach Jensen

## Kronborg

1st edition - August 2021 © filcolana  
English translation: June Thomsen

**Kronborg is based on the Rosenborg children's blouse from our AW20 collection. The model is short with wide sleeves and a high neck and is beautiful on most female bodies, regardless of it being used with a pair of jeans or a skirt. When knitted in Merci and Tilia held together, a light and comfortable blouse emerges, which can be used for both every day wear and festivity.**

### SIZES

S (M) L (XL)

### MEASUREMENTS

Fits chest sizes: 80-86 (87-96) 97-106 (107-116) cm

Chest circumference: 86 (96) 107 (116) cm

Sleeve length: 48 (48) 50 (50) cm

Length: 53 (54) 55 (56) cm

### GAUGE

19 sts and 28 rows moss stitch on 4 mm needles  
= 10 x 10 cm.

Needle sizes are for guidance only. If you have more sts on 10 cm, change to a larger needle. If you have fewer sts on 10 cm, change to smaller needles.

### MATERIALS

#### Yarn from Filcolana

250 (300) 300 (350) g **Merci** colour 602 (Fern)

125 (150) 150 (175) **Tilia** colour 327 (Sage)

Use one string of each base throughout work.

**Circular needles** 3.5 mm and 4 mm cir

**Doublepointed needles** 3.5 mm and 4 mm dpns (can be replaced by using magic loop technique on a long circular needle).

**14 stitch marker or contrast coloured string.**

**Waste yarn for cast on.**

---

## Technical

---

### SPECIAL TECHNIQUES

#### German short rows

Knit to where the short row should be placed. Turn work and slip st onto right needle with yarn in front. Tug the yarn up and over the needle. This creates a double stitch. Continue working the row as instructed in pattern. On next row work the double sts together (German short rows are worked the same on both right sides and wrong sides).

### CHART

See page 6.

---

## Workflow

---

The body is knit in the round bottom up, all the way to the armholes.

Front and back is divided and knit separately. Sts are picked up along each armhole, which is knit top-down.

As a final touch sts are picked up along the neckline and the neckline is knit.







# Pattern

## MOSS STITCH

**1st round:** \*k1, p1\*, repeat from \* to \*.

**All additional rounds:** knit the purl sts and purl the knit sts.

## BODY

With the waste yarn and 3.5 mm needles, cast on 91 (101) 113 (123) sts for Italian cast on.

Knit 2 rows.

Break the waste yarn.

With one string of each yarn (Merci and Tilia) purl 1 round. Do not turn work, but continue by knitting in the round.

Purl 2 rounds.

**Next round:** \*p1, insert right needle below the first st knit with Merci and Tilia (3 rows below) and knit a st\*, repeat from \* to \*, until you have 1 st left. Pick up the st below and knit it together with the last st = 180 (200) 224 (244) m.

**Next round:** P1 and place a marker at beginning of round. Continue knitting ribbing (\*k1, p1\*) until ribbing measures 5 cm. Now carefully cut and remove scrap yarn rows.

Change to 4 mm circular needles and knit 1 round. Place side marker after 90 (100) 112 (122) sts.

Now knit in the round as follows:

Knit moss st over 6 (9) 13 (16) sts, place marker (pm), knit side panel A over the next 18 sts, pm, knit moss st over 6 (8) 9 (11) sts, pm, knit centre panel over the next 30 (30) 32 (32) sts, pm, knit moss st over 6 (8) 9 (11) sts, pm, knit side panel B over the next 18 sts, pm, knit moss st over 12 (18) 26 (32) sts, pm, knit side panel A over the next 18 sts, pm, knit moss st over the next 6 (8) 9 (11) sts, pm, knit centre panel over next 30 (30) 32 (32) sts, pm, knit moss st over 6 (8) 9 (11) sts, pm, knit side panel B over the next 18 sts, pm, knit moss st over 6 (9) 13 (16) sts.

Bind off for armholes when work measures 35 cm, like this:

Bind off 2 sts, knit pattern and moss st to 2 sts before side marker, bind off 4 sts, knit pattern and moss st to 2 sts before beginning of round marker, bind off 2 sts and break yarn.

Let back sts rest on a stitch holder and continue with the front piece.

## FRONT

From right side of the front and with Tilia and Merci held together, bind off 1 st at beginning of the next 6 rows (3 in each side) to shape the armhole, while knitting textured knit and moss sts. When the last sts have been bound off, knit to the last st on both sides (edge sts) = 80 (90) 102 (112) m.

\*

Knit until the armhole measures 12 (13) 13 (14) cm. Finish with a wrong side row.

**Next row (RS):** Knit 29 (34) 39 (44) sts, bind off 22 (22) 24 (24) sts, continue pattern over remaining sts.





Now, finish each shoulder as follows:

### **Right shoulder**

**Next row (WS):** Knit as sts indicate.

Bind off on the following right sides like this: Bind off 3 sts once, 2 sts twice, and 1 st twice = 20 (25) 30 (35) sts. **AT THE SAME TIME**, when armhole measures 18 (19) 20 (21) cm bind off 6 sts at beginning of each of the following wrong side rows, until all sts are bound off.

### **Left shoulder**

From wrong side and with one string of Tilia and Merci held together, bind off 3 sts, and continue pattern over remaining sts.

**Next row (RS):** Knit pattern over all sts.

Now bind off on the following wrong sides as follows: 2 sts twice and 1 st twice = 20 (25) 30 (35) sts.



**AT THE SAME TIME**, when armhole measures 18 (19) 20 (21) cm bind off 6 sts in beginning of each of the following right sides, until all sts are bound off.

### **BACK**

Knit as front till \*.

Knit until armhole measures 17.5 (18.5) 19.5 (20.5) cm. Finish with a wrong side row.

**Next row (RS):** Knit 20 (25) 30 (35) sts, bind off the next 40 (40) 44 (44) sts, knit pattern over the remaining sts.

Finish the shoulders separately like this:

### **Left shoulder**

**Next row (WS):** Bind off 6 sts, follow pattern over remaining sts.

Bind off 6 sts at beginning of the following wrong sides, until all sts are bound off.

### **Right shoulder**

From wrong side and with one string of Tilia and Merci held together, follow pattern over all sts. Bind off 6 sts at beginning of the following right side rows, until all sts are bound off.

Sew the front and back shoulder pieces together with Kitchener sts.

### **SLEEVES**

With 4 mm dpns and one string of Tilia and Merci pick up 76 (80) 84 (88) sts along the first armhole. Begin and finish at the top of the shoulder. Knit in the round and place marker at beginning of round (M1) and another under the arm after 38 (40) 42 (44) sts (M2).

Now knit German short rows (GSR) as follows:

From right side knit moss sts over 6 (6) 8 (8) sts, turn work, GSR, knit moss st from right side to 6 (6) 8 (8) sts after M1, turn work, GSR, knit moss sts from right side to 6 (6) 8 (8) sts after last turn, turn work.

Continue German short rows, and turn 6 (6) 8 (8) sts after each turn in the same side, till you turn 2 (4) 2 (4) sts before M2 in both sides.

Continue knitting moss st from the right side and begin round at M2.

Continue with moss sts until sleeve measures 36 (36) 37 (37) cm from armpit. Knit 1 round and decrease





22 sts evenly by knitting 2 sts together = 54 (58) 62 (66) sts.

Change to 3.5 mm needles and knit ribbing (\*k1, p1\*), until ribbing measures 12 (12) 13 (13) cm.

Bind off with Italian bind off like this:

Measure a tail at least 3 times the length to be bound off. Thread tail onto a tapestry needle.

1. Insert tapestry needle into 1st st (knit st) on left needle as if to purl, pull the yarn through.
  2. From behind work insert needle between 1st and 2nd st. Pull needle and yarn to front of work.
  3. Insert tapestry needle from front into 2nd st (purl st) and out on the back.
  4. Insert tapestry needle into 1st st (knit st) as if to knit, slip st off needle.
  5. From the front insert tapestry needle - from right to left - into the front leg of the 2nd st (knit st), pull yarn through.
  6. Insert tapestry needle into 1st st (purl st) as if to purl, slip st off needle.
- Repeat steps 2-6, till you have 1 purl st left on LH needle. Finish bind off like this:
7. From front insert tapestry needle - from right to left - into the first bound off st, pull yarn through.
  8. Repeat step 6.

Carefully weave in the loose end.

Knit second sleeve accordingly.

## NECKLINE

With 4 mm circular needles pick up approx. 94 (94) 112 (112) sts along the neckline (jump past approx. every 4th st).

The number of picked up sts must be divisible by 2.

Knit ribbing (\*k1, p1\*) in the round, until neckline measures 9 (9) 10 (10) cm.

Bind off with Italian bind off as on the sleeves.

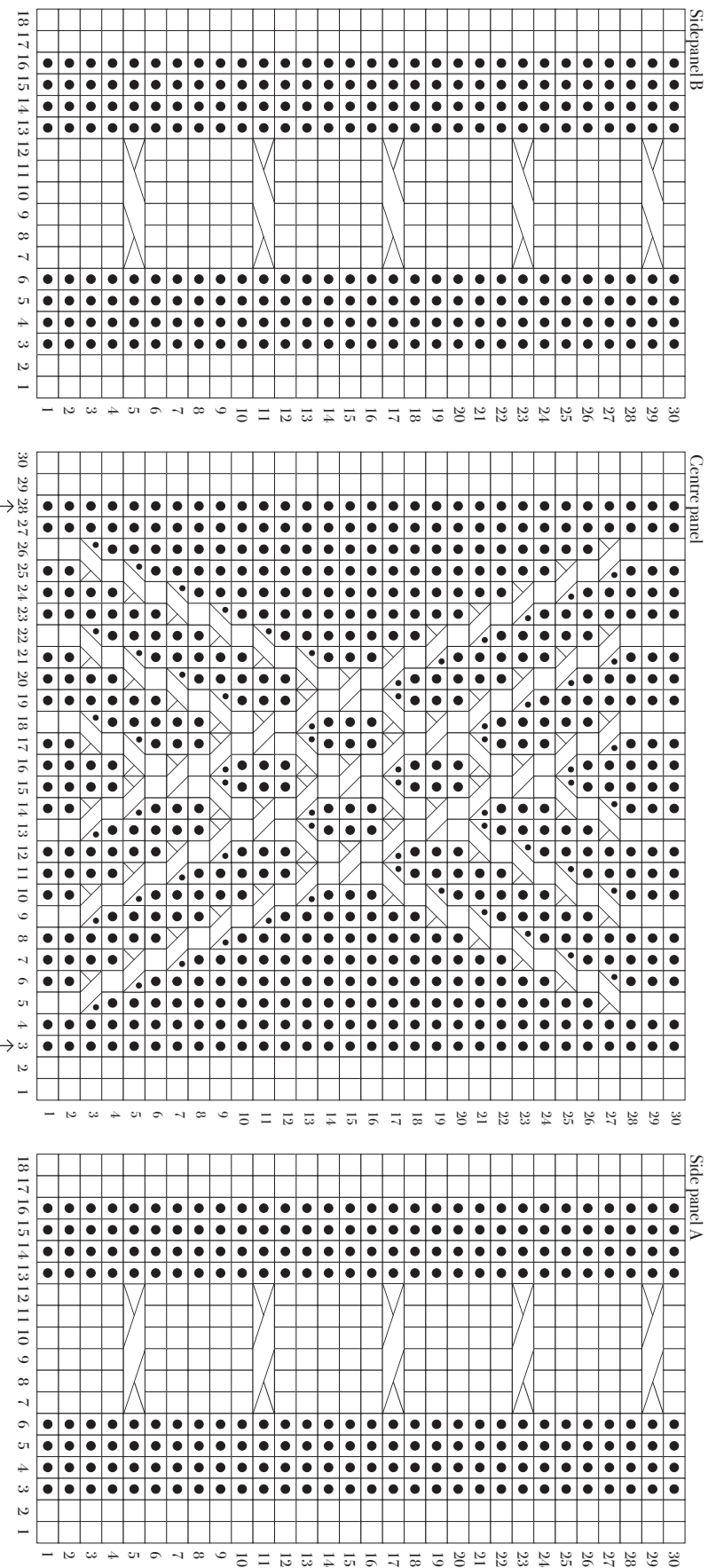
## FINISHING

Weave in loose ends.

Wash the blouse according to washing instructions on the labels and lay the blouse to dry flat on a towel in order for the pattern to stretch evenly.

## CHART

See next page.



☐ Knit on RS, purl on WS

☒ Purl on RS, knit on WS

☐ Slip 3 sts to cable needle and hold to back of work, k3, k3 from cable needle

☐ Slip 1 st to cable needle and hold to back of work, k1, p1 from cable needle

☐ Slip 1 st to cable needle and hold to front of work, p1, k1 from cable needle

☐ Slip 1 st to cable needle and hold to front of work, k1, k1 from cable needle

↑ Size L and XL only

Centre panel is 32 sts, at arrows purl one more st, meaning begin centre panel k2, p3 and end p3, k2