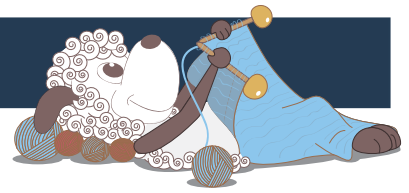


Achillea - a very simple cowl



Pattern: Nanna Gudmand-Høyer

A simple and very quickly knit cowl or cape. Let it drape open like a very large collar or use a shawl pin to gather it at the neck like a cape. Use the cowl as a combined hat and scarf - or double it up around your neck for extra warmth and comfort.

1st edition - August 2013, © Filcolana A/S

Materials

400 g of Naturgarn by Filcolana in color 246
Circular needles 8 and 9 mm, 60 cm or 80 cm

Size

One size: Height: 53 cm, circumference: 114 cm

Gauge

10,5 sts and 17 rows in stockinette stitch on a 9 mm needle = 10 x 10 cm.

Directions for knitting

The cowl is knit in the round. You can splice the ends together when changing skeins of yarn to avoid unnecessary finishing at the end.

Cowl

Cast on 120 sts on a 8 mm circular needle and join in the round. Work 12 rounds of k1, p1 ribbing. Change to a 9 mm circular needle and continue in stockinette stitch until the work measures 45 cm. Change to 8 mm circular needle and work another 12 rounds of k1, p1 ribbing. Bind off.

Montering

Weave in the ends. Gently rinse the work and leave it to dry on a flat surface.

