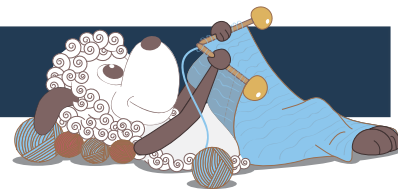


# Delft - a cardigan with a Dutch tile pattern



Design: Rachel Søgaard

*A beautiful and light stranded cardigan that reminds us of the beautiful white and blue Dutch tiles. The stranded pattern combined with the lovely thin yarn gives this design a light and delicate look. The cardigan is worked in the round and then steeked. The cut edges are covered with ribbons to give the cardigan a beautifully polished finish. A truly gorgeous design with all the finesse of really good knitting design.*

4<sup>th</sup> English edition - May 2020 © Filcolana A/S  
English translation: Signe Strømgaard

## Materials

Saga by Filcolana:

Main color (MC): 200 (200) 200 (250) g in color 950 (Very Light Grey)

Contrast color (CC): 100 (100) 100 (150) g in color 228 (Smoke Blue)

2,5 and 3 mm circular needle, 60 cm long

2,5 and 3 mm double-pointed needles

Maskemarkører eller kontrastfarvet tråd

1,25 m of ribbon, 11 mm wide

10 buttons

## Sizes

S (M) L (XL)

## Measurements

Sweater, body: 81-88 (89-96) 97-104 (105-112) cm

Sweater, body: 89 (96) 103 (112) cm

Sleeve length: 45 cm (all sizes)

Total length: Approx. 58 (60) 62 (64) cm

## Gauge

30 sts and 33 rows in pattern on 3 mm needles = 10 x 10 cm



### Directions for knitting

The design is worked from the bottom up. First the body is worked to the armholes, then the sleeves are worked. Finally body and sleeves are joined on a circular needle and the yoke is worked with raglan decreases. Finally the cardigan is steeked and the front edges are knit.

### Body

Cast on 260 (280) 300 (328) sts on a 2,5 mm circular needle with MC.

Work back and forth in ribbing:

**Row 1 (WS):** K1, \*p2, k2\*. Repeat from \* to \*. End with p2, k1.

**Row 2:** K3, \*p2, k2\*. Repeat from \* to \*. End with k1.

Repeat Row 1 and 2 until the work measures 6 cm.

Change to a 3 mm circular needle and continue in stockinette stitch in the following way:

**Work 1 row with MC:** Increase 1 (1) 1 (3) sts across row and cast on 5 new sts in extension of the sts on the needle and join in the round. These 5 sts are steeking sts, which are worked in a different pattern from the rest of the body. The steeking sts can be worked in vertical stripes, alternating 1 stitch in MC and 1 in CC. The steeking sts are not counted as part of the pattern.

There are now 261 (281) 301 (331) sts on the needle (not including the 5 steeking sts).

Work the body straight in the Chart A pattern until the work measures 39 (40) 41 (42) cm. End on Row 4 or 9 of the pattern.

Bind off for the armholes on the next row: Work 58 (63) 68 (74) sts in pattern, bind off 15 (15) 15 (17) sts work in pattern until there are 115 (125) 135 (149) sts on the needle after the bound off sts, bind off 15 (15) 15 (17) sts, work in pattern to end of row. Let the body rest while the sleeves are worked.

### Sleeves

Cast on 60 (60) 64 (64) sts on 2,5 mm double-pointed needles using MC. Join in the round and place a marker for the beginning of the round.

Work in k2, p2 ribbing for 6 cm.

Change to 3 mm double-pointed needles and continue in stockinette in the Chart C pattern. At the same time increase 0 (0) 2 (2) sts on the 1st round.

Work an increase round every 10th (8th) 10th (8th) round a total of 7 (10) 10 (13) times.

**Increase round:** K1, M1, work in pattern to end of round, M1.

New sts are worked in pattern. There are now 74 (80) 86 (92) sts on the needle.

Work straight in pattern until the sleeve measures 45 cm (all sizes). End on Row 4 or 9 of the pattern.

**Bind off for the armholes on the next row:** Bind off 8 (8) 8 (9) sts, work in pattern to the last 7 (7) 7 (8) sts, bind off 7 (7) 7 (8) sts.

Let the first sleeve rest and work a second sleeve the same way as the first.

Chart A

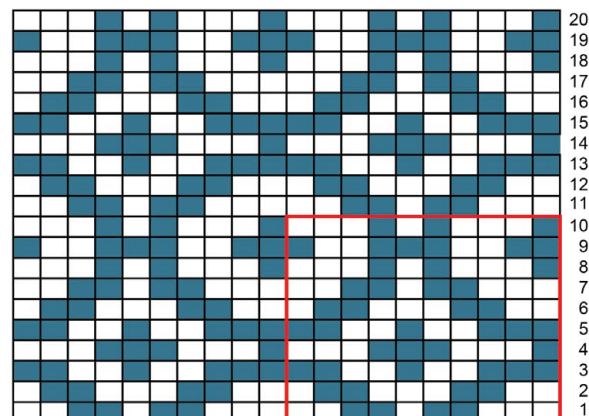


Chart B

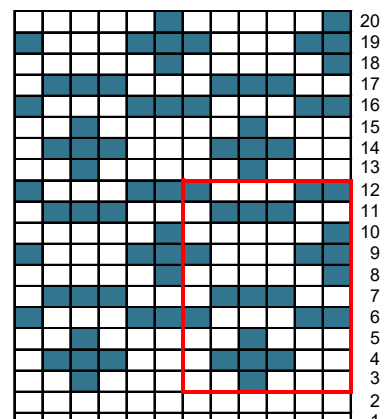
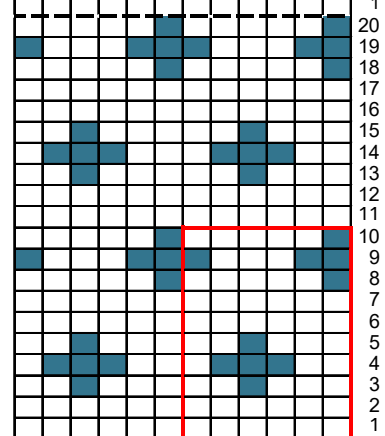


Chart C



↑  
begin here

- ☐ stockinette stitch in MC
- ☒ stockinette stitch in CC



**Yoke**

Join the sleeves with the body on the circular needle, over where sts were bound off for the armholes on the body. Place a marker each of the 4 places where body and sleeves meet.

There are now 349 (381) 413 (447) sts on the needle.

Work the body sts in the Chart A pattern and the sleeve sts on the Chart C pattern. Work one stitch on either side of each of the 4 markers in MC on all rounds. Please note: On the sleeves, Chart C is worked as a continuation of Chart B.

**Decrease round:** \*Work to 2 sts before marker, k2tog with MC, skp with MC\*. Repeat from \* to \* a total of 4 times, work to end of round.

Work a decrease round every other round a total of 23 (24) 25 (27) times. Work one round straight after the last decrease round. There are now 65 (189) 213 (231) sts on the needle.

Bind off the steeking sts and work back and forth in pattern. Continue working decreases as above every RS row. Bind off 25 (28) 30 (33) sts at the beginning of the first 2 rows. Then bind off 2 (3) 3 (4) sts at the beginning of the next 2 rows. Then bind off 1 stitch at the beginning of each row, while continuing the raglan decreases until there are no more sts on the fronts. Break the yarn.

**Finishing**

**Neck edge:** Pick up and knit sts along the fronts for the neck edge using a 2,5 mm circular needle and MC. Work across the sts on the needle as well and adjust the total number of sts on the needle, so it is divisible by 4. This way the 4 sets of MC raglan sts can be worked as k2 in the rib.

**Rib:** K1, \*p2, k2\*. Repeat from \* to \*. End with p2, k1.

Work a total of 2,5 cm of rib. Bind off in pattern.

**Steeking:** The steek can either be cut now or after completion of the front edges.

Crochet a row of double crochet (UK term) on either side of the center steeking stitch. Crochet into the center of the stitch, so there are 2 sts between the crocheted rows. Cut with scissors down the center.

**Button band:** Pick up and knit sts along the left front edge, between the first stitch of the front and the last of the steeking sts using a 2,5 mm circular needle and MC. Pick up approx. 3 sts for every 4 rows. The number of sts must be divisible by 4 plus 2. Work back and forth in rib, the same way as for the Neck edge for 2,5 cm. Bind off in pattern. Mark the placement of 10 buttons along the edge. The top and bottom buttons must be approx. 4-6 sts from the edge.

**Buttonhole band:** Pick up and knit the same number of sts as for the button band along the right front edge using a 2,5 mm circular needle and MC. Work the band the same way as the button band, but work 10 buttonholes when the edge measures 1 cm across



from where the placement of the 10 buttons are marked on the button band.

**Buttonhole:** Bind off 2 sts, cast on 2 new sts over where the sts were bound off on the following row.

Weave in all ends. Sew the hole under each sleeve.

Fold the steeked edges to the WS and place the ribbon over them. Sew the edges of the ribbon to the WS with small, invisible sts.

Gently rinse the work, put in through a (dry) spin cycle in the washing machine and lay it on a flat surface to dry.

Sew in the buttons.