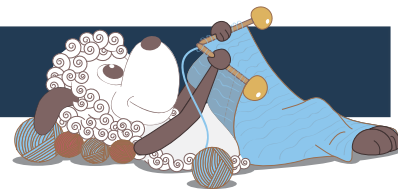


# Lille Kjerstin - a Bohus inspired sweater



Design: Rachel Søgaard

*The designer talks about Lille Kjerstin: "I've been very interested in the beautiful Bohus sweaters for a long time. The amazing designs were originally created in Bohuslän (now Västra Götaland) in Sweden and the original sweaters were knitted on very small needles. The lovely and quite unique colorwork patterns were created using strategically placed purl stitches on the right side, which created little "pearls" in the fabric. For this design I've played with the same technique, but in much thicker yarn."*

3<sup>rd</sup> English edition - October 2019 © Filcolana A/S  
English translation: Signe Strømgaard

## Materials

Peruvian Highland Wool by Filcolana:

Colour A: 150 (200) 200 (250) 250 (300) g

Colour B: 50 g

Colour C: 50 g

Colour D: 50 g

Colour E: 50 g

4 mm circular needle, 40 and 60 cm

5 mm circular needle, 60 cm

4 mm and 5 mm double-pointed needles

Stitch holders

Stitch markers or loops of contrasting yarn

## Brown and red version (photos on this page)

Colour A: 973 (Nougat melange)

Colour B: 977 (Marzipan melange)

Colour C: 817 (Cinnamon melange)

Colour D: 334 (Light Blush)

Colour E: 345 (Rosewood)

## Grey-brown and purple (photo on page 3)

Colour A: 978 (Oatmeal)

Colour B: 815 (Lavender Grey)

Colour C: 816 (Moor)

Colour D: 318 (Ballerina)

Colour E: 805 (Erica)



## Sizes

2 (4) 6 (8) 10 (12) years

## Measurements

Sweater, chest: 60 (65) 70 (75) 80 (85) cm

Sleeve length: 25 (28) 31 (34) 38 (42) cm

Total length: 39 (41) 45 (47) 51 (54) cm

## Gauge

16,5 sts and 25 rows in stockinette stitch on 5 mm needles = 10 x 10 cm.

## Directions for knitting

The sweater is worked in the round from the top down. Neck edge and yoke are worked first, then the work is split into sleeves and body, which are then finished separately.

## Yoke

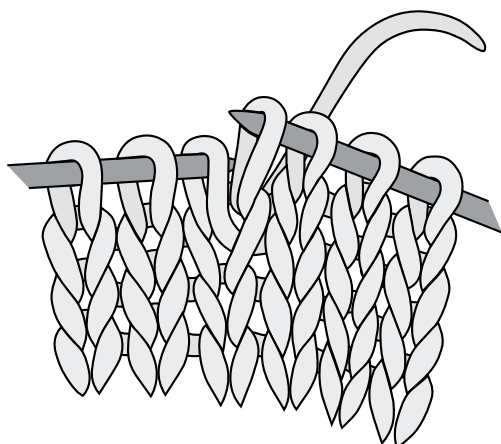
Cast on 60 (62) 66 (72) 78 (84) sts in the main color (here color 978) on a 4 mm circular needle. Join in the round and place a marker for the beginning of the round. Work in k1, p1 ribbing until the work measures 3 cm. Change to a 5 mm circular and work 1 (1) 2 (2) 4 (4) rounds of stockinette stitch while decreasing 6 (2) 0 (0) 0 (0) sts evenly across the first round. Continue in the charted pattern with increases as shown. The chart is worked a total of 18 (20) 22 (24) 26 (28) times per round.

When the 37 round of the chart have been worked, there are 144 (160) 176 (192) 208 (224) sts on the needle. Work another 0 (0) 0 (0) 2 (4) round in the main color.

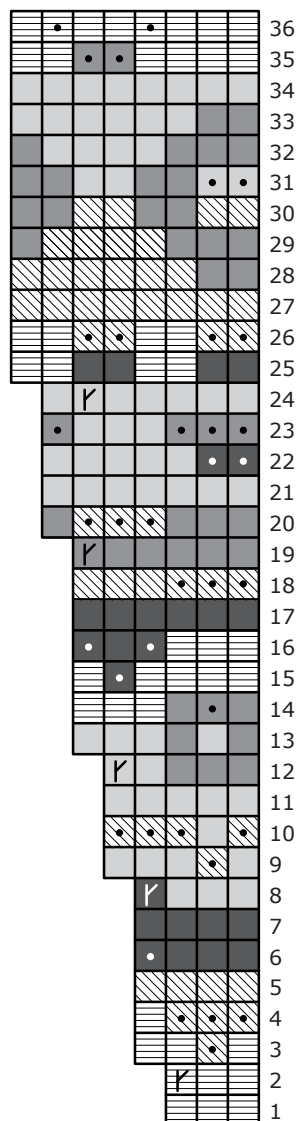
## Divide the work

Place 30 (34) 38 (42) 46 (50) sts on a stitch holder (for left sleeve), cast on 8 new sts (all sizes), knit 42 (46) 50 (54) 58 (62) sts (for front), place the next 30 (34) 38 (42) 46 (50) sts on a stitch holder (for right sleeve), cast on 8 new sts (all sizes), knit 42 (46) 50

## Increase



## Chart - pattern on yoke



- Colour A
- Colour B
- Colour C
- Colour D
- Colour E
- Purl in the relevant colour
- Increase: Insert needle in right side of stitch below next stitch, k1 in this stitch, then k1 in stitch on needle



(54) 58 (62) sts (for back).

## Body

Continue in the round in stockinette stitch across the 100 (108) 116 (124) 132 (140) sts of the body for a total of 17 (19) 22 (24) 26 (28) cm measured from the division of the work. Change to a 4 mm circular needle and work in k1, p1 ribbing for a total of 4 (4) 5 (5) 5 (5) cm. Bind off loosely or with a sewn bind off: Break the yarn so you have tail approx. 3 times as long as the edge you need to bind off. Thread the tail onto a wool needle. Insert the needle through the first stitch on the needle as if to purl, and pull the yarn through the stitch, and let the stitch fall off the needle. \* Insert the needle through the second stitch on the needle as if to knit, through to the WS of the work and then through the first stitch on the needle as if to purl. Pull the yarn through the stitch and let the first stitch fall off the needle. Repeat from \* to \* until all the stitches have been bound off.

## Sleeves

Place the 30 (34) 38 (42) 46 (50) sts from one sleeve onto 5 mm double-pointed needle and pick up and knit 8 sts (all sizes) from under the sleeve = 38 (42) 46 (50) 54 (58) sts on the needle.

**Note:** To avoid holes or elongated sts between the newly picked up stitches and the stitches from the yoke, you can pick up an additional stitch on either side of the 8 sts, which you then decrease away on the first round of knitting.

Work 2 (6) 6 (8) 8 (10) rounds straight in stockinette stitch (or longer, if you want a longer sleeve).

Place a marker around the 2 centre sts under the sleeve, to mark the beginning of the round.

Work a decrease round: Knit the marked sts, k2tog, knit to the last 2 sts before the marked sts, skp.

Work a decrease round every 8th (8th) 10th (10th) 10th (10th) round until there are 28 (32) 36 (38) 40 (42) sts left on the needle. Change to 4 mm double pointed needles when the sleeve measures 20 (23) 26 (29) 33 (37) cm. Work 5 cm of k1, p1 ribbing. Bind off loosely or with a sewn bind off.

Work the second sleeve the same way.

## Finishing

Weave in the ends.

Gently rinse the finished work, put it through a (dry) spin cycle in the washing machine and lay it on a flat surface to dry.

