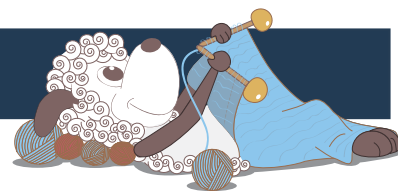


# Toulouse - a vintage inspired short sleeved top



Design: Rachel Søgaard

*Toulouse is a feminine and simple short-sleeved raglan top with a definite vintage vibe. It is perfect for warm summer days or as the first layer during the cooler months. The design can be worn with both jeans and skirts.*

2<sup>nd</sup> English edition - October 2019 © Filcolana A/S  
English translation: Signe Strømgaard

## Materials

200 (250) 250 (300) g Merci by Filcolana  
3 mm circular needle and double pointed needles

## Light peach version - this page

Merci colour 1130 (Light Peach)

## Blue version - page 2

Merci colour 1061 (Bluestone)

## Sizes

S (M) L (XL)

## Measurements

Overvidde: ca. 84 (90) 96 (103) cm

Hel længde: 55 (57) 59 (61) cm

## Gauge

25 sts and 35 rows in stockinette stitch on 3 mm needles = 10 x 10 cm

## Special abbreviations

Tbl: through the back loop

M1: Make 1. Increase one stitch by lifting the chain between sts onto the left needle and knitting it through the back loop.

Skp: slip 1 stitch, knit the next stitch, pass the slipped stitch over the knit one.





### Directions for knitting

The top is worked from the bottom up, in the round. The yoke has raglan shaping and a round neckline.

## Body

Cast on 226 (242) 258 (274) sts on a 3 mm circular needle. Join in the round and place a marker at the beginning of the round and one more after 113 (121) 129 (137) sts. Work k1 tbl, p1 ribbing for approx. 5 cm.

**Next round:** Work 113 (121) 129 (137) sts in the charted pattern (back), p1, knit 111 (119) 127 (135) sts, p1.

Continue as established until the work measures 37 (38) 39 (40) cm.

**Next round:** Bind off 3 sts, work in pattern to 3 sts before marker, bind off 6 sts (remove marker), knit to 3 sts before marker, bind off 3 sts.

Let the work rest on the needle, while the sleeves are worked.

## Sleeves

Cast on 76 (80) 84 (88) sts 3 mm double-pointed needles. Join in the round and place a marker at the beginning of the round. Work k1 tbl, p1 ribbing for 3 cm. Continue in stockinette stitch.

**Increase round:** K1, M1, knit to last stitch, M1, k1. Work an increase round every 6th round a total of 3 times. There are now 82 (86) 90 (94) sts on the needle.

Continue in stockinette stitch until the sleeve measures 8 cm.

**Next round:** Bind off 3 sts, knit to 3 sts before marker, bind off 3 sts.

Let the sleeve rest on a stitch holder and work a second sleeve the same way as the first.

## Yoke

Join the sleeves to the body over where sts were bound off for the armholes on either side of the body. Place a marker each of the 4 places where body and sleeves meet. There are now 366 (390) 414 (438) m. Begin the round at the marker between the back and left sleeve.

Work in pattern across back and in stockinette stitch across all remaining sts, while working the following decreases every other round: \*Skp, work to 2 sts before marker, k2tog\*. Repeat from \* to \* to end of round.

Work a total of 24 (26) 28 (30) decrease rounds. There are now 174 (182) 190 (198) sts on the needle.

**Next round - a round without decreases:** Knit 28 (28) 28 (28) sts (left sleeve), knit 20 (21) 22 (23) sts, bind off 19 (21) 23 (25) sts at the center of the front, knit to end of round.

Break the yarn and join it again right after the bound off sts on the front. Work back and forth, beginning with a RS round. Work decreases as above every RS round, while binding off sts at the beginning of every row to shape the neckline. Bind of 3 sts a total of 0 (0) 2 (4) times, then bind off 2 sts a total of 10



## Chart

Figure 1 shows a 10x10 grid representing a 2D lattice. The grid is divided into two regions by two vertical red lines. The left region (columns 3-5) and right region (columns 7-9) contain black dots. The middle region (column 6) is empty. The bottom row (row 1) contains black dots in columns 3-5 and 7-9. The bottom row (row 2) contains black dots in columns 3-5 and 7-9. The bottom row (row 3) contains black dots in columns 3-5 and 7-9. The bottom row (row 4) contains black dots in columns 3-5 and 7-9. The bottom row (row 5) contains black dots in columns 3-5 and 7-9. The bottom row (row 6) contains black dots in columns 3-5 and 7-9. The bottom row (row 7) contains black dots in columns 3-5 and 7-9. The bottom row (row 8) contains black dots in columns 3-5 and 7-9. The bottom row (row 9) contains black dots in columns 3-5 and 7-9. The bottom row (row 10) contains black dots in columns 3-5 and 7-9.

↑  
end here

begin here

- ☐ knit
- ☐ purl
- ☐ yarn over
- ☐ k2tog
- ☐ skp
- ☒ pattern repeat

(12) 10 (8) times, then 1 stitch a total of 4 (2) 2 (2) times. End on a WS row.

## **Neck edge**

Knit across the sts on the needle from the RS, then pick up and knit 1 stitch in every bound off stitch. Be sure to end up with an even number of sts.. Join in the round work 3 cm of k1 tbl, p1 ribbing. Bind off in pattern.

## **Finishing**

Sew up the little hole under each sleeve.

Gently rinse the work, put i through a (dry) spin cycle in the washing machine and lay it on a flat surface to dry.