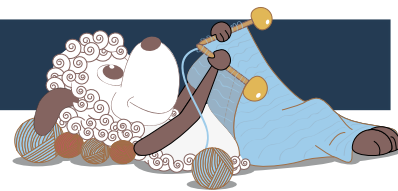


Avonia - an up and down bolero



Design: Rachel Søgaard

I like both the Indiecita and the Tilia yarn very much, and together they are even more amazing! The alpaca creates a soft drape and the mohair a wonderful lightness, and in combination the two make the most wonderful and luxurious fabric. This design can worn in two different ways: either as a shorter waist length style or as a longer hip length one, depending on which way you choose to turn it.

1st English edition - January 2015 © Filcolana A/S
English translation: Signe Strømgaard

Materials

Indiecita by Filcolana: 200 (250) 300 g in color 808
and 100 (100) 150 g in color 197
Tilia by Filcolana: 100 (100) 100 g in color 327 and
50 (50) 50 g in color 281
4,5 mm circular needle, 60 or 80 cm long
1 stitch marker, 1 stitch holder

Sizes

S/M (L) XL/XXL

Measurements

Body, chest: 84-96 (97-104) (105-117) cm
Wingspan (measurement from wrist to wrist) approx.
144 (150) 156 cm



Gauge

19 sts and 25 rows in stockinette stitch on 4,5 mm needles with one strand of each yarn held together = 10 x 10 cm.

19 sts and 28 rows in the slip stitch pattern on 4,5 mm needles with one strand of each yarn held together for both color A and color B = 10 x 10 cm.

Color A: Tilia 327 + Indiecita 808

Color B: Tilia 281 + Indiecita 197

Special Abbreviations

M1: Make 1. Increase one stitch by lifting the chain between sts onto the left needle and knitting it through the back loop.

Sl1 wyib: Slip 1 stitch purl-wise with the yarn held in back

Sl1 wyif: Slip 1 stitch purl-wise with the yarn held in front

Directions for knitting

The work starts with knitting one sleeve from the cuff up. Then the peplum/collar for one side is worked simultaneously with the back - in extension of the sleeve. Then the second sleeve is worked to the cuff. Derefter strikkes skød/krave til i den ene side, mens ryggen strikkes. Herefter strikkes det andet ærme, After this, stitches are picked up and knitted for the peplum/collar on the other side.

Sleeve - back + peplum/collar - sleeve

Cast on 40 (44) 48 sts with color A on a 4,5 mm circular needle. Work back and forth in stockinette stitch (the 1st row = WS).

Work an increase row on the 10th row: K1, M1, knit to the last stitch, M1, k1.

Work an increase row every 6th row another 15 (16) 17 times = 72 (78) 84 sts on the needle.

Continue straight in stockinette stitch until the sleeve measures approx. 45 (46) 47 cm ending on a WS row.

Cast on 40 (42) 44 new sts in extension of the sts on the needle at the end of the next row. Place a stitch marker between the 72 (78) 84 sleeve sts and the 40 (42) 44 new sts, which will become the peplum/collar. Turn and purl across all 112 (120) 128 sts.

Work the slip stitch pattern across the 72 (78) 84 sts on the right and work short rows across the 40 (42) 44 sts on the left:

Slip stitch pattern and short rows

Row 1 (color B - RS): K4, *sl1 wyib, k5*. Repeat from * to * to 2 sts before the marker, sl1 wyib, k1, slip marker, knit to end of row.

Turn, knit 40 (42) 44 sts, turn, knit 40 (42) 44 sts, turn.

Row 2 (color B): Knit 40 (42) 44 sts, slip marker, k1, *sl1 wyif, k5*. Repeat from * to * and end with sl1 wyif, k4.

Row 3 (color A): Knit all sts.

Row 4 (color A): Purl all sts.

Row 5 (color B): K1, *sl1 wyib, k5*. Repeat from * to * to 5 sts before marker, sl1 wyib, k4, slip marker, knit to end of row.

Turn, knit 40 (42) 44 sts, turn, knit 40 (42) 44 sts, turn.

Row 6 (color B): Knit 40 (42) 44 sts, slip marker, k4, *sl1 wyif, k5*. Repeat from * to * and end with sl1 wyif, k1.

Row 7 (color A): Knit all sts.

Row 8 (color A): Purl all sts.

Continue as established for a total of approx. 54 (58) 62 cm (measured along the right side of the work from the RS). The pattern is worked a total of 19 (21) 23 times. End on Row 8 (4) 8 of the pattern.

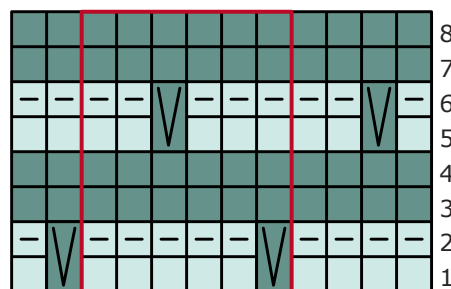
Let the 40 (42) 44 sts of the peplum/collar rest on a stitch holder.

Continue across the remaining 72 (78) 84 sts in color A and in stockinette stitch. Work straight for the same number of rows as on the opposite sleeve. Then work a decrease row: K1, k2tog, knit to the last 3 sts, k2tog, k1.

Work a decrease row every 6th for until there are 40 (42) 44 sts left on the needle. Work 9 rows straight.

Finish the sleeve with an i-cord edging:

Cast on 3 new sts in extension of the sts on the needle at the right side of the work. Cast them on to the left hand needle. *K2, sl1 wyib, k1 (the 1st stitch on the sleeve), pass the slipped stitch over. do not turn the work, but slip the sts back onto the left hand needle and repeat from * until all of the sleeve sts have been worked.

Chart

color A

color B

knit on the RS and purl on the WS

purl on the RS and knit on the WS

slip the stitch purl-wise with the yarn held in back on the RS, slip the same stitch purl-wise with the yarn held in front on the WS

pattern repeat

the remaining 3 sts can be sewn together with 3 newly cast-on sts at the beginning of the row using Kitchener stitch.

Pick up 40 (42) 44 sts along the cast-on edge of the first sleeve (without knitting them) and bind-off with an i-cord bind-off the same way as the other sleeve. Sew the sleeve seams.

Rib peplum/- collar

Pick up and knit 40 (42) 44 sts along the 40 (42) 44 sts that were cast-on at the top of the sleeve using color A. Continue picking up and knitting sts along the right side of the work along the stitches worked in the slip stitch pattern (pick up 1 stitch for every row – if this proves too difficult, you can pick up and knit 1 stitch for every 2 rows, then knit into the front and back of every stitch on the first row). Finally knit the 40 (42) 44 resting sts along the second side of the peplum/collar. The number of sts needs to be divisible by 4 + 2.

Work 21 (22) 23 cm of k2, p2 ribbing. End on a WS row.

Bind-off with an i-cord bind-off the same way as for the sleeve. Continue along the first peplum/collar, where you pick up 4 sts for every 6 rows (pick up sts from the edge as you go - without knitting them when picking them up) and bind-off with an i-cord bind-off.

Weave in the ends.

Gently rinse the finished work, put it through a (dry) spin cycle in the washing machine and lay it on a flat surface to dry.