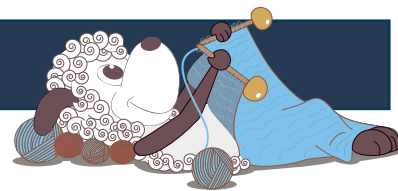


# Azalea - classic colorwork in gorgeous colors



Design: Rachel Søgaard

*A very classic colorwork design with drop shoulders. There are times when a classic sweater in gorgeous colors is just what the doctor ordered.*

1st English edition - January 2016, © Filcolana A/S  
English translation: Signe Strømgaard

## Materials

Main Color (MC): 350 (400) 450 (500) g of Peruvian Highland by Filcolana in color 977 (Marcipan)  
Contrast Color (CC): 200 (200) 250 (300) g of Peruvian Highland by Filcolana in color 283 (Calypso)  
7 buttons  
1 (1) 1,2 (1,3) m of grosgrain  
Circular needle 4 mm, 60 cm  
Circular needle 5 mm, 80 cm  
Double-pointed needles 4 and 5 mm  
Stitch markers

## Sizes

S (M) L (XL)

## Measurements

Body, chest: 81-88 (89-96) 97-104 (105-112) cm  
Sweater, chest: 84 (93) 102 (110) cm  
Sleeve length: 45 cm (alle str.)  
Total length: 53 (55) 57 (59) cm

## Gauge

21 sts and 22 rows in stockinette stitch in pattern on 5 mm needles = 10 x 10 cm.





## Directions for knitting

The body is worked in the round from the bottom up. Steeking stitches are cast on mid front. At the armholes stitches are bound off and then steeking stitches are cast on.

The sleeves are also worked in the round from the bottom up. All three sets of steeking stitches are cut open, then the sleeves are sewn to the armholes. Finally a neck edge and front edges are knit onto the cardigan.

## Body

Cast on 171 (189) 207 (225) sts on a 4 mm circular needle using MC. Work back and forth i ribbing:

Row 1 (WS): \*k1, p1\*. Repeat from \* to \*. End with k1.

Row 2: \*p1, k1\*. Repeat from \* to \*. End with p1.

Work Row 1 and 2 until rib measures 5 cm. End on a RS row.

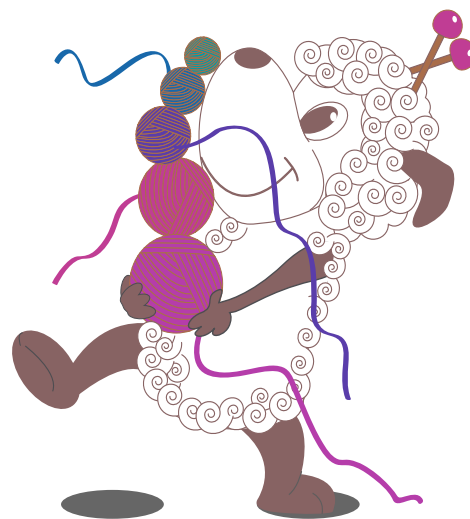
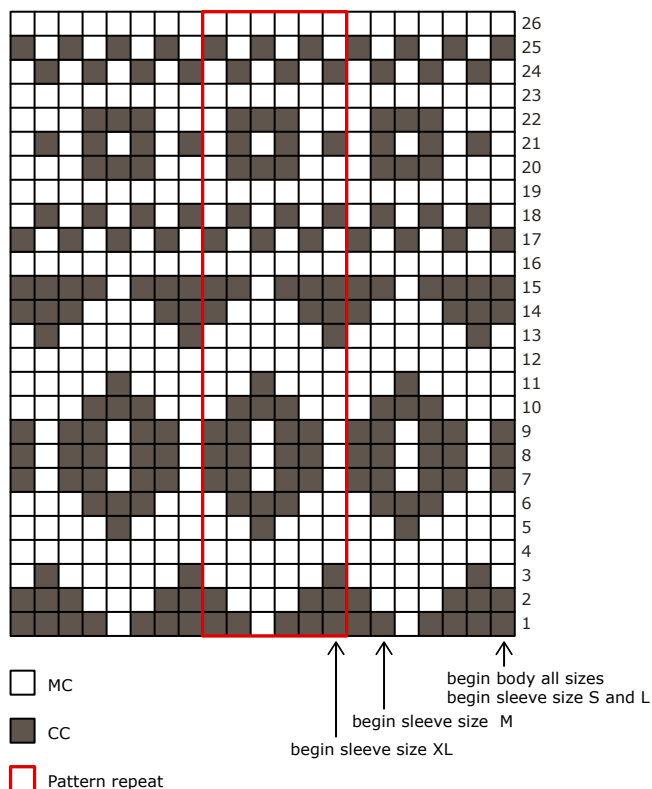
Change to a 5 mm needle and stockinette stitch. Cast on 3 new sts at the end of the row. These stitches are the steeking stitch which are not counted in the pattern. Work the steeking stitches in a different pattern such as vertical stripes alternating 1 stitch in each color.

Join in the round and place markers on either side of the steeking stitches.

Work in pattern until the body measures 34 (35) 36 (37) cm.



## Chart



Bind off stitches for the armholes on the next row: Knit 42 (46) 50 (56) sts, bind off 2 sts with MC, work in pattern until there are 83 (93) 103 (109) sts on the needle after the bound off sts, bind off 2 sts, Knit to end of round.

Next round: Cast on 3 new steeking stitches over where sts were bound off.

Work in pattern until the armholes measure 11 (12) 13 (14) cm.

Bind off the steeking sts mid front as well as the 9 (10) 12 (13) sts after these to begin shaping the neck. Work to end of round.

Now work back and forth in pattern while binding off for the neck edge. Bind off 9 (10) 12 (13) sts at the beginning of the next row.

Bind off 3 sts at the beginning of the next 2 rows, the 2 sts at the beginning of the next 2 rows, then 1 stitch at the beginning of the next 4 rows. Continue straight in pattern until the armholes measure 19 (20) 21 (22) cm. Bind off the steeking stitches at the armholes on the last row, and let the remaining stitches rest on the needle.

## Sleeves

Cast on 38 (40) 44 (48) sts on 4 mm double-pointed needles with MC. Join in the round and work in k1, p1 ribbing for 5 cm.

Change to 5 mm double-pointed needles, knit 1 round increasing 8 sts evenly distributed across the round.

Mark the first stitch of the round. This stitch is worked in MC throughout and is not part of the pattern. Now work chart beginning as indicated for your size.

Work and increase round every 4th row a total of 20 (21) 21 (21) times.

Increase round: K marked stitch, M1, work in pattern to end of round, M1.

New sts are worked in pattern.

There are now 86 (90) 94 (98) sts on the needle.

Work straight in pattern until the sleeve measures 45 cm or the desired length. Work 3 rows back and forth in reverse stockinette stitch (purl on RS, knit on WS). Bind off.

Work the second sleeve the same way as the first.

## Finishing

**Steeking:** Secure the steek either by hand or using a sewing machine - either using a regular zig-zag or a 3-stitch zig-zag. Sew on either side of the middle steeking stitch. Do this both mid front and on the armhole steeks. Cut the steeks.

**Shoulder seams:** Place the 26 (29) 31 (36) sts from the right front on a needle and the 26 (29) 31 (36) sts on right side of the back on another needle. Place the 2 sets of sts RS together and bind them off together using the 3-needle bind-off. Repeat for the left shoulder.

**Neck edge:** Pick up sts along the neck edge using a 4 mm circular needle and MC. First pick up and knit stitches along the right front, knit across the back of

neck stitches still on the needle, then pick up and knit sts along the left front. You need approx. a total of 89 (93) 101 (103) sts. There must be an odd number of sts. Knit 1 row from the WS, then work 18 rows of k1, p1 ribbing the same as at the hem. Bind off loosely. Fold the ribbing double and sew the bind-off edge to the WS using flexible stitches.

**Front edges:** Pick up and knit approx. 93 (97) 101 (105) sts from the RS along the left front using a 4 mm needle and MC. There must be an odd number of sts. Note: Pick up and knit stitches between the last stitch of the chart and the first steeking stitch. At the neck edge, sts are only picked up along the front half of the rib. Knit 1 row from the WS, then work 7 rows of k1, p1 ribbing. Bind off in pattern. Mark the placement of 7 buttons.

Pick up and knit the same number of sts along the right front edge and work in ribbing. Work buttonholes on the 4th row. Buttonhole: Work 2 sts together (knit or purl to fit the ribbing), yarn over. Finish the right front edge the same way as the left.

Sew the sleeves to the armholes. Fold the little edges of reverse stockinette over the cut steek edges on the WS and sew is down.

Cover the cut steek edges along the front edges with the grosgrain ribbon and sew it down. Sew in buttons. Weave in the ends.

Rinse the work, put it through a (dry) spin cycle and lay it on a flat surface to dry.

