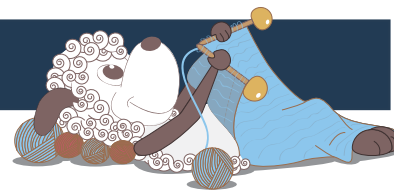


Klokkeblomst - a lovely cowl or cape



Design: Rachel Søgaard

This cowl is so long that it covers both neck and shoulders, but not so long that it is annoying when putting on a coat. To make a cape, simply continue at the end as described below.

2nd English edition - September, 2020 © Filcolana A/S
English translation: Signe Strømgaard

Materials

200 (300) 300 (400) g of Naturgarn by Filcolana in color 275 (apple green) or color 273 (pink)
8 mm circular needle, 60 cm long

Sizes

S (M) L (XL)

Measurements

Circumference at neck: 48 (56) 64 (72) cm
Circumference at lower edge: 108 (126) 144 (162) cm

Gauge

11 sts and 16 rows in stockinette stitch on a 8 mm needle = 10 x 10 cm

Directions for knitting

The cowl is worked from the top down.

Cowl

Cast on 60 (70) 80 (90) sts using an 8 mm circular needle. Join in the round and place a marker for the beginning of the round. Purl 1 round from the RS.

Work the chart. Skip the black squares, when working the chart from the bottom up, as these stitches do not appear until later, when some of the decreases are left out.

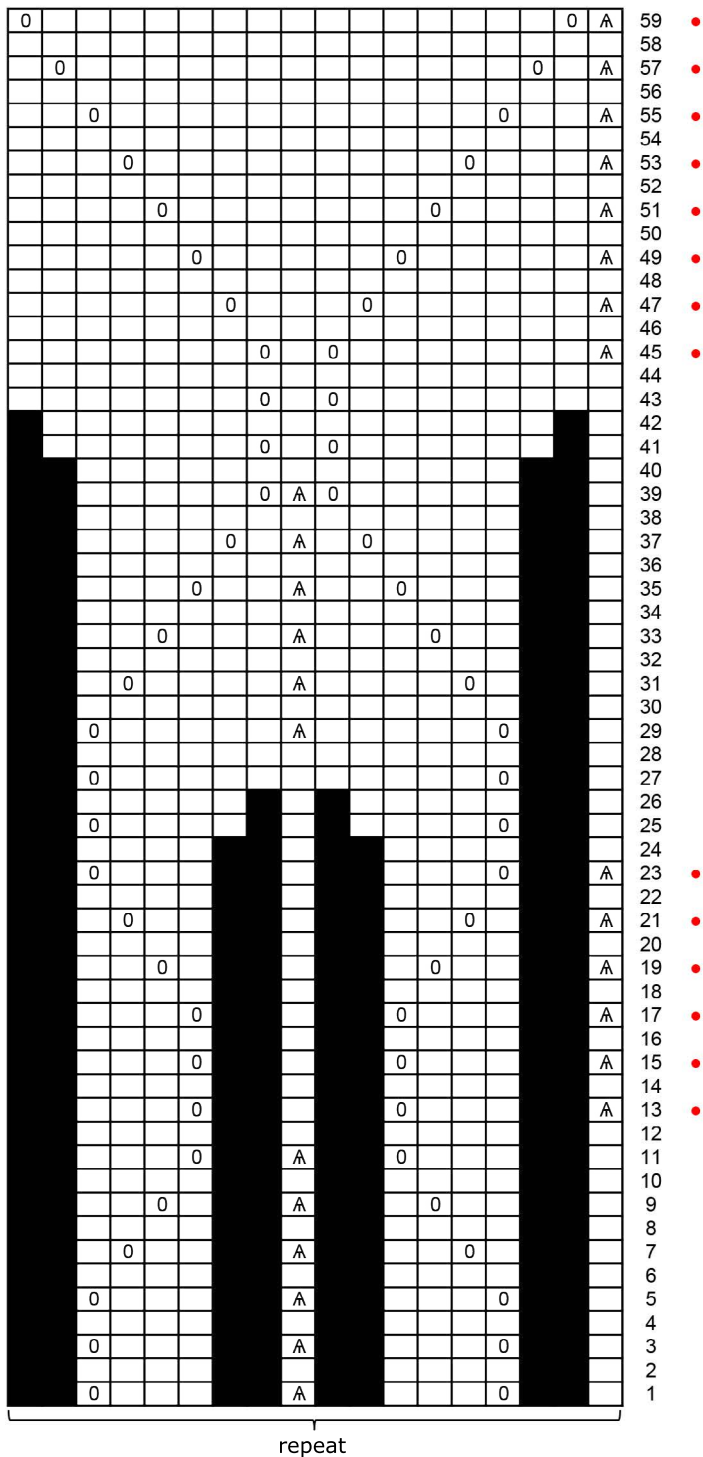
When the 12th row of the chart has been worked, the marker is moved one stitch to the right. This way the next round can begin with knitting 3 sts together. Repeat this procedure on all the rows marked with red.

Work all 59 rows of the chart. To lengthen the cowl, repeat row 58 and 59 to the desired length.

Purl 1 round from the RS. Bind off knit-wise loosely.

Rinse the work, put it through a (dry) spin cycle in the washing machine and then leave it on a flat surface to dry.





- knit on the RS, purl on the WS
- 0 yarn over
- A slip 2 sts as if knitting them together, k1, pass slipped sts over
- no stitch
- move marker 1 st to the right