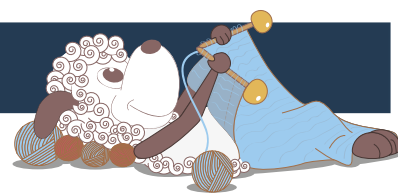


Malin - a bohus inspired hat



Design: Rachel Søgaard

This lovely hat is designed using the same colorwork principles as the original Bohus sweaters, where purl stitches in the colorwork add to the depth and nuance of the design.

1st English edition - August 2016 © Filcolana A/S
English translation: Signe Strømgaard

Materials

Peruvian Highland Wool by Filcolana: 50 g in each of 4 different colors (see colornumbers in the chart on the next page. The hat to the right has color 814 as the mail color, the hat below color 806. Please note: The main color is the top color for the charts)
3,5 and 5 mm circular needle, 40 cm long
5 mm double-pointed needles

Sizes

S (M) L

Measurements

Fits head circumference: approx. 52-54 (55-57) 58-60 cm
Height: 21 cm

Gauge

21 sts in charted pattern on 5 mm needles = 10 cm

Directions for knitting

The hat is worked from the top down, the pattern is worked from the chart.



Special abbreviations

M1: Make 1. Increase one stitch by lifting the chain between sts onto the left needle and knitting it through the back loop.

Hat

Cast on 80 (88) 96 sts on a 3,5 mm circular needle with the main color. Join in the round and work ribbing (k2, p2) for 4 cm.

Change to a 5 mm circular needle and work the following increases on the next round: *Knit 10 (11) 12) sts, M1*. Repeat from * to * to end of round. There are 88 (96) 104 sts on the needle.

Work pattern from chart.

When all rows of chart have been worked, continue in the main colour:

Round 1: *Knit 9 (10) 11 sts, k2tog*. Repeat from * to * to end of round.

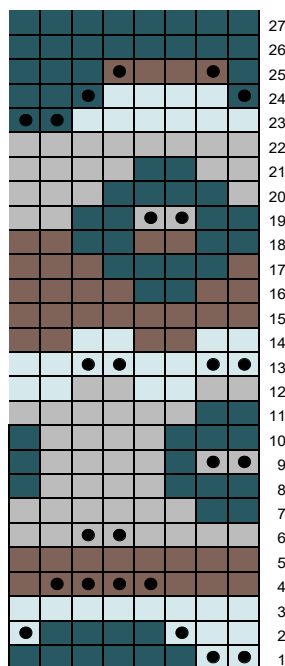
Round 2: *Knit 8 (9) 10 sts, k2tog*. Repeat from * to * to end of round.

Continue in this way, decreasing 8 sts every round, each time with one less stitch between decreases until there are 8 sts left on the needle. Break the yarn and pull the end through the remaining sts.

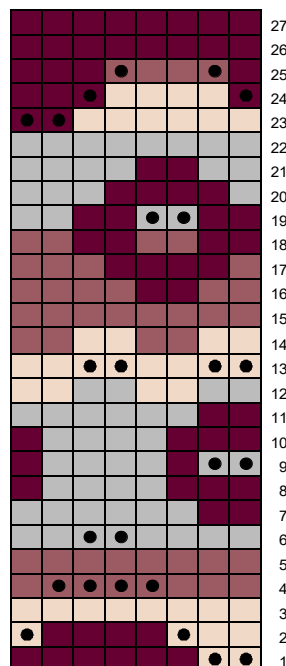
Weave in all ends. Rinse the hat, put it through a (dry) spin cycle and lay it on a flat surface to dry.

Make a pom-pom, approx 4 cm in diameter, and sew it to the top of the hat.

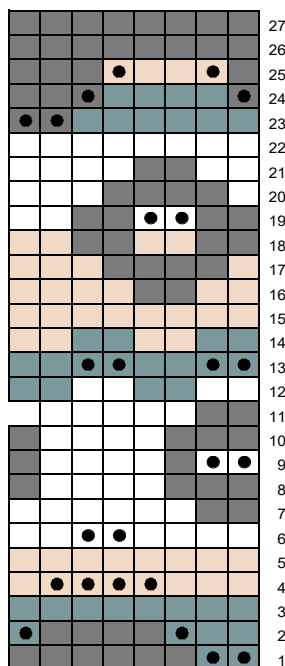
Charts



- color 814
- color 281
- color 816
- color 954
- purl stitch



- color 806
- color 334
- color 805
- color 954
- purl stitch



- color 219
- color 812
- color 334
- color 977
- purl stitch

