

filcolana

OBSESSED WITH QUALITY YARN SINCE 1952



Design: Sanne Bjerregaard
English translation: June Thomsen

Lille Myr

1st edition - January 2022 © filcolana
#FilcolanaLilleMyr

The pattern for Lille Myr is specifically designed for Red Cross's knitting groups, which are knitting for the project "A good start in life". In the project Red Cross volunteers support mothers-to-be and new parents in vulnerable life situations by installing a calm, safe, and stimulating everyday life for the little child and assisting the parent in finding peace in the parenting role.

As children have always been welcome in the circus, we have also found a place for the design in our circus collection.

MEASUREMENTS

92 x 98 cm

GAUGE

25 sts and 48 rows in blanket pattern on 3 mm needles
= 10 x 10 cm.

The knitting sample is measured after washing and blocking, please note that the pattern structure will unfold quite a bit after washing.

Needle sizes are for guidance only.

If you have more sts on 10 cm, change to a larger needle. If you have fewer sts on 10 cm, change to smaller needles.

MATERIALS

Yarn from Filcolana
350 g Arwetta in 977 (Marzipan)

Circular needles 3 mm, 80-100 cm.

2 stitch markers



Technical

SPECIAL ABBREVIATIONS

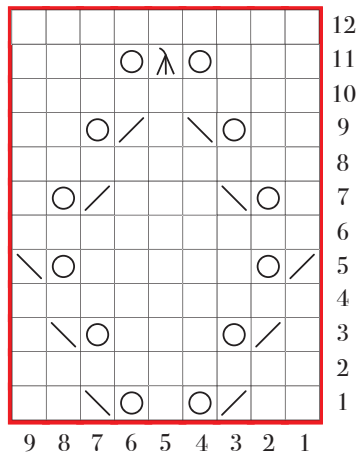
M1PL





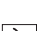
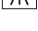
Left slanted increase as seen on right side.

With the left needle pick up the strand between 2 sts from front to back. Purl through the back loop.

CHART

Read the chart from right to left on right side rows and from left to right on wrong side rows.



-  Yarn over
-  Knit on right side, purl on wrong side
-  Knit 2 sts together
-  Slip, slip, knit
-  Slip st purlwise with yarn behind work, knit 2 sts together, pass the slipped st over
-  Pattern repeat

Workflow

Lille Myr is worked in one piece. It's a good idea to knit it on a long circular needle, to avoid too much load on arms and shoulders.

Begin with lower rib, to adjust gauge before eyelet pattern is worked, last row in rib is a decrease row.

Then eyelet pattern is worked, ending with an increase row before working the upper rib.

Rib pattern at both sides are worked at same time as eyelet pattern.





Pattern

LOWER RIB

With 3 mm circular needles cast on 271 sts.
Work is knitted back and forth on the circular needles.

1st row (WS): k1, *p1, k1*, repeat from * to * to last 2 sts, p1, slip last st with yarn in front.

2nd row: k1, *k1, p1*, repeat from * to * to last 2 sts, k1, slip last st with yarn in front.

Repeat these 2 rows, until the ribbing measures 4 cm, finish with a right side row.

Next row (WS) (decrease row): Knit 15 sts ribbing, place stitch marker, p11, p2tog, *p7, p2tog*, repeat from * to * to the last 36 sts, p8, p2tog, p11, place stitch marker, knit the remaining 15 sts in rib = 246 sts.

BLANKET

The sts are now divided into sections.
Continue knitting rib over the 15 sts in each side, while the 216 sts in the middle are knitted as the chart indicates.

Knit as follows:

Next row (RS): Knit rib over 15 sts, repeat the 9 sts of the chart to the last 15 sts, knit rib over remaining sts.

Continue like this and repeat the 12 rows of the chart, until the blanket measures 94 cm, finish with the 11th row of the chart, which is a right side row.

Next row (WS) (increase row): Knit rib over 15 sts, *M1PL, p9*, repeat from * to * to the last 15 sts, M1PL, knit rib over remaining sts = 271 sts.

UPPER RIB

Next row (RS): k1, *k1, p1*, repeat from * to * to last 2 sts, k1, slip last st with yarn in front.

Next row: k1, *p1, k1*, repeat from * to * to last 2 sts, p1, slip last st with yarn in front.

Repeat the last 2 rows until the ribbing measures 4 cm, last row is a wrong side row.

Bind off in rib on next needle.

FINISHING

Weave in all loose ends and wash the blanket according to washing instructions on the label.
Lay blanket flat to dry.

