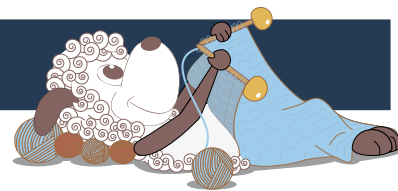


Glimma - a slip stitch baby blanket



Design: Sanne Bjerregaard

Glimma is a lovely baby or pram blanket worked in a slip stitch pattern, which means you only have to work with one color at a time.

1st English edition - January 2015 © Filcolana A/S
English translation: Signe Strømgaard

Materials

Peruvian Highland Wool by Filcolana

150 g in color A: Dark - 270 (Midnight Blue)

100 g in color B: Medium - 228 (Smoke Blue)

100 g in color C: Light - 281 (Rime Frost)

7 mm circular needle, 80 cm long.

5 mm circular needle, 100-120 cm long - for the edges

4 stitch markers or loops of scrap yarn - one of which needs to be in a contrasting color from the others.

Measurements

66 x 76 cm

Gauge

18 sts and 27 rows in pattern on a 7 mm needle = 10 cm.

Slip Stitch Pattern

Row 1 (RS): *K3, slip 1 purl-wise with the yarn in back*. Repeat from * to * to the last 3 sts,, k3.

Row 2: *K3, slip 1 purl-wise with the yarn in front*. Repeat from * to * to the last 3 sts, k3.

Row 3: K1, *slip 1 purl-wise with the yarn in back, k3*. Repeat from * to * to the last 2 sts, slip 1 purl-wise with the yarn in back, k1.

Row 4: K1, slip 1 purl-wise with the yarn in front, k3*. Repeat from * to * to the last 2 sts, slip 1 purl-wise with the yarn in front, k1.

Directions for knitting

The blanket is worked in the slip stitch pattern, using 3 colors. Then the stitches for the edge are picked up and knitted all around the blanket, so the entire edge can be worked in the round in 1 piece.

Blanket

Cast on 103 sts on a 7 mm circular needle using color A. Knit 1 row.

Change to color B and work in pattern as described above and in the chart. The pattern is worked with 2 rows in each color (the order being B, C and A) throughout. The color changes are always made on the RS.

Work in pattern until the work measures approx. 66 cm. End on Row 1 of the pattern and with color A.

Final row (WS) with color A: Change to a 5 mm needle and work *k3, p1*. Repeat from * to * to the



last 3 sts, k3.

Bind off using a sewn bind-off to ensure that both ends of the blanket are identical, which is useful when picking up sts for the edge

Sew bind-off (see photo tutorial at the end of the pattern):

Break the yarn so you have a tail approx. 3 times the length of the blanket and sew using a wool needle:

*Hold the blanket with the RS facing you. Insert the needle through the first stitch on the left needle as if to purl, and pull the yarn through the stitch, but leave the stitch on the needle.

Hold the yarn to the front and insert the needle through the third stitch on the left needle as if to knit, so the needle comes out at the back of the work. Pull the yarn through, then let the first stitch fall off the needle*. Repeat from * to * until all the stitches have been sewn and bound off.

Picking up stitches for the edge

Knit a garter ridge on either side of the blanket, so you have the same number of garter ridges on all 4 sides of the blanket.

Using the 5 mm needle and with the RS of the blanket facing you, pick up and knit stitches using color A:

Right side: Starting at the very edge at the bottom corner (meaning in the cast-on edge itself), pick up and knit stitches all along the right side of the blanket by inserting your needle between the first and second stitch of each row, so that the picked up stitches sit right next to the slipped stitch of the pattern. Pick up approx. 96 sts, and make sure that the last stitch is picked up from the bind-off edge. Mark the first and last stitch.

Work back: P1 (the marked stitch), knit to the last stitch, p1 (the marked stitch). Break the yarn and let the sts rest on an extra needle or length of scrap yarn.

Left side: Pick up and knit sts the same way as for the right side, starting at the bind-off edge and ending at the cast-on edge. Mark the first stitch the same as the other 2 sts, and mark the last stitch with the contrastin marker. This marks the beginning of the round.

Work back: P1 (the marked stitch), knit to the last stitch, p1 (the marked stitch). Break the yarn.

Top and bottom: Pick up and knit stitch along the cast-on edge: Insert the needle just under the cast-on itself and pick up and knit 1 stitch for each stitch

of the cast-on, **but** skip every 7th stitch. Continue in this way until you reach the resting sts along the right edge of the blanket.

Knit across the resting sts along the right side, then pick up and knit stitches along the bind-off edge of the blanket the same way as for the cast-on edge. Remember to skip every 7th stitch.

Knit across the resting sts along the left side, ending at the first marker, ie. the contrasting marker which marks the beginning of the round.

Edge

Round 1: *K1, make a yarn over, purl to the marked stitch, make a backward yarn over*. Repeat from * to * to end of round.

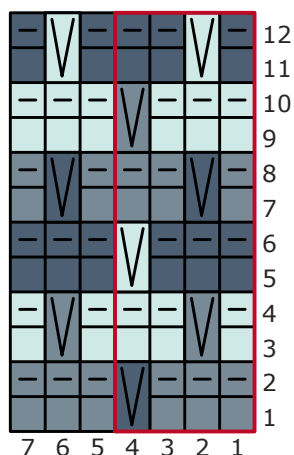
Round 2: *K1, knit the yarn over from the last round, knit to the next yarn over, knit the yarn over from the previous round through the back loop*. Repeat from * to * to end of round.

Repeat these 2 rounds 6 more times. Work Round 1 once more (= a total of 9 garter ridges).

Bind off (but not too tightly) on the next round.

Gently rinse and block the finished blanket.

Chart - slip stitch pattern



color A

color B

color C

knit on the RS and purl on the WS

purl on the RS and knit on the WS

slip the stitch purl-wise with the yarn held in back on the RS, then slip the same stitch purl-wise with the yarn held in front on the WS

pattern repeat



Photo tutorial - sewn bind-off



*Hold the blanket with the RS facing you. Insert the needle through the first stitch on the left needle as if to purl.



Hold the yarn to the front of the work and insert the needle through the third stitch on the left needle as if to knit, so the needle comes out at the back of the work.



Let the first stitch fall off the needle*. Repeat from * to * until all the stitches have been bound off.