

filcolana

OBSESSED WITH QUALITY YARN SINCE 1952



Design: Sanne Fjalland
English translation: June Thomsen

Gardenia

1st edition - August 2022 © filcolana
#FilcolanaGardenia

Gardenia is a classic blouse with an eye-catching crochet decoration, inspired by Billie Holiday's iconic white Gardenia flower, which she often wore in her hair. Gardenia has a feminine, relatively short, and fitted shape and you can continue the feminine style, by wearing the blouse with feminine wide trousers or a tight-fitting skirt. Or you can go in a different direction and style Gardenia with raw jeans and a pair of flat loafers.

SIZES

S (M) L (XL)

MEASUREMENTS

Fits chest sizes: 83-90 (91-98) 99-106 (107-116) cm

Chest: 94 (102) 110 (120) cm

Length (from top of the shoulder): 55 (57) 59 (61) cm

Sleeve length: 45 (45) 45 (45) cm

GAUGE

20 sts and 29 rows in stockinette using double yarn on 4 mm = 10 x 10 cm. Measure gauge after wash.

Needle sizes are for guidance only.

If you have more sts on 10 cm, change to a larger needle. If

you have fewer sts on 10 cm, change to smaller needles.

MATERIALS

Yarn from Filcolana

350 (400) 450 (450) g Saga in col. 977 (Marzipan)

Use 2 strands of Saga held together throughout work.

3.5 mm circular needles, 40 and 80 cm.

4 mm circular needles, 80 cm

3.5 and 4 mm double pointed needles (dpns)

3 mm crocheting hook

Stitch markers

Scrap yarn for Italian cast on



Techniques

SPECIAL ABBREVIATIONS

Sl1 k1 pss0

Slip 1 st knit-wise, knit 1 stitch, and pass the slipped stitch over the knitted stitch.

Selvedges

Purl the selvedge sts on all rows.

M1L (left slanting increase)

From the front, lift the horizontal strand between stitches with the left needle and knit through the back loop (1 st increase).

M1R - Right slanted increase

From the back, lift the horizontal strand between the two stitches with the left needle and knit through the front loop (1 st increase).

Workflow

Work the blouse from the bottom and up, using two strands of Saga throughout work.

Knit the body in the round to armhole where work is divided and back and front finished separately and worked flat.

Knit the sleeves in the round on circular needles or dpns to the armhole, where the sleeve cap is knitted flat.

Set in the sleeves and pick up sts for the neckband.

Work the base for the gardenia flower on the left front and on left sleeve cap, knit according to chart.

The chart shows the purled stitches. Crochet into these purl sts according to the pattern to shape the flower.





Pattern

BODY

With the scrap yarn cast on 95 (103) 111 (121) sts on 3.5 mm circular needles, knit 2 rows flat. Break scrap yarn.

Join Saga to work and purl 1 row. Do not turn work, join round, and continue knitting in the round.

Purl 2 rounds.

Next round: *p1, insert right needle under the lower bar knit with Saga 3 rows down (= 1st row of Saga), knit this st*, repeat from * to * to last st, pick up the last bar and knit it together with the last st = 188 (204) 220 (240) sts.

P1, place a start marker, and continue in rib (k1, p1), until the ribbing measures 6 cm. Gently cut off the scrap yarn.

Change to 4 mm circular needles.

Continue in the round in stockinette (knit all rounds), until work measures 35 (36) 37 (38) cm in total.

On next round bind off for armhole like this: Bind off the first 5 (7) 8 (10) sts, knit 84 (88) 94 (100) sts, bind off the next 10 (14) 16 (20) sts, knit 84 (88) 94 (100) sts, bind off the last 5 (7) 8 (10) sts. Break yarn.

Let the front sts rest, while finishing the back.

BACK

Knit work flat in stockinette (knit on right side, purl on wrong side), all rows start and end with a purled selvedge st.

1st row (WS): Purl all sts.

Next row (decrease row): Selvedge st, k2tog, knit to last 3 sts, sl1 k1 pss0, selvedge st.

Repeat this decrease on every 4th row, twice more.

Now work the decreases on every 2nd row, until you have knitted 7 (8) 9 (10) rows with decreases = 70 (72) 76 (80) sts.

Continue without decreases until the sleeve measures 20 (21) 22 (23) cm, measured from the bottom of the armhole. Finish with a right-side row.

NECK

Next row (wrong side): Purl 22 (23) 24 (26) sts, bind off the next 26 (26) 28 (28) sts for the neck, purl remaining sts.

The sides of the neck are finished separately, while at the same time binding off for the sloping shoulders.

Note! When binding off sts for both the neck and the sloping shoulders, do not work the 1st st of the bind off but slip is purl-wise. This will make the transitions at the bind offs as even as possible.

Right shoulder

At the beginning of every right-side row bind off – from the side of the armhole - 5 sts 1 (0) 0 (0) time, 6 sts 2 (3) 2 (0) times and 7 sts 0 (0) 1 (3) time(s), **AT THE SAME TIME** bind off at the beginning of the next 2 wrong side rows to shape the neckline; bind off 3 sts once and 2 sts once.





Left shoulder

Join yarn to right side of the resting sts of left shoulder and bind off as on right shoulder, only binding off for the neckline at beginning of the following 2 right side rows and for the armhole at beginning of every wrong side row.

FRONT

Knit as the back, until you have worked all 7 (8) 9 (10) decreases = 70 (72) 76 (80) sts.

Finish with a right-side row.

Do not turn work but place a marker after the first 16 sts on your needles (as seen from the right side).

Work the “base” of the flower, i.e., the purl sts that you work double crochets into later, as indicated in the chart, over the 16 outer sts of the left shoulder.

Read the chart from bottom and up, from left to right on wrong side needles, and from left to right, on right side needles. Knit the remaining sts on your needles in stockinette.

Next row (WS): Purl to last 16 sts, knit these as indicated in the 1st row of the chart.

Next row: Knit the first 16 sets as indicated in the 2nd row of the chart, knit remaining sts.

Continue like this, until the armhole measures 12 (13) 14 (15) cm, measured vertically from the bottom of the armhole. Finish with a right-side row.

Next row (WS): Purl 26 (27) 28 (30) sts, bind off the next 18 (18) 20 (20) sts, purl to the last 16 sts, knit these as indicated in the chart.

Work is now divided into neck and shoulders and each side is finished separately.

First, finish left side (the side where you knit according to chart).

Left side

Bind off for the neckline at beginning of every wrong side row; 3 sts once, 2 sts once, and 1 st 4 times.

Note! As previously, slip the first st at beginning of every bind off.

Continue in stockinette and follow chart over the outer 16 sts, until armhole measures 20 (21) 22 (23) cm. Finish with a wrong side row.

Bind off for the sloping shoulders at beginning of every right-side row; 5 sts 1 (0) 0 (0) time(s), 6 sts 2 (3) 2 (0) times, and 7 sts 0 (0) 1 (3) time(s).

Right side

Join yarn to right side of the resting sts and bind off for the neckline at beginning of every right-side row; 3 sts once, 2 sts, once, and 1 st 4 times.

Note! As previously, slip the first st at beginning of every bind off.

Now, continue without bind offs, until work measures 20 (21) 22 (23) cm. Finish with a right-side row.

Bind off for the sloping shoulders at beginning of every right-side row; 5 sts 1 (0) 0 (0) time(s), 6 sts 2 (3) 2 (0) times, and 7 sts 0 (0) 1 (3) time(s).

LEFT SLEEVE

With 3.5 mm and the scrap yarn cast on 23 (25) 25 (27) sts and knit 2 rows flat.

Break the scrap yarn.

Join Saga to work and purl 1 row. Do not turn work but join round on dpns and continue in the round.

Purl 2 rounds.

Next round: *p1, insert right needle under the lower bar knit with Saga 3 rows down (= 1st row of Saga), knit this st*, repeat from * to * to last st, pick up the last bar and knit it together with the last st = 44 (48) 48 (52) sts.

P1, place start marker and continue working rib (k1, p1) in the round, until ribbing measures 12 cm. Gently cut off the scrap yarn.

Change to 4 mm needles.

Continue in stockinette in the round until the stockinette measures 2 (2) 1 (3) cm.

Next round (increase round): K1, M1L, knit to last st, M1R, k1.

Repeat this increase round on every 6th (6th) 6th (5th) round, 14 (14) 16 (17) times in total = 72 (76) 80 (86) sts.

Continue without increases, until sleeve measures 45 cm.



Next round: Bind off the first 5 (7) 8 (10) sts, knit the next 62 (62) 64 (66) sts, bind off the last 5 (7) 8 (10) sts. Break yarn.

Sleeve cap

Now work the remaining sts flat, while at the same time making decreases for the sleeve cap.

Join yarn to wrong side of work and purl all sts.

Next row (RS/decrease row): Purl selvedge st, k2tog, knit to last 3 sts, sl1 k1 psso, purl selvedge st.

Repeat this decrease row on every 4th row, until you have worked 3 (4) 4 (4) decrease rows.

Now, repeat the decrease row on every 2nd row, until you have worked 7 (7) 8 (9) decrease rows. Finish with a wrong side row.

Knit the rest of the sleeve cap according to chart, and **AT THE SAME TIME** continue the decreases on every right-side row another 8 times.

Now bind off 2 sts at beginning of every row 3 times in each side and 3 sts one time in each side. Finish with a wrong side row.

Bind off the remaining 14 sts.

RIGHT SLEEVE

Knit as left sleeve only without the chart, work entire sleeve in stockinette.

FINISHING

Sew the shoulder seams together.

Insert sleeves into the armholes and sew like this; sew left sleeve so the lower part of the motif on the left side of the front is adjacent to the lower part of the motif on the left sleeve.

NECKLINE

With 3.5 mm circular needles, 40 cm, and yarn held double, pick up sts along the right side of the neckline like this:

Start at right shoulder seam and pick up 38 (38) 40 (40) sts along the neck, 24 sts down to the left side of the neck, pick up 18 (18) 20 (20) sts over the bound off sts in the middle of the front, and 24 sts along the right side of the neck = 104 (104) 108 (108) sts in total.

Join round and knit rib (k1, p1) over 7 (7) 8 (8) rounds.

Next round: *K1, slip the purl st with yarn in front*, repeat from * to * over entire round.

Next round: *Slip the knit st with yarn behind work, p1*, repeat from * to * over entire round.



Bind off using Italian bind off technique, like this:

Measure a tail approx. 4 times the length of the rib circumference. Thread tail onto a tapestry needle.

Note! When you bind off the front sts, where the neckline has the most rounded shape, bind off a bit tighter, so the neckband shapes nicely on the neck.

1. Insert tapestry needle into the first 2 sts on left needle as if to purl, pull the yarn through.
2. From behind work insert needle between 2nd and 3rd st. Pull needle and yarn to front of work.
3. Insert tapestry needle through the 3rd st, from front and out on the back.



4. Insert tapestry needle from front into the first 2 sts as if to knit them together, slip both sts off needle.

5. From the front insert tapestry needle - from right to left - into the front leg of the 2nd st (knit st), pull yarn through.

6. Insert tapestry needle into 1st st as if to purl, slip st off needle.

Repeat steps 2-6 until you have 1 purl st left on your left needle.

Finish:

7. From right side insert needle, from right to left, into the first bound off st, pull yarn through.

8. Knit as step 6.

All sts are bound off.

Weave in ends thoroughly.

CROCHETED DECORATION

Use a 3 mm crochet hook and crochet using 2 strands held together.

Since the purl sts in the motif are placed partly on the front and partly on the sleeve, and the lines are broken, the motif cannot be crocheted in one workflow. It will be necessary to break the yarn at the end of every purl stitch line and weave in the ends. You can easily weave in the ends invisible if you weave the end through the 1st double crochet row.

Starting at the marked first st as shown in chart, crochet

from right to left, 1 double crochet into each purl st, like this:

Insert crochet hook from bottom up through the purled bar, pick up yarn, pull it through and work a double crochet. See photo.

Once you have crocheted 1st time in the purl stitch line, turn work, and work double crochet back in the same row, while working 2 double crochets down through each double crochet in the previous row.



FINISHING

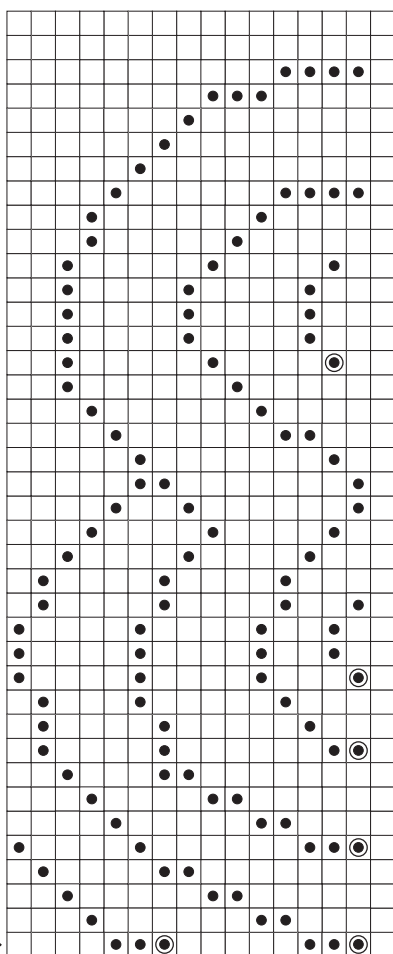
Weave in all ends.

Wash blouse according to washing instructions on the labels and lay it flat to dry on a towel.





Chart - Left Shoulder



Wrong side →

← Right side

CHART

Read the charts from right to left on right side rows,
and from left to right on wrong side rows.

□ Knit on right side, purl on wrong side

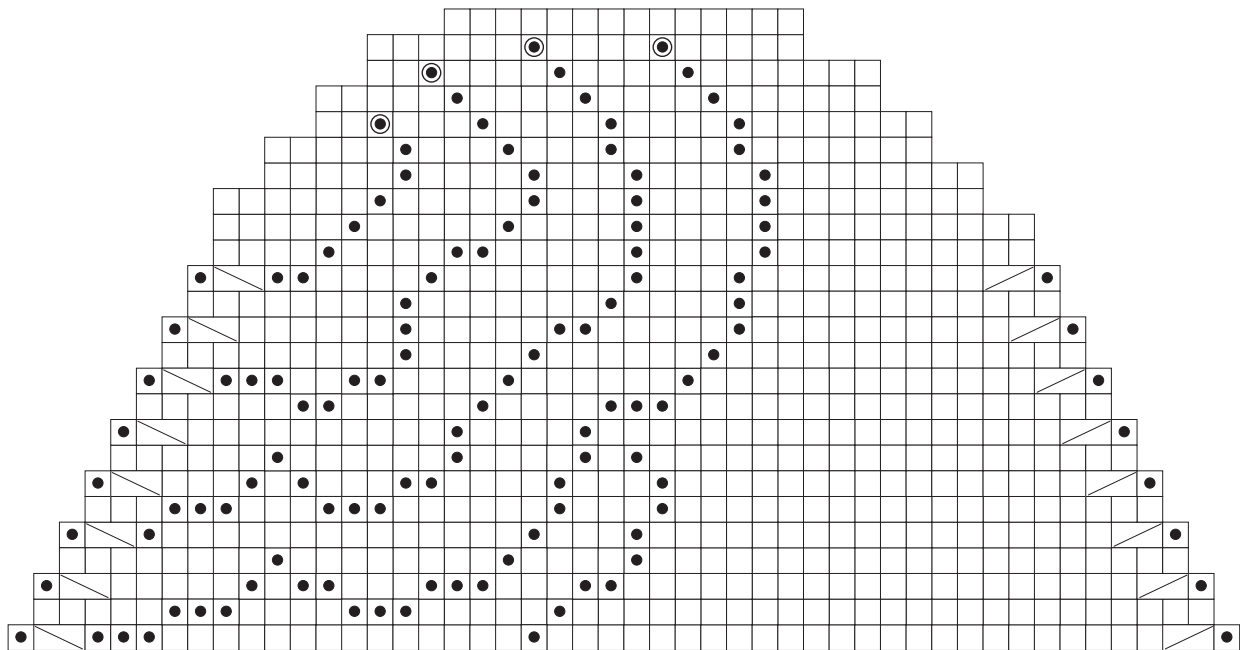
● Purl on right side, knit on wrong side

⊙ Purl on right side, knit on wrong side //
Start in this stitch when working crochet sts.

▤ Slip 1 st purl-wise, knit st, pass the slipped st over

▥ Knit 2 sts together

Chart - Left Sleeve



← Right side