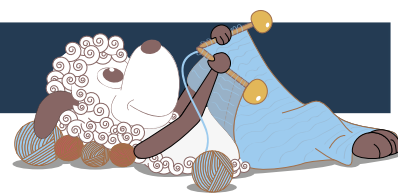


Cubes - a crocheted cowl



Design: Stine Gudmand-Høyer

Crocheted in warm and luxurious alpaca or cuddly naturgarn. The cowl is crocheted in a openwork pattern of offset archs. The openwork pattern makes the cowl very soft. The edging makes sure the cowl keeps its shape. The cowl is crocheted as a long rectangle and joined invisibly to a tube by crocheting the short ends together.

1st English edition - March, 2014 © Filcolana A/S
English translation: Sidsel Sangild

Materials

Crochet hook: 4 mm

Version A in single color:

150-200 g of Indiecita by Filcolana in color 260 (c1)

Version B in two colors:

Aqua/aquadis: 100 g of Indiecita by Filcolana in color 197 (c1) and 100 g of Indiecita in color 808 (c2).

Lavender/purple: 100 g of Indiecita by Filcolana in color 230 (c1) and 100 g of Indiecita in color 286 (c2).

Version C in three colors:

Red/orange/light purple: 100 g Indiecita by Filcolana in color 810 (c1), 50 g Indiecita in color 237 (c2) and 50 g of Indiecita in color 286 (c3).

The cowl can also be made in Naturgarn by Filcolana. See page 3.

Finished measurements

Approx. 23 cm wide and 160 cm in circumference.

Gauge

The first three rows measures approx. 23 x 7 cm.

Notes

The cowl is crocheted holding two strands of the yarn together. The pattern uses UK terms.



Indiecita by Filcolana in color 197 and 808



Indiecita by Filcolana in color 230 and 286



Naturgarn by Filcolana in color 224, see page 3



Indiecita by Filcolana in color 260

Pattern

The pattern is a mesh of offset arches. To get a straight edge the rows alternate between 14 and 15 arches on each row. One arch is made from 3 ch and a triple treble (trtr). On the rows with 15 arches the first and last arch are a bit smaller than the rest.

Version A

Made using a single color throughout.

Version B

Made using two colors (color 1 and color 2). There are 8 stripes using one color yarn and two colors of yarn respectively. The single color stripe is made holding two threads of the same colors yarn together (e.g. color 1 + 1) the two-colored stripe is made holding the two different colors together (color 1 + 2). See chart on next page.

Version C

Made using three colors of yarn (color 1, 2 and 3). There are 8 stripes using one color yarn and two colors of yarn respectively. The single color stripe is made holding two threads of the same colors yarn together (e.g. color 1 + 1 or color 2+2) the two-colored stripe is made holding the two different colors together (e.g color 1 + 2 or color 2+3). See chart on next page.

Abbreviations (UK terminology)

ch – chain

ch sp – chain space

dc – double crochet

tr tr – triple treble. Yarn over three times. Crochet in the chain space from previous row. Yarn over and pull the yarn through. Now 5 loops on the hook. *Yarn over and pull yarn through the first 2 loops on the hook*, repeat from * to * 4 times.

Method

Follow chart 1 or use the method described here.

Ch 57. Place a stitch marker in ch no: 1, 5, 9, 13, 17, 21, 25, 29, 33, 37, 41, 45, 49 and 53.

Row 1: 1 dc in 2. ch from hook, ch 4, 1 dc in 2. ch from hook. * Ch 3, 1 trtr in next marked ch*.

Repeat from * to * 13 times.

Row 2: Ch 4, 1 dc in 2. ch from hook. Ch 1, 1 trtr in first ch sp, * ch 3, 1 trtr in next ch-sp *. Repeat from * to * a further 12 times, ending last repeat with ch 2, 1 trtr in top of turning chain from previous row.

Row 3: Ch 4, 1 dc in 2. ch from hook. Ch 3, 1 trtr in

Chart for the color changes The shawl is divided into 8 sections. 9 rows = 1 section. For version B and C the colors change after every section.								
	Section 1	Section 2	Section 3	Section 4	Section 5	Section 6	Section 7	Section 8
Version A	c1							
Version B	c1+c1	c1+c2	c1+c1	c1+c2	c2+c2	c1+c2	c2+c2	c1+c2
Version C	c1+c1	c1+c2	c1+c1	c1+c2	c2+c2	c2+c3	c3+c3	c1+c3



next ch sp, * ch 3, 1 trtr
in next ch sp *. Repeat from * to * a further 9 times,
ending last repeat with ch 3, 1 trtr in top of turning
chain from previous row.
Repeat row 2 and 3 until a total of 70 rows.

Color change (version 2 and 3) after every 9th row. 9
rows form one stripe. The cowl has 8 stripes in total.
Change colors as shown in chart.

Joining: Join as shown in chart 2 or use the method
described here.

Place the short sides of the rectangle next to each
other. The beginning end (A-end) has 14 arches and
the last row (B-end) has 15 arches.

Ch 4.

Trtr in the corner of A-end, Ch 1, trtr around the first
arch in A-end. Ch 2, trtr around 2. arch of B-end. *
ch 1, 1 trtr around next arch of A-end. Ch 2, 1 trtr
around next arch of B-end*, repeat from * to * 12
times. Ch 1, 1 trtr around the last arch of A-end, ch
2, 1 trtr in the corner of A-end, ch 4, 1 sl st in corner
of B-end. Fasten off and weave in yarn ends.

Variation: Cubes in Naturgarn

Materials

170 g of Naturgarn by Filcolana. The pictures show
a version made in turquoise - color 224 and apple
green - color 275 respectively.
7 mm hook

Finished measurements

Approx. 23 x 160 cm.

Hæklefasthed

The three first rows measures approx. 23 x 12 cm.
Choose a larger hook, if the textile feels too solid.
Choose a smaller hook, if it feels too loose.

Method

Follow the pattern above, but only chain 29.
Place a marker in ch: 1, 5, 9, 13, 17, 21 og 25.
There will of course be fewer arches. On row 2 there
are 8 arches and on row 3 there are 7 arches.
Repeat row 2 and 3, until a total of 41 rows.

Chart Key

- ch - chain
- × dc - double crochet
- ⚡ trtr - triple treble

Chart 1:

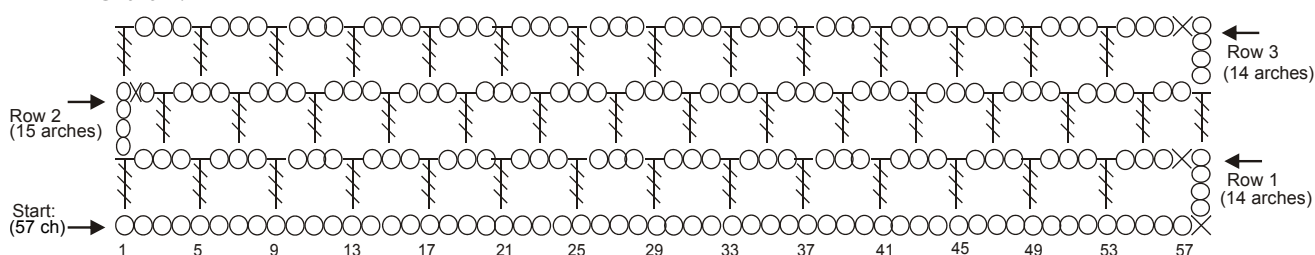


Chart 2:

