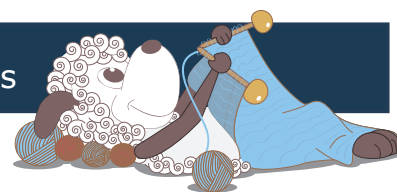


Capreolus - a lovely sweater for the littlest ones



Design: Signe Strømgaard

Capreolus is worked seamlessly to eliminate all the finishing work, and even though it is a simple knit, all of the lovely details make it fun to knit and the finished garment that little bit more special.

6th English edition - September 2022 © Filcolana A/S

Materials

100 (100) 150 (150) 200 g of Pernilla by Filcolana in color 812 (Granit melange)
4 mm circular needle, 60 cm long
4 mm double-pointed needles
3½ mm straight, circular needle or double-pointed needle(s)
8 stitch markers or loops of yarn (4 in 1 color and 4 in a different color for the raglan)
5 (5) 5 (6) 6 buttons (approx. 2 cm in diameter)

Sizes

62 cl/3 months (68 cl/6 months) 80 cl/1 year (92 cl/2 years) 104 cl/4 years

Measurements

Body, chest: 46 (48) 50 (54) 56 cm
Sweater, chest: 54 (56) 59 (63) 65 cm
Sleeve length: 16 (17) 19 (22) 27 cm
Total length: 25 (27) 29 (32) 36 cm

Gauge

23 sts and 32 rows in stockinette stitch on 4 mm needles = 10 x 10 cm.

Special abbreviations

M1: Make 1. Increase one stitch by lifting the chain between sts onto the left needle and knitting it through the back loop.



Special techniques

Vertical buttonhole

Row 1 (RS): Work as the pattern dictates to where the buttonhole is placed, yarn over twice, k2tog, then finish row as pattern dictates.

Row 2 (WS): Work to the double yarn over, purl the first yarn over, then let the second yarn over drop, finish row as pattern dictates.

Row 3 (RS): Work as the pattern dictates to the buttonhole, knit 1 stitch through the buttonhole, then let the next stitch drop off the needle, finish row as pattern dictates.

Casting on new stitches mid row

Loop the working yarn around one finger, make sure the end coming from the ball of yarn is turning away from you and toward the stitches on the needle. Place the new stitch on the needle

Directions for knitting

The cardigan is worked seamlessly from the bottom up, and the buttonholes are worked consecutively with the cardigan.

First the body is worked back and forth to the armholes. Then the sleeves are knit on double-pointed needles (or one or more circular needles if preferred). Finally sleeves and body are joined on the circular needle, and the yoke is worked.

The different decrease rows on the yoke creates a soft, rounded saddle shoulder. The yoke is finished with a garter neck edge.

Body

Cast on 128 (132) 138 (146) 150 sts on a 4 mm circular needle and work back and forth.



Row 1 (WS): Knit to end of row, cast on 2 new stitches.

Row 2 (RS): Sl1, knit to end of row, cast on 2 new stitches.

Row 3: Sl1, knit to end of row, cast on 1 new stitch.

Row 4: Sl1, knit to end of row, cast on 1 new stitch.

Work row 3 and 4 a total of 3 times.

There are now 138 (142) 148 (156) 160 sts on the needle.

Knit 7 (7) 7 (6) 4 rows.

Slip the first stitch on every row with the yarn held in back (sl1).

Begin the first buttonhole on the next row (RS): Knit until there are 6 (6) 7 (7) 7 sts left on the needle, work row 1 of the vertical buttonhole as described at the beginning of the pattern.

Begin a new buttonhole every 16th (18th) 20th (18th) 20th row until a total of 5 (5) 5 (6) 6 buttonholes have been worked.

Work in garter stitch (knit all rows) until a total of 9 (9) 11 (11) 11 garter ridges ie. 17 (17) 21 (21) 21 knit rows have been worked. The last row is a WS row.

Row 1 (RS): Sl1, knit 9 (9) 11 (11) 11, place a marker, knit 54 (56) 56 (60) 62, place a marker, knit 10 (10) 12 (12) 12, place a marker, knit until there are 10 (10) 12 (12) 12 sts left on the needle, place a marker, knit 10 (10) 12 (12) 12.

Row 2 (WS): Sl1, [knit to marker, purl to marker] 2 times, knit to end of row.

Row 3 (RS): Sl1, knit to end of row.

Work 11 (11) 13 (13) 17 rows as established in row 2 and 3.

Next row (RS): Sl1, [knit to marker, k4, k2tog, knit to 6 sts before marker, ssk, k4] 2 times, knit to end of row.

Work these decreases every RS row a total of 3 times.

There are now 126 (130) 136 (142) 148 sts on the needle.

Work straight in established pattern until the work measures 14,5 (16) 17 (19) 22 cm. End on a RS row.

Next row: Sl1, knit to marker, purl 21 (22) 22 (23) 24, bind off 6 (6) 6 (8) 8 sts, purl to marker, knit to marker, purl 21 (22) 22 (23) 24, bin off 6 (6) 6 (8) 8 sts, purl to marker, knit to end of row.

Let the body rest while the sleeves are knit.

Sleeves

Cast on 36 (38) 40 (42) 46 sts on 3½ mm double-pointed needle and fork back and forth.

Knit 9 (9) 11 (11) 11 garter ridges, ie. 17 (17) 21 (21) 21 knit rows. The first row is a WS row.

Change to 4 mm double-pointed needles and knit 1 row.

Join in the round and place a marker at the beginning of the round.

Knit 12 (12) 12 (16) 20 rounds.

Increase round: K1, M1, knit to the last stitch of the round, M1, k1.

Work an increase round every 12th (12th) 12th (16th) 20th round a total of 3 times.

There are now 42 (44) 46 (48) 52 sts on the needle. Knit straight until the sleeves measures 16 (17) 19 (22) 27 cm.

Next row: Knit to the last 3 (3) 3 (4) 4 sts of the round, bind off the next 6 (6) 6 (8) 8 sts.

Work the second the sleeve the same way as the first.

Yoke

Join body and sleeves on the circular needle while placing the following raglan markers:

Knit across right front to 2 sts before the bound off sts, k2tog, place a raglan marker, knit the first sleeve onto the circular needle - start with k1, ssk, knit to the last 3 sts on the sleeve, k2tog, k1, place a raglan marker, knit across back - start with ssk, knit to the last 2 sts, k2tog, place a raglan marker, knit the second sleeve onto the circular needle - start with k1, ssk, knit to the last 3 sts on the sleeve, k2tog, k1, place a raglan marker, knit across left front - start with ssk, knit to end of row.

There are now 178 (186) 196 (200) 212 sts on the needle.

Note! Remember to work buttonholes.

Size 62 cl/3 months and (68 cl/6 months)

Row 1 (WS): Sl1, knit to marker, purl to 2 sts before raglan marker, p2tog, p1, p2tog, purl to 3 sts before raglan marker, p2tog, p1, p2tog, purl to marker, knit to marker, purl to 2 sts before raglan marker, p2tog, p1, p2tog, purl to 2 sts before raglan marker, p2tog, p1, p2tog, purl to marker, knit to end of row.

There are now 170 (178) - (-) - sts on the needle.

Size 80 cl/1 year (92 cl/2 years) and 104 cl/4 years

Row 1 (WS): Sl1, knit the knit sts and purl the purl sts to end of row.

There are now - (-) 196 (200) 212 sts on the needle.

Sleeve decreases - all sizes

Row 1 (RS): Sl1, [knit to raglan marker, k1, ssk, knit

to 3 sts before the next raglan marker, k2tog, k1] 2 times, knit to end of row.

Row 2 (WS): Sl1, knit the knit sts and purl the purl sts to end of row.

Work row 1 and 2 a total of 9 (9) 11 (11) 12 times.

There are now 134 (142) 152 (156) 164 sts on the needle.

Raglan decreases

Row 3 (RS): Sl1, [knit to 2 sts before the raglan marker, k2tog, k1, ssk, knit to 3 sts before the next raglan marker, k2tog, k1, ssk] 2 times, knit to end of row.

Row 4 (WS): Sl1, knit the knit sts and purl the purl sts to end of row.

There are now 126 (134) 144 (148) 156 sts on the needle.

Short rows

Sl1, knit to 2 sts before the raglan marker, k2tog, knit to the second raglan marker, ssk, turn.

purl to first raglan marker, p2tog, turn.

Knit to second raglan marker, ssk, turn.

Purl to first raglan marker, p2tog, turn.

Knit to second raglan marker, ssk, knit to 2 sts before the third raglan marker, k2tog, knit to the fourth raglan marker ssk, turn.

Purl to third raglan marker, p2tog, turn.

Knit to fourth raglan marker, ssk, turn.

Purl to third raglan marker, p2tog, turn.

Knit to fourth raglan marker, ssk, knit end of row.

Sl1, knit to the third raglan marker, k2tog, knit to second raglan marker, k2tog, knit to end of row.

There are now 112 (120) 130 (134) 142 sts on the needle.

Neck edge

Row 1 (RS): Sl1, knit to end of row while decreasing 14 (16) 20 (21) 24 sts evenly across the row.

There are now 98 (104) 110 (113) 118 sts on the needle.

Knit 3 (3) 5 (5) 5 rows (slipping the first stitch).

Next row (RS): Sl1, knit to end of row while decreasing 14 (16) 20 (21) 24 sts evenly across the row.

There are now 84 (88) 90 (92) 94 sts on the needle.

Knit 2 rows (slipping the first stitch).

Continue:

Row 1: Sl1, k1, pass the first st over the second (1 st decreased), knit to end of row.

Row 2: Sl1, bind off 1 st (same method as on row 1), knit to end of row while decreasing 14 sts evenly across the row.

There are now 68 (72) 74 (76) 78 sts on the needle.

Row 3 - 6: Work as row 1.

Row 7: Sl1, bind off 2 sts (using the same method as on row 1 - only with 2 sts), knit to end of row.

Row 8: Work as row 7.

Row 9: Bind off all 60 (64) 66 (68) 70 sts knit-wise.

Finishing

Sew the holes under the sleeves. Weave in all ends.

Sew in the buttons.